

1953

The National, 1953

National College of Education

Follow this and additional works at: <https://digitalcommons.nl.edu/yearbooks>

Part of the [Higher Education Commons](#)

Recommended Citation

Education, National College of, "The National, 1953" (1953). *Yearbooks*. 45.
<https://digitalcommons.nl.edu/yearbooks/45>

This Book is brought to you for free and open access by the Archives and Special Collections at Digital Commons@NLU. It has been accepted for inclusion in Yearbooks by an authorized administrator of Digital Commons@NLU. For more information, please contact digitalcommons@nl.edu.



Cational

1953





Archives
378, 15412
N277y5
1953
c. 4



National College
of
Education
2840 SHERIDAN ROAD

Our Alma Mater

NATIONAL COLLEGE OF EDUCATION

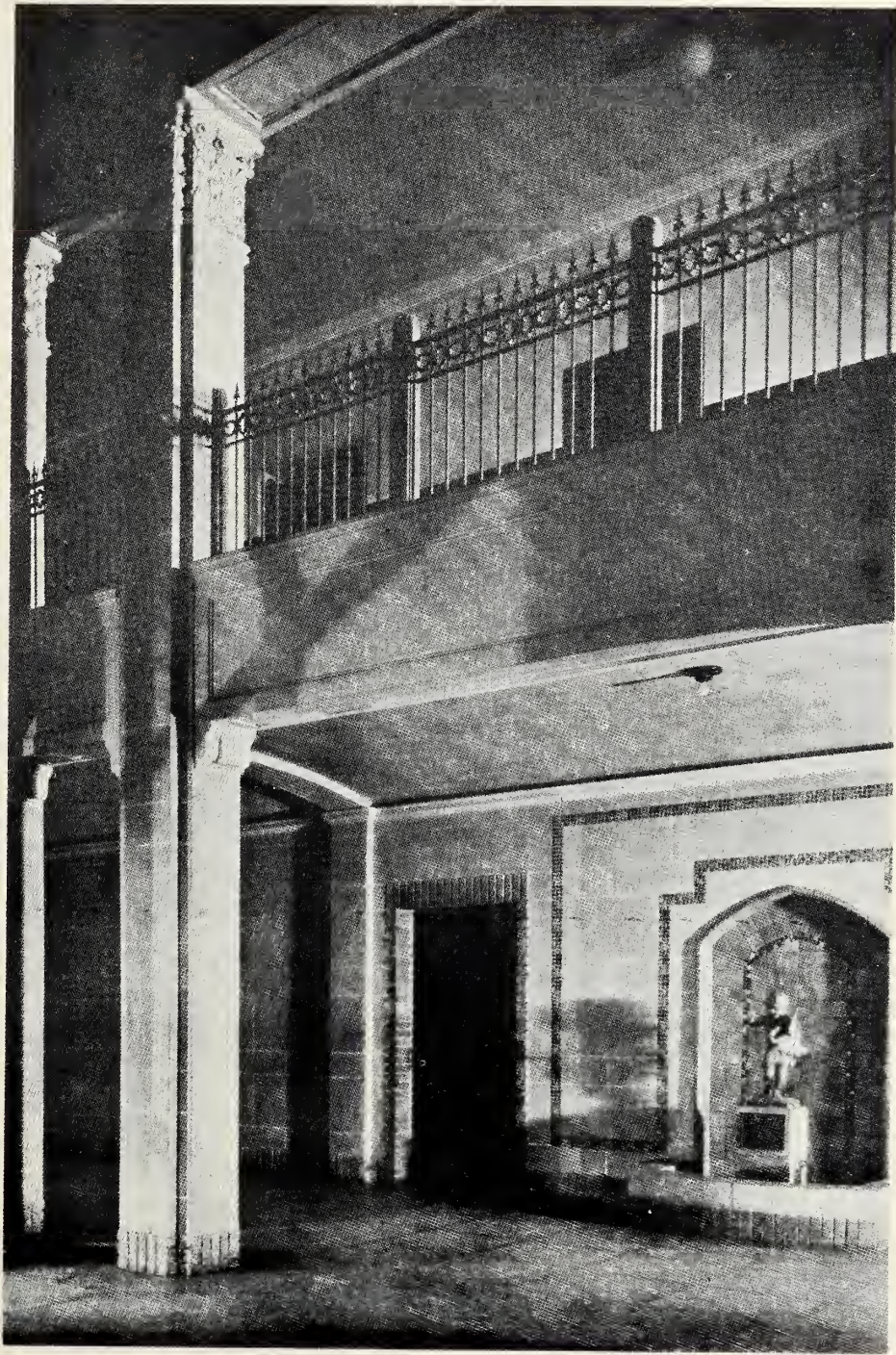
J. FREDA GARDNER '18

Ring out, O voi-ces joy-ful-ly To praise our Al-ma Ma-ter. How
To thee we come, in thee we live, Our dear-est Al-ma Ma-ter. Our

glad-ly do we sing to thee, Our dear-est Al-ma Ma-ter. We
high-est priv-i-lege to give, To thee, our Al-ma Ma-ter. May

praise thy standards broad and free, Long may our flower an em-blem be, Of
we thy daughters ev-er share, With lit-tle child-ren ev-ry-where, The

cour-age high and loy-al-ty, To thee our Al-ma Ma-ter.
joy that we have learned of thee, Our glor-ious Al-ma Ma-ter.



DEDICATION



Mrs. Louise Davis received her Ph.D from Yale University, her M.A. from Columbia University and her Ph.B. from the University of Chicago.

Mrs. Davis' contributions to teaching have been outstanding. When she came to the college in 1928 she began her work in Room 217, testing children in the demonstration school and students in the college. Little did she realize that some day through her tireless efforts we would have such an excellent and outstanding Guidance Center. This building is a monument to her.

She and her husband, Mr. Davis, have worked as a team in interesting many people in the work of the college. Mrs. Davis was instrumental in recently obtaining the Wm. K. Fellows Fund.

Mrs. Davis is an alert, hard working person.

Experts have recognized her as an authority on remedial reading. She is always interested in children who haven't realized fully their possibilities.

We have all benefited from Mrs. Davis' classes. There were many periods in which she would keep us spellbound with real-life emotional problems that she has encountered in her teaching.

Here's to you, Mrs. Davis. In you we have observed a great teacher . . . a teacher who has won our admiration for her wide knowledge and willingness to share with us the experiences she has had. You have helped us to enrich our understanding of little children.

It is with pleasure and pride that the National staff makes this dedication.



Mr. Charles F. Davis received his M.A. and B.A. from McGill University, and his B.D. from Wesleyan Theological Seminary; he has done extensive graduate work at the University of Chicago.

Mr. Davis came to our college in September of 1929. From that time until the present he has been working towards acquainting more people with National College of Education.

He is greatly interested in our library and was the library committee chairman from 1929 to about 1950. During this time he proposed that a portion of the student's college fee be used to enlarge the library. Many of the books which are in the library now have been secured under his management.

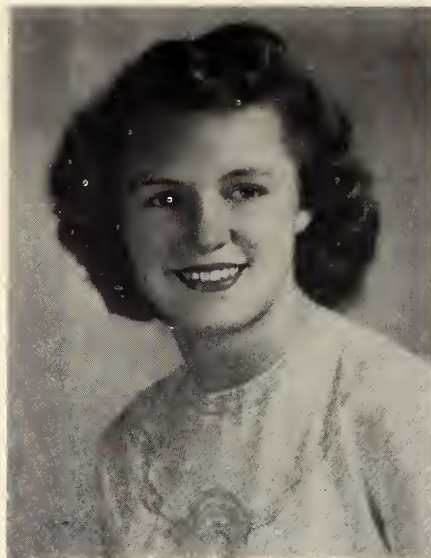
In his friendly, business-like manner he has encouraged many people to contribute to the growth of the college. Also, through his efforts he has brought about the idea of a new dormitory from a mere dream to a future possibility.

His classes are informative as well as informal. The humor and little sayings which are so frequent will be remembered by today's students as well as the alumnae.

Here's to you, Mr. Davis. The students have made a warm place in their hearts for you and it is with gratitude and sincerity that the National staff makes this dedication.



DOROTHY HOLMES
Advertising Editor



NANCY BARNES
Editor



MIMI LAWRENCE
Art Editor



MARY McDOUGLE
Business Manager



MARY ANN GRIFFIN
Assistant Editor
Literary Editor



MARY HIMMELSTEIN
Photography Editor

Yearbook Editors

FACULTY





AGNES L. ADAMS, M.A., Ph.B.
Director of Curriculum



GWENDOLYN M. ADDENBROOKE,
M.A., B.E. Education



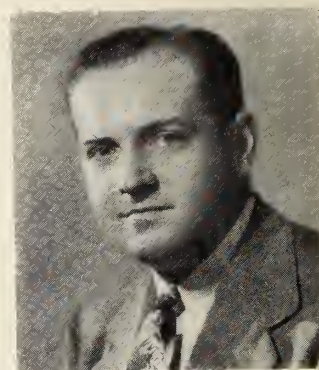
ELIZABETH C. ANTES, M.A., B.E.
Psychology



SARAH BLACK, M.A., B.A.
Education



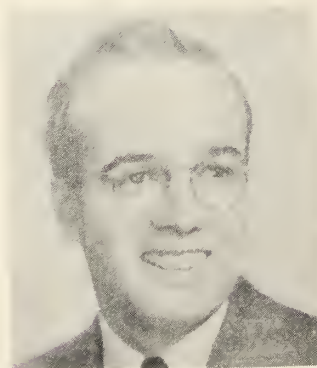
HELEN J. CHALLAND, M.A., B.E.
Science



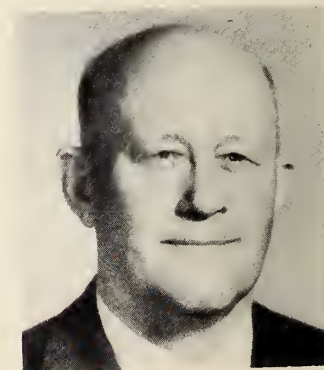
LLOYD W. COUSINS, M.Mus.,
B.Mus.Ed. Music



ROBERT B. CUSHMAN, Ph.D., M.A., B.A.
Social Science



JOHN DAUGHERTY, M.A., Sc.B.
Science



CHARLES F. DAVIS, M.A., B.A., B.D.
Social Science

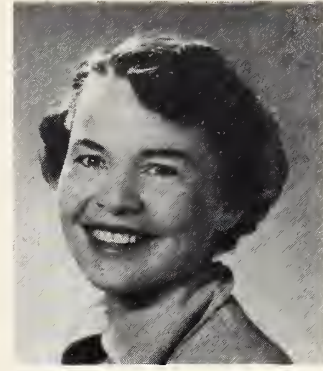
Our Faculty



LOUISE F. DAVIS, Ph.D., M.A. Ph.B.
Psychology



MARY P. DAVIS, M.A., B.A.
Education



JEAN DUFFY, M.A., B.S.
Physical Education



GERTRUDE B. FENNEMA,
M.A., Ph.B. Education



PAULINE GALVARRO, Ph.D.,
M.A., B.A. Dean of Students



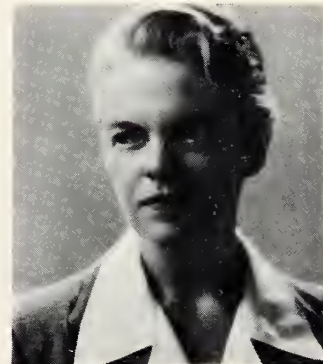
VIRGINIA P. GORMAN, M.A., B.E.
Education



DOREEN HANCK, M.A., B.E.
Psychology



EDWARD HARDY, M.A., B.A.
Physical Education



DADY HEALY, M.A., B.A.
Art

Our Faculty



HARRIET HOWARD, M.A., B.A.
Education



ISABEL HOWARD, B.E.
Education



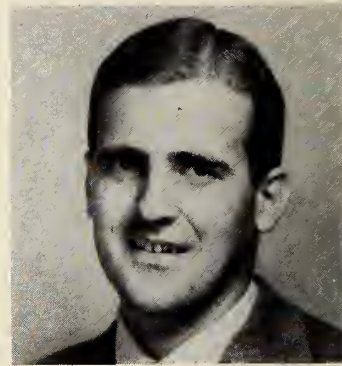
KENNETH E. HOWE, Ed.D., M.A., B.A.
Director of Children's School



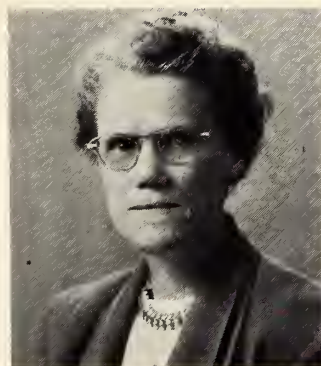
MARJORIE HUNTER, M.Mus., B.Mus.
Music



K. RICHARD JOHNSON, Ph.D., M.S., B.S.
President



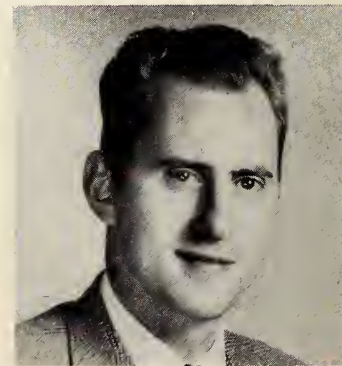
HUGH JONES, M.A.
Director of New Students



MABEL KEARNS, B.E.
Business Manager



BERTHA V. LEIFESTE, Ph.D.,
M.A., B.A. Education



WILLIAM LOVE, M.A.
Education

Our Faculty



LINFORD A. MARQUART, M.A., A.B.
Registrar



NELLIE McCASLIN, M.A., B.A.
English



MARY LOUISE NEUMANN, B.S.
in L.S., B.A. Library



RUTH POWERS, B.S. in L.S., B.A.
Library



SHIRLEY SPEAR, B.E.
Education



ELIZABETH SPRINGSTUN, M.A., Ph.B.
Education



WREN STALEY, Ph.D., M.A., B.A.
English



BERTHA STAURIANOS, Ph.D., M.A.,
B.A. Psychology



ROBERT F. TOPP, Ph.D., M.A., B.E.
Director of Graduate School

Our Faculty



KATHRYN VOELZ, R.N.
Nurse



JOHN WADDELL, M.F.A., B.F.A.
Art



JESSIE WEILER,
Alumnae Co-Ordinator



DORWIN E. ZAPPE, B.E.
Education



WALTER ZUKOWSKI, M.A., B.A.
Crafts

NATIONAL FACULTY NOT PICTURED

EDNA FORREY, M.A., B.A.
Psychology

HELEN ORTIZ, M.A., B.A.
Education

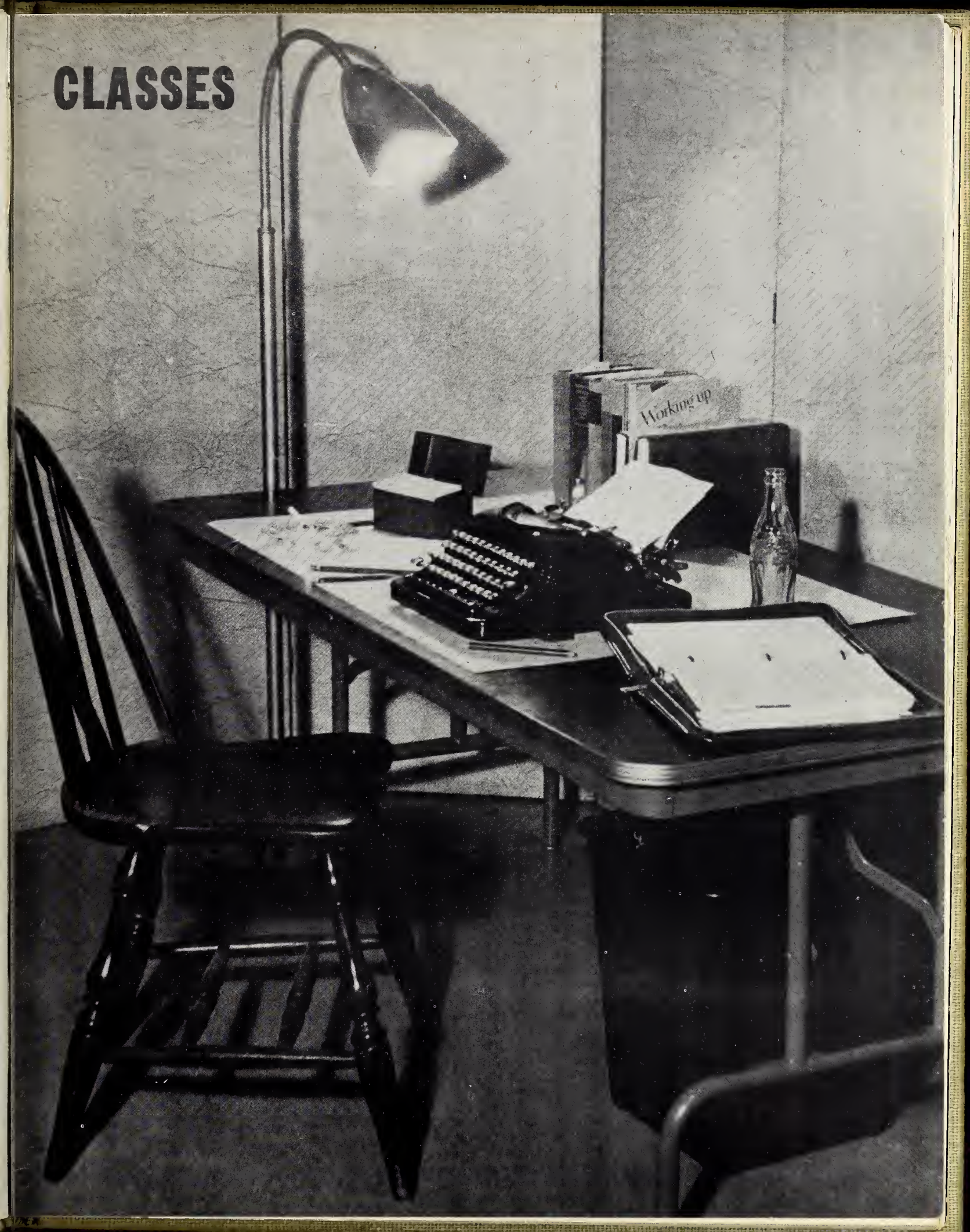
WILMA D. VANDERMEULEN, B.S., M.A.
Home Economics

JAMES KLEEMAN, B.Mus.
Music

MARY POPE, M.D., M.A., B.A.
Science

Our Faculty

CLASSES





RELAXING AT THE STUDENT CENTER

Senior Class Officers



D. Bunn, Treasurer; T. Ladd, President; B. Harrison, Vice President; Miss McCaslin, Sponsor; G. Potter, Social Chairman. (Not pictured is B. Arnheim, Secretary).

Four years of college work and fun are all behind us now. We can look back and remember our freshman biology classes, sophomore hockey champs and daisy chain, junior prom and junior-senior brunch and now our senior year, filled with many things more for us to remember..

In December we decorated the tree at the Rec House and also gave the senior prom called "Frosty Fantasy." Before we knew it we were busy going to placement meetings, filling out applications and nervously waiting for interviews.

The spring festival was exciting for us and when it was over we realized that graduation was getting closer and closer. It was not until we put on the cap and gown that we realized that what we had worked for all the four years was opening up a bright new future for us. With tears, memories and expectations we close the book of activities for the class of 1953.



AFFLECK, JOAN

Hammond, Indiana
DePauw University
Choir, 2, 3; YWCA, 2, 3; ACE, 2, 3.

Singing — par excellence . . . Ice Skating Queen
of 1953 . . . "Hey, Gene, want a game of ping pong"
. . . a friendly smile.



ALPER, JUNE

Chicago, Illinois
University of Illinois
YWCA, 4; ACE, 4.

Neat and shiny . . . books piled high . . . "Oh, I'm
sure I got a terrible grade" . . . "Someday he will
come along."



ANDELFINGER, ROZANNE

Dubuque, Iowa
State University of Iowa
YWCA, 3, 4; ACE, 3, 4; Drama Club, 3.

"And a cheerful good morning to you" . . . Miss
Life of the Party . . . we all call her Rozie.

ARNHEIM, BARBARA

Glencoe, Illinois
Pine Manor
ACE, 3, 4, Class secretary, 4.

A muse of the arts . . . "Let's sell more rolls" . . .
attractive and capable . . . a flash when reading
the minutes and calling role.



BAKER, HELENE

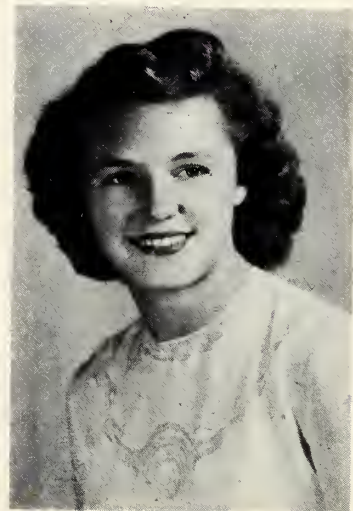
Chicago, Illinois
University of Illinois
ACE, 4.

"What better home could we find than in the army"
. . . bridge over at the Rec. House . . . "Mrs. Good-
man sounds great."

BARNES, NANCY

Evanston, Illinois
College Council, 3, 4; National, 1; Adver-
tising editor, 2, 3; Assistant editor, 3;
Editor, 4; Athletics, 1, 2, 3, 4; ACE, 2, 3, 4;
Drama Club, 1, 2, 3, 4; Jean Carpenter
Arnold Scholarship.

Always flashing . . . "It's too early for bed" . . .
there's a Ford in her future . . . "Yearbook meeting
tonight" . . . loyal Cub fan.





BAUM, JOY

Chicago, Illinois
University of Wisconsin
ACE, 4; Drama Club, 4.

"I set my hair last night" . . . the National brownie
. . . "Please, I'm old enough to vote" . . . a whiz at
the piano.



BAYGOOD, MARCIA

Chicago, Illinois
University of Illinois
YWCA, 4; ACE, 4.

Laughing eyes and a perpetual smile . . . "Bridge,
anyone?" . . . the suntan baby . . . a pencil and
sketch book in hand.



BENNETT, SALLY

Evanston, Illinois
College Council, 4; YWCA, 3, vice presi-
dent, 4; ACE, 4; Drama Club, 3.

"Let's" . . . poky but sweet . . . "I'm very pride" . . .
"How about giving me a ride" . . . a hard worker
in Y.

BJORK, JOAN

Chicago, Illinois
Monmouth College
Dorm hall treasurer, 3; Choir, 4; YWCA,
3, 4; ACE, 4; Class activities chairman, 4.

Heart belongs to the Navy . . . blond, bright, and
bonnie . . . "Let's go to Northwestern's library to-
night" . . . neat is the word.



BLECHMAN, MRS. FRANCES

Glencoe, Illinois
ACE, 2, 3, 4; Assistantship Glencoe Nur-
sery School, 4.

"Friday night again?" . . . wonderful friend . . .
"Reading, writing arithmetic — when am I out?"
. . . "Anyone want a ride?"



BLEDSON, JOAN

Hinsdale, Illinois
Ripon College; Lesely College
Athletics, 4; ACE, 4.

"I like Mike" . . . knitting argyles . . . "You for me"
. . . California collections . . . "Hi ya dahlh."





BOYLAN, SUZANNE JERRE

Evanston, Illinois
Choir, 1, 2, 3; ACE, 4.

Small and neat . . . big eater . . . "Which one?" . . .
fun . . . perk . . . "Do you have a cold?"

BRANDWEIN, MRS. NANCY

Chicago, Illinois
University of Illinois

Citation . . . "It's the inner spring that's got every-
thing . . . "God Bless my mother's freezer."



BRATRUDE, MRS. CORINNE

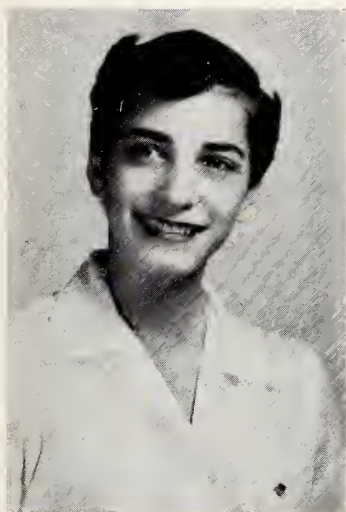
Chicago, Illinois
Augustana
Choir, 3; YWCA, 3.

"Isn't that a pistol?" . . . the doctor, her favorite
pastime . . . "What shall I have for dinner tonight?"

BRAUN, CHARLOTTE JEAN

Chicago, Illinois
Choir, 1, 3; YWCA, 1, secretary, 4; ACE,
1, 4; Drama Club, 2, 3; Scholarship Em-
erson House, 4.

Char . . . "I've got to go roller skating" . . . triple
auntie . . . "Those elevator men, especially" . . .
master of nursery school . . . "You betcha."



BRONSTON, BARBARA ANN

Larchmont, New York
Chaff, 4; ACE, 3.

Bobby . . . "Rise and shine?" . . . opera every Sun-
day . . . artistic . . . chic . . . speed limit only 75.

BUNN, DOLORES

Beloit, Illinois
Beloit College
ACE, 4; Class treasurer, 4.

Dee . . . personality plus . . . she has brightened
many a dull moment . . . she is a true and loyal
friend to all.

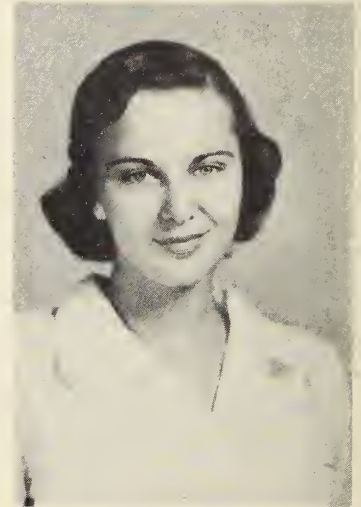




BURNSTEIN, MARJORIE

Beverly Hills, California
University of Illinois; University of California
YWCA, 4; ACE, 4

Margie . . . also called laughing girl . . . "Another blind date?" . . . she can play bridge? . . . loyal to Illinois.



BUTCHER, DORIS

Evanston, Illinois
College council president, 4; Chaff, 1, 2,
Editor, 3; National, literary editor, 2; Ath-
letics, 1, 2, 3, 4; Choir, treasurer, 1, 2;
YWCA, 4; ACE, 1, 2, 3, 4; Class publicity
chairman, 1; Mrs. John N. Crouse Scholar-
ship, 4; WHO'S WHO.

Executor of Robert's Rules of Order . . . globe trotter
. . . "It's not lost, just misplaced" . . . "Want a ride?"
. . . "California, here I come."



BUTTERBAUGH, MRS. JOANN

Evanston, Illinois
Manchester College; University of Toledo

"Stuff 'n' things 'n' people" . . . cracking ice . . .
"Only when I'm alone or with somebody."

CHRISTENSEN, JEAN

Wilmette, Illinois
Chaff, 3, 4; ACE, 4; Drama Club, 3, 4;
secretary of Curriculum Committee, 4; Eliza-
beth Harrison Scholarship, 4; WHO'S WHO.

Always making posters . . . week-ends spent in
studying . . . "Housekeeping used to be fun, but not
anymore" . . . "I don't fall in lakes anymore."



CROXTON, MARTHA JANE

Columbus, Ohio
Dorm hall chairman, 1; Chaff, business
manager, 3, Editor, 4; Athletics, 1, 2, 3, 4;
YWCA, 3; ACE, 1, 2, 3, 4; Class treasurer,
2; Ambassador, 3, 4; Demonstration School
Scholarship, 4; WHO'S WHO.

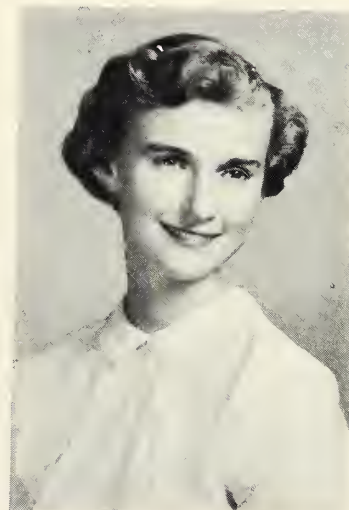
Marty . . . constantly striving toward perfection . . .
"Hey, you guys, I've got skads of work to do" . . .
friendliness and cooperation are characteristic.



DAY, JOANNE

Skokie, Illinois
YWCA, 4; ACE, 4; Drama Club, 1, 4;
Assistanship Boys' Latin School, 4.

"This time it's the real thing" . . . eager listener to
lonely hearts . . . "Bridge, anyone?" . . . '21 — aren't
you scared."





DELBRIDGE, MRS. WINNIE

Chicago, Illinois
Oklahoma A&M; Lindenwood; Colorado
College of Education

Piano playing . . . "Heading for the south . . . smooth
accent . . . "Oh, horrors . . . buoyant personality.

DENDRINOS, MRS. JANICE

North Muskegon, Michigan
Michigan State College
Dorm treasurer, 3, president, 4; College
Council, 4; National, 3; ACE, 3, 4; Drama
Club, secretary, 3.

A capable wife . . . "I sure do miss old Georgie
Porgie" . . . an excellent dorm president . . . our
little Jan.



DICHTERMAN, MRS. SYDELLE

Chicago, Illinois
University of Wisconsin

"Ask her if she's got room for me" . . . "Three for
bridge, please" . . . "So glad the door is fixed."



DROEGER, DOLORES

Chicago, Illinois
Beloit College
YWCA, 3; ACE, 4.

"Oh, that long trip from Chicago" . . . always likes people . . . what a hard worker . . . likes to play with a camera.



EBERLE, MARGARET

Park Ridge, Illinois
North Park
YWCA, 3, 4; ACE, 4; Drama Club, 3;
Dance Group, 3.

Enthusiastic as they come . . . "Do I have to rip again?" . . . terrific sense of humor . . . "Can't, gotta study."



EILENBERGER, HELEN

Evanston, Illinois
College Council vice president, 4; YWCA,
2, 3, 4; ACE, 1, 2, 3, 4; Drama Club, 2, 3,
4; Class social chairman, 2, president, 3;
Ambassador, 3, 4; Eva Grace Long Schol-
arship, 4; WHO'S WHO.

Cheez . . . "You gotta start off each day with a song" . . . magic fingers across the piano . . . she's vim, vigor, vitality, topped with personality.





ELLISON, MARY

Elmhurst, Illinois
St. Olaf College; Macalester College

Speaks of Willy . . . "Loved the kids at Hull House
. . . tall, dark and thin . . . "I really didn't expect
an A."

FANCHER, JOYCE

Evanston, Illinois
Grinnell College
YWCA, 3, 4; ACE, 4; Curriculum Com-
mittee, 3, 4.

Always loyal to Grinnell . . . a music lover . . .
true to teaching . . . haunts the library constantly
. . . a twin, but nothing like him.



FRANZON, GUNNEL

Chicago, Illinois
North Park
YWCA, worship chairman, 3, 4; ACE, 4.

Quiet gal . . . "I've got all the hospital news" . . .
a new home in Michigan . . . an orphanage helper.



FRENCH, MRS. SALLY

Stambaugh, Michigan
ACE, 1, 2, 3.

"Have to go home and open up a can for supper"
... just give her a uke, a song and a crowd.



FUTTER, NANCY

Mishawaka, Indiana
St. Mary's - Notre Dame
Dorm hall social chairman, 3, 4; YWCA,
3, 4; ACE, 4; Sheil Club, 3, 4.

Nan ... red hair ... jazz unlimited ... "Hey, mom"
... Thursday night shopping ... bedtime cigarette
with Fisher ... "We're close to Glenview."



GERSHMAN, EUNICE

Chicago, Illinois
TGA social chairman, 4; YWCA, 1, 2, 4;
ACE, 1, 2, 3, 4; Drama Club, 1, vice presi-
dent, 2, president 3; Dance Group, 1, pub-
licity chairman, 2 vice president, 3; Am-
bassador, 4; Demonstration School Scholar-
ship, 4; WHO'S WHO.

"Hev cutie" ... radioactive ... production manager
of the seventh grade ... "Where's the next re-
hearsal?" ... creative ... wonderful spirit.





GORDON, MARCIA

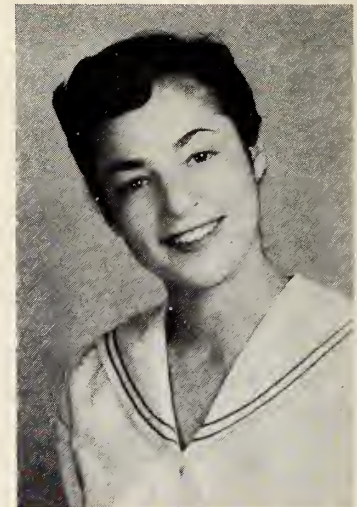
Chicago, Illinois
Purdue University; De Paul University
Drama Club, 3.

"Broke plus" . . . waiting for that parchment . . .
"Bumped into a parked car" . . . "Let's face it" . . .
"You can't fight it."

GROSBY, MARILYN SAREE

Chicago, Illinois
University of Illinois
ACE, 4.

"Have you seen Sheila?" . . . "That slow poke in
front of me is only going 60" . . . "These fool drivers."



HANDLER, MRS. BARBARA

Chicago, Illinois
University of Illinois
ACE, 4; Drama Club, 3, 4.

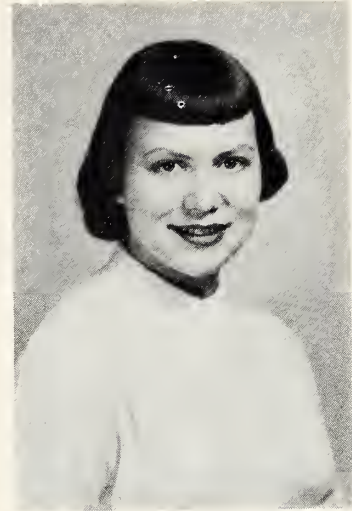
"Mon Dieu, Cordera" . . . a happy gal . . . "Jerry
says" . . . "How's your gentleman friend?" . . .
"It's a real thing."



HARLAN, PEGGY

Jerseyville, Illinois
Athletics, 1, 2, 3, 4; YWCA, 2, 4; Chotr, 2;
ACE, 2, 3; Drama Club, 3, 4; Dance Group,
3.

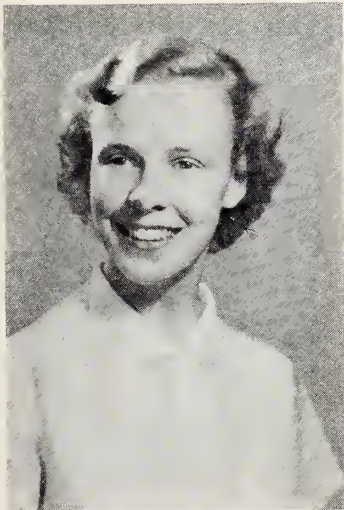
Her problems are her own . . . a great teaser . . .
always good for a laugh . . . it's only Freddy . . .
wonderful friend.



HARRISON, BARBARA

Evanston, Illinois
College Council secretary, 4; Athletics, 1,
2; YWCA, 1, 2, 3, WSSF chairman, 4; ACE,
4; Drama Club, 2, 3, 4; Class social chair-
man, 1, secretary, 3, vice president, 4; Dem-
stration School Scholarship, 4; WHO'S
WHO.

Beautiful and wise . . . "Oh, listen" . . . an extra
special extra curricular miss . . . she loves the
ballet.



HASKELL, MERRIT

Kansas City, Missouri
Beloit College

A great lover of music and all of the fine arts . . .
very thoughtful . . . follows in her father's footsteps
— a whiz in literature.





HAWKINS, ANNE

Daytona Beach, Florida
College Council, 4; Chaff, 3, 4; Athletics,
1, 2, representative, 3, chairman, 4; Choir,
3; ACE, 2, 3, 4; Dance Group, 1, 2, 3;
Scholarship Mary Crane, 4.

"Vacation time and where will I go?" . . . what an
appetite . . . "We'll see" . . . Oh, those Hull House
Blues" . . . "Decisions, always decisions."

HEFTER, MURIEL

Chicago, Illinois
University of Illinois, Navy Pier
Choir, 4; ACE, 4; Drama Club, 3, presi-
dent, 4.

The perennial old man . . . lilting siciliana . . . groan-
ing bass . . . "This July 4th will be the last inde-
pendent day for Reece."



HILL, RACHEL R.

Oberlin, Ohio
Beloit College
YWCA, 3, 4; ACE, 3, 4; Drama Club, 3, 4.

Rach . . . infectuous laugh . . . "Do you need a knit-
ting pattern? . . . "Oh, for heaven's sakes" . . .
"Guess I'd better clean my room."



HIPP, NANCY JEAN

Aurora, Illinois
Edgewood College
YWCA, 3, 4; ACE, 4; Sheil Club, 3, 4;
Assistantship Glenview Community Church,
4.

Nan . . . full of fun . . . never a dull moment . . .
"Someone say Army?" . . . listen to those knitting
needles click.



HROBSKY, MARY MAC

Lyons, Wisconsin
Lawrence College
Junior transfer representative; Choir, 3;
ACE, 4; Drama Club, 3, 4; Sheil Club, 3;
Class social chairman, 3.

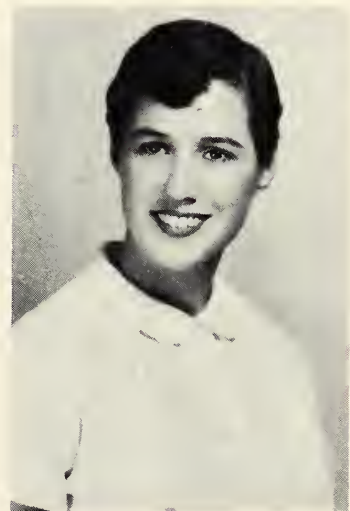
Mac . . . on the go . . . vivacious and vigorous . . .
a good worker back stage . . . "I'll see ya" . . .
brown eyes . . . enjoys art.



KANTER, JOAN

Chicago, Illinois
Wheaton College
YWCA, 4.

"I'm just furious . . . the winning smile . . . "Is that
a new sweater?" . . . "I'm for Yates" . . . "Anyone
want a ride?"





KASMIR, ALICE

Chicago, Illinois
Choir, 1; YWCA, 1, 2; ACE, 4; Drama
Club, 3; Sheil Club, 1, 2, 4.

Dependable . . . quiet . . . sweet . . . good for timely
laughs . . . terrific knitter . . . "I can hardly wait."

KEINIGSBERG, DELPHINE

Homewood, Illinois
College Council, 3, 4; Chaff, 4; Athletics,
1, 2, 3; ACE, 3, 4; Dance Group, 1, 2, 3,
president, 4; Assistantship Glencoe, 4.

Del . . . dance, dance, dance . . . "What'll I do?" . . .
smiling face . . . "We're only friends" . . . "Hey,
you guys, he-e-elp me."



KILLIPS, ROSLYN

Park Ridge, Illinois
Mount Mary College
ACE, 4; Sheil Club, 2, 3, 4.

Roz . . . shrimp boat . . . "I like fruit salad" . . . "Meet
you in the car" . . . "Rip two rows before you con-
tinue."

KNELL, GERALDINE

Coloma, Michigan
University of Illinois

Michigan — that is . . . "I'm a U. of Illinois gal" . . .
"Cards, anyone?" . . . At last it's June.



KOLSTOE, MRS. BEVERLY

Waukegan, Illinois
Lake Forest College
Drama Club, 2, 3, 4.

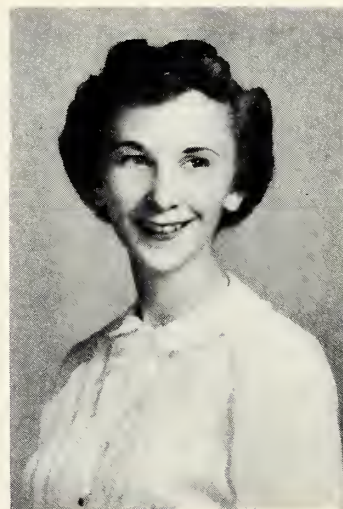
"He's sailing the high seas" . . . "My kids in drama school" . . . hard little worker . . . "Give me drama any time."



LADD, THELMA JANE

Chicago, Illinois
College Council, 3, 4; Choir, 1, 2, 3, 4;
YWCA, 2, publicity chairman, 3, 4; ACE,
4; Drama Club, 1, 2, 3, 4; Class citizenship
chariman, 2, vice president, 3, president,
4; Demonstration School Scholarship, 4;
WHC'S WHO.

T.J. . . . "Chris is waiting" . . . commander-in-chief of
seniors and eighth graders . . . "Seniors, what's your
pleasure?" . . . choir robe owner after four years.

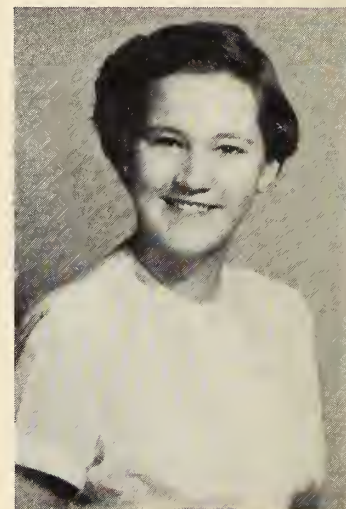




LEONARD, NANCY

Barrington, Illinois
De Pauw University
YWCA, 3, 4; ACE, 4; Class publicity chairman, 3.

A letter post marked Cambridge . . . the swish of a paint brush —the click of knitting needles . . . "Hey, you guys."



LESTER, KAY

Rockford, Illinois
ACE, 1, 2, 4; Sheil Club, 1, 2.

Homesick for home . . . always a smile . . . "How many days left — 3, 2, 1." . . . "Walt's coming for me."



LEVY, SUZANNE

Deerfield, Illinois
YWCA, 1, 2, 3, 4; ACE, 1, 2, 3, 4; Drama Club, 1, 2, 3; Scholarship Emerson House, 4.

"Sorry we have to go to the library" . . . "Can't; have to go to work tonight" . . . at last she said, "O.K."

LINKON, MRS. HELENE

Chicago, Illinois
University of Wisconsin
Chaff, 2, 3; ACE, 4; Drama Club, 2, 3.

"Gordon says" . . . "Goren says" . . . clothes clothes,
clothes . . . sure knows the fashion world.



LOGSDON, MARTHA ANN

Evansville, Indiana
Chaff, 4, Athletics, 1, 2, 3; YWCA, 1;
ACE, 2, social chairman, 3, vice president,
4; Class secretary, 1; Assistantship Boys'
Latin School.

Proud of being a Hoosier . . . "You all" . . . good
sense of humor . . . "Sandy called tonight and
talked \$1.98 over time."



LOMONACO, PALMYRA

Chicago, Illinois
Wright Junior College
YWCA, 3; ACE, 4; International Club, 3, 4.

Pal . . . "I'll say" . . . Los Alamos bound . . . en-
gaged too . . . never without a smile . . . Chapeau
Bas to a campus favorite.





MANN, SHEILA

Chicago, Illinois
University of Michigan
ACE, 4.

"Are you driving today?" . . . Six no trump" . . .
"Say, kids, did any of you see Marilyn?"

MAYER, MRS. ELIZABETH

Chicago, Illinois
National, photography editor, 3; YWCA,
3, 4; ACE, 4; Drama Club, 1, 2, 3, 4;
Demonstration School Scholarship, 4.

Betty Jo . . . oh, those blue, blue eyes . . . "Love
those third graders" . . . "Bloop" . . . a trip to Racine
. . . "He's in Detroit."



MEISLE, LOIS MARIE

Appleton, Wisconsin
Macalester College
YWCA, 4; ACE, 4.

One of the dorm knitters . . . a young canary . . .
another Wisconsinite . . . clever with her hands . . .
always on the go.

MORGAN, MARY ALLEN

Chicago, Illinois
Milwaukee - Downer
Dorm hall social chairman, 3, Dorm social
chairman, 4; National, 3; ACE, 3, 4; Drama
Club, 3.

Mike . . . Birdie-doo the second . . . girls of many ac-
cents . . . "Woo, woo, here I am." . . . "Let me tell
you."



McKILLEN, MRS. MADELEINE

Park Ridge, Illinois
Dickinson College; Barnard College;
University of Pennsylvania

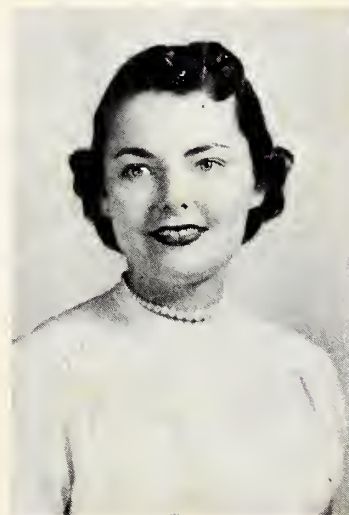
"That's my Annabelle" . . . grapefruit for lunch . . .
where did you get that accent? . . . "We're off to
Europe."



NELSON, NANCY

Peoria, Illinois
ACE, 1, 2.

Weekends call her home to Bob . . . full of fun and
mischief . . . "You do it, I've used all my energy
thinking about it."





NORGREN, MRS. FRANCES

Winnetka, Illinois
Beloit College
YWCA, 3; Drama Club, 3, 4.

Frannie . . . overflowing with sparkle is this tiny miss
. . . she thinks housekeeping is — "Ah bliss."

NOREN, BETTY ANN

Fort Wayne, Indiana
Choir, 1, 3, president, 4; ACE, 2, 3, 4;
Travel Club, 1; International Club, 2, 3, 4;
Demonstration School Scholarship, 4.

Always looks like a Patricia Stevens' model . . .
golf . . . "Where are you going tonight?" . . . "To
P.H.Q."



OLSON, MRS. FRANCES

Chicago, Illinois
Athletics, 1, 2, 3; Sheil Club, 1, 2, 3, 4;
Class athletic representative, 1, social
chairman, 2.

Fran . . . "Let's rough it this weekend" . . . terrific
sport . . . full of pep and enthusiasm . . . "Cheers
for waterless cookers."



OLSON, VIRGINIA MARY

Milwaukee, Wisconsin
Mount Mary College
Choir, 3; YWCA, 3, 4; ACE, 4; Sheil Club,
3, 4.

Notorious for her Milwaukee slang . . . well known
for her quick wit and ready smile . . . pretty eyes.



ORR, PATTI ANNE

Hammond, Indiana
ACE, 2, 4; Drama Club, 2, 3, 4; Travel
Club, 1; Demonstration School Scholarship,
4.

A true Hoosier . . . "Has he got a friend?" . . . fourth
for bridge . . . "Let's eat" . . . late for class as usual.



PALMER, PRUDENCE ANNE

Evanston, Illinois
Lindenwood
ACE, 3.

Prue . . . "A test again?" . . . "He's so sweet" . . .
"Canton, here I come" . . . a true friend to have
around.





PAPPAS, FREDA

Chicago, Illinois
Wilson Junior College
YWCA, 3; Drama Club, 3; Assistantship
Mary Crane, 4.

"Hey, listen" . . . a clever and gay gal of the day
. . . ready any time for a cup of coffee . . . energy
to burn.

PETERSON, ELEANOR N.

Chicago, Illinois
North Park Junior College; Bethel College
YWCA, 3; ACE, 4.

Friendly and full of fun . . . a ready smile for every-
one . . . "Say, kids, do any of you want a ride?"



PHILLIPS, MRS. ELAINE

Chicago, Illinois
University of Illinois
YWCA, 3; ACE, 4; Drama Club, 3, 4.

"We're loyal to you, Illinois" . . . we wonder if Bob
will survive your cooking . . . Queen of the gum
crackers.



PILKA, MRS. HEDDA

Evanston, Illinois
Evanston Community College
YWCA, 3; ACE, 4.

"Two weeks, four days, two hours until I'm married"
... always laughing ... "I overslept again."



POTTER, MRS. GEORGIA ANNE

Hammond, Indiana
Iowa Wesleyan College
Choir, treasurer, 3; YWCA, 3, 4; ACE, 4;
Drama Club, 3, 4; Class treasurer, 3;
social chairman, 4; Assistantship, 4.

Jo . . . vivacious . . . a serious worker and leader
. . . always poised . . . really enjoys fun . . . an
excellent homemaker for Bob.

RANDALL, SARAH

Wauwatosa, Wisconsin
Carroll College
National, art editor, 3.

Rudolph . . . "Oh, that Stevie" . . . little girl in green
. . . "Shall I wear my hair back or down?" . . .
horses, horses, horses.





RENIER, JEANNINE

Maywood, Illinois
Lawrence Colloge
ACE, 3, 4; Drama Club, 3, vice president,
4; Curriculum committee, 4; Citizenship
chairman, 4.

" Oh, dear, play practice again" . . . loves records,
books and foreign films . . . "I know it's somewhere
on my desk."

REIZNER, MRS. MURIEL

Chicago, Illinois
University of Illinois; Roosevelt College
Athletics, 3; YWCA, 3.

The gal with the sparkling personality . . . math-
ematical genius . . . "I almost didn't get to this class."



RIBSTEIN, ALICE

Chicago, Illinois
Choir, 2, 3, 4; YWCA, 1, 2, 3, 4; ACE, 1,
2, 3, 4; Drama Club, 1, 2, 3, 4; Ambassa-
dor, 4.

Oss . . . Cleopatra . . . "What are you doing this
weekend?" . . . vivace . . . modern muse of music.



ROSS, MRS. BERYL

Chicago, Illinois
University of Illinois

Sissy . . . "Me afraid of dogs?" . . . "Where did you dig up that lead?" . . . "When I was at Illinois . . ."



RUSSELL, MRS LUCILLE

Ramer, Tennessee
Lambuth College; New York University

She's just a quiet girl . . . soft voice and smooth accent . . . always the hard working homemaker.

SCHULTZ, MRS. MARGARET

Maywood, Illinois
Lawrence College
National, 3; ACE, 3, 4; Drama Club, 3, 4.

Peggy . . . "I know I'll be on time for the wedding"
. . . just like molasses in January and twice as sweet
. . . "Those government tests."





SEILER, EUNICE

Sister Bay, Wisconsin
ACE, 2, 3; Drama Club, 1, 2, 3; Assistant-
ship Boys' Latin School, 4.

The proud auntie . . . "What can we do tonight?" . . .
the good old rock . . . "Got any coffee?" . . . "A
double dip chocolate."

SHAPPI, JOYCE

Chicago, Illinois
TGA, vice president, 3, president, 4; Col-
lege Council, 3, 4; Athletics, 1, 2; Choir,
1, 2; YWCA, 4; ACE, social chairman, 2,
3, 4; Drama Club, 3; Scholarship Mary
Crane Nursery School, 4.

Dependable and sincere . . . "Gee, kid" . . . always
ready to lend a helping hand . . . "Are you still
going to California with me?"



SHEPHERD, BARBARA

Clarendon Hills, Illinois
Grinnell College
Junior transfer representative, 3; Dorm
vice president, 4; YWCA, 3, 4; ACE, 3;
Drama Club, 3, 4; Dance Group, 3; class
citizenship committee, 3.

Babo . . . "Anyone for a campus?" . . . John "That
hole in Hinsdale will soon be a home" . . . Oh, that
Charleston."



SHIFRIN, BARBARA

Chicago, Illinois
ACE, 2, 3, 4; Assistantship Glencoe Nur-
sery, 4.

"Too late to buy books" . . . "Oh, so much lunch"
. . . "Four more days until Friday" . . . "We have to
pay for that too?"



SONENBLUM, MRS. LORNA

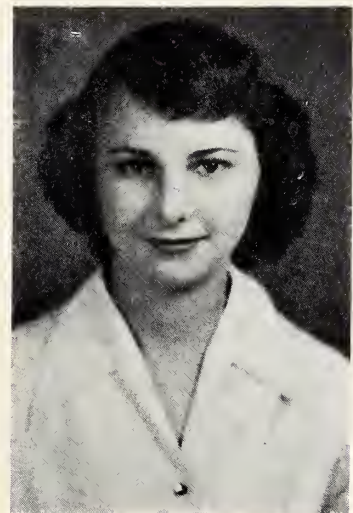
Chicago, Illinois
University of Illinois
Assistantship Mary Crane Nursery, 2.

"She dragged me out of the library" . . . "Save me
a seat for bridge" . . . "Let me out of here, I've got
to go to the store."

SPRUNGMAN, JUNE

Chicago, Illinois
ACE, 2, 3, 4.

"He's just my Bill" . . . soon the melody from Lo-
hengrin . . . "I haven't got time" . . . "The first
graders can't."





STOTT, JILL

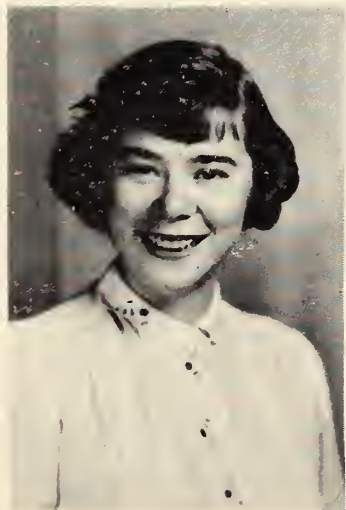
Milwaukee, Wisconsin
Dorm assistant social chairman, 2; College Council, 3, 4; Chaff, 3; Athletics, 1, 2, 3; ACE, 1, 2, vice president, 3, president, 4; Demonstration School Scholarship, 4

"Oh, and did I tell you?" . . . live and let live . . .
a whizz with needle and thread . . . Texas bound . . .
authority on Pennsylvania Dutch art.

STUART, MARGARET

Grand Rapids, Michigan
Endicott Junior College
YWCA, 3, 4; ACE, 4; Class publicity chairman, 4.

Pol . . . Birdle doo the first . . . as 3A's chairman
she keeps things bouncing . . . "Well, let me tell
you I nearly died laughing."



TALYOR, MRS. CAROL

Evanston, Illinois
Denison University

"I can't, I have to go home and clean the house . . .
No time for school activities, she's married . . . "What
'sha doin,' boy?"

THIES, MARY

Chicago, Illinois
Navy Pier; North Park
Dorm hall chairman, 3, Dorm secretary, 4;
YWCA, 3, 4; ACE, 4; Drama Club, 3, treasurer, 4.

"Anyone for pizza?" . . . "Ah, those midnight snacks"
. . . a blind date?" . . . "Sure, how tall is he?" . . .
"Now, where did I put it?"



THOMAS, LAYUNA

Evanston, Illinois
Evanston Community College
YWCA, 3, 4; International Club, 3, social
chairman, 4; Curriculum committee, 4.

She laughs from the heart . . . "Hi" — Clint Youle
style . . . a sparkle in her eyes . . . a golden voice.

TINGLER, GWENN

Chicago, Illinois
Morton Junior College
ACE, 3, 4.

She's full of fun and mischief . . . "My heart and
liver" . . . naturally curly hair . . . "Make-up."





WARNER, MRS. ELAINE

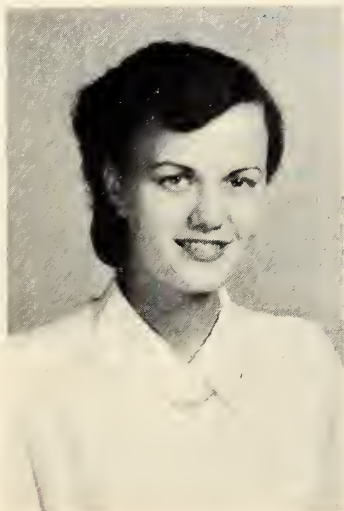
Evanston, Illinois
YWCA, 3, 4; ACE, 4; Drama Club, 1, 2, 3.

"Ok, let's" . . . 641 days to go . . . "Oops" . . . "Only one week" . . . "Oh, Bennett, be my partner."

WATTS, JOAN

Ottawa, Illinois
University of Illinois
YWCA, 4; ACE, 2, 3, 4.

Blanche . . . this gal can see something funny in everything . . . "Well, I'm so upset, I just don't know what I can say to you."



WIDMARK, JOYCE

Chicago, Illinois
North Park
Dorm hall treasurer, 3; National, 4; YWCA, 3, social service chairman, 4; ACE, 3, membership, publicity chairman, 4; Drama Club, 3; International Club, 4.

A gal of ideas . . . "Can't make it, I have three meetings tomorrow" . . . always has the solution . . . what would we do without her?

WONG, SHUK MOY

Singapore
Trinity College of Singapore
YWCA, 3, 4; ACE, 4; International Club,
3, 4; Foreign Student Scholarship, 3, 4.

Shuk . . . "Will you post a letter for me?" . . . her
hidden humor is always popping out . . . Sumatra
bound.



YOSHIDA, NOBUKO

Hamasaka, Japan
Doshisha Women's College of Liberal Arts
YWCA, 3, 4; International Club, 3, treas-
urer, 4; Edna Dean Baker Scholarship, 4.

Noby . . . our life size Japanese doll . . . "Really"
. . . loves to bake cookies . . . her heart is as warm
as her smile.

SENIORS NOT PICTURED

MARIANNE GREENFIELD
LORA KALT
MARY ROGERS

RUTH E. HILLMAN
LOVES LITTLE
CHILDREN AND
THIS FOUNTAIN
IS GIVEN IN
HER NAME

EVERYONE THAT THIRSTETH COME
DRINK YE TO THE WATERS

SCHOLARSHIP



Fourth Row: H. EILENBERGER, Eva Grace Long Scholarship; N. BARNES, Jean Carpenter Arnold Scholarship.

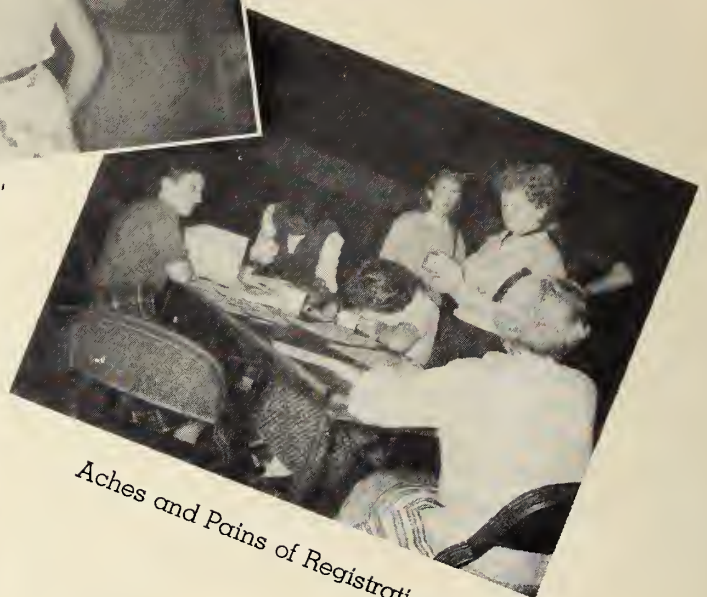
Third Row: B. MAYER, Demonstration School Scholarship; E. GERSHMAN, Demonstration School Scholarship; B. NOREN, Demonstration School Scholarship; N. YOSHIDA, Edna Dean Baker Scholarship; J. CHRISTENSEN, Elizabeth Harrison Scholarship; J. SHAPPI, Mary Crane Nursery Scholarship.

Second Row: B. HARRISON, Demonstration School Scholarship; C. BRAUN, Emerson House Nursery Scholarship; T. LADD, Demonstration School Scholarship; M. CROXTON, Demonstration School Scholarship; D. BUTCHER, Mrs. John N. Crouse Scholarship.

First Row: A. HAWKINS, Mary Crane Nursery Scholarship; J. STOTT, Demonstration School Scholarship; P. ORR, Demonstration School Scholarship.



"Don't Get Around Much Anymore"



Aches and Pains of Registration



Tea Time!



The Gracious Hostess



"Well, I'm From . . ."

EARLY DAYS



Mrs. Breit, Sponsor; G. Hackl, Social Chairman; A. Hansen, President; M. Thayer, Treasurer; L. Wallace, Secretary.
Seated: E. Rye, Vice President.

Junior Class Officers

Our junior class began the year by welcoming a large group of junior transfers. We got better acquainted with them at small parties given in several homes.

All of us worked hard for "Santa's Cellar Sale." Our booth, which sold felt stockings glittering with sequins and beads, made a very decorative contribution to the holiday atmosphere. Also during the Christmas season we had a pot-luck supper.

Most of us were busy with student teaching this year but we all found time to work on our mixer dance and junior prom. We seem always to have time for a little fun.

At the traditional junior-senior brunch we helped to say 'goodbye to the seniors. Many of our big sisters will be graduating and we shall miss them next year.

With the close of the junior year we are beginning to realize that we have a big year ahead of us. All we can say is, "On to our senior year!"



Back Row: K. England, B. Alber, E.
Rye, D. Bach.
Third Row: F. Biggs, G. Hackl, M.
McDougle, H. Neleman.
Second Row: M. Griffin, G. Goller,
N. Bennett, L. Bohman.
Front Row: D. Denison, Mrs. Breit,
sponsor, R. Beal.

Junior Class

Junior Class

Back Row: K. Burchfield, J. Dobbert, S. Binner, S. Drummond, M. Bihlman, M. Long, M. Thompson, V. Hieronymus.
Fourth Row: R. Wolz, S. Kocalis, P. McRoberts, A. Hansen, M. Rosenberg, L. Calderon, B. Zipperman.
Third Row: H. Allegan, J. Hershenhorn, K. Gulbrandsen, H. Rubin, R. Oliff, D. Bjorkman, J. Popp.
Second Row: C. Stinson, G. Cooper, A. Ramser, M. Zeigmund, N. Meyers, T. Gage, A. Pohland, L. Boggs.
Front Row: N. Alpert, J. Hanson, B. Glassoff, D. Schulman, J. Sugar, B. Hannaum, L. Levy.





MEMORIES

Sophomore Officers

N. Whalen, Vice President; D. Friedlander, President; Miss Healy, Sponsor;
R. Ricketson, Social Chairman; H. Harman, Secretary. (Not pictured is J. Bevins,
Treasurer).





Back Row: G. Campagna, M. Zimmerman, J. Driscoll, B. Kaiserman, M. Himmelstein.
Third Row: S. Krebs, L. Weil, J. Nemerowski, B. Adler, H. Harman, M. Toves.
Second Row: C. Keren, M. Sherry, D. Lyde, S. Mierson, S. Lenci, M. Glavis.
Front Row: D. Neimark, R. Turek, B. Kaplan, J. Eisenstadt.

The sophomore class started the year with the annual October dance. This year it was called "Mirror Magic."

We have been busy workers all during this year. Many friendships were made while we worked together on the bazaar, barbecue suppers and class parties. Of course our traditional job of the college directory was one of the biggest projects we undertook this year.

In February we had a sock hop. This dance was given for the whole college and everyone had a good time.

June finally came and we took on the honor of carrying the Daisy Chain at graduation. It was a beautiful way of saying goodbye to the seniors and made us realize that soon we shall be seniors ourselves.

Sophomore CLASS

Back Row: J. Anderson, J. Jakes, V. Wilson, M. Lawrence, D. Fuhrman, K. Pederson, R. Ricketson, L. Holm, N. Miller.
Third Row: D. Hale, M. Lundgren, L. Renwanz, J. Hartter, B. Leon.
Second Row: J. Guen, L. Whitaker, S. Bakal, L. Young, S. Melzer, Miss Healy, sponsor, L. Dushnitzer, N. Wahlen.
Front Row: P. Micucci, A. Hildebrand, T. Adams, D. Friedlander, B. Langefeld.





Top Row: P. Rhoten, social chairman; Mr. Zukowski, sponsor; A. Goldberg, treasurer.
Bottom Row: B. Merkel, vice president; G. Sharp, president; G. Montgomery, secretary.

Yes, we are the freshmen. In September we entered as the "green" class but, with the help of the friendly upper classman, we became seasoned citizens of National as the weeks and months rolled by.

We planned a full social calendar for the year to get acquainted and become united. Many friendships were made at the various social events.

As the year closed we found ourselves better acquainted with not only the teaching profession, but also ourselves. As good citizens of National we shall respect and continue the ideals of the college. We are all looking forward to the coming years.

Freshman Officers



Top Row: M. Mannede, D. Holmes, H. Sams, G. Montgomery, R. Robinson.
Fourth Row: C. Heine, C. Green, K. King, P. Rhoten, M. Willis.
Third Row: B. Kern, J. Knarr, S. Bosch, P. Eddy, C. Rains, M. McKenna.
Second Row: B. Merkel, H. Reinertsen, Mr. Zukowski, sponsor, G. Sharp, L. Freeland.
Front Row: C. Piety, P. Kelly, B. Karnuth, E. Oechsle.

Freshman CLASS

Graduate School



As it planned its fifth year program leading to the Master of Education Degree, the faculty recognized the existence of an unusual opportunity to create a new and better type of graduate program.

Conditions were ideal: the College was small in enrollment and noted for the close relationship that existed between students and staff; it had always been devoted to elementary education and would continue to direct its entire efforts in that important area; instructors were qualified and highly enthusiastic, and they had fully demonstrated their ability to develop well-prepared teachers. Recognizing these things that were so favorable to the creation of a sound graduate program, the staff hopefully initiated its plan of action.

Its hopes were not unfounded, for in assessing progress to date one can only conclude that National has begun this new enterprise with unusual success. The years of planning that went into the program have earned their reward and the College moves on toward another notable achievement.

One hundred twenty-eight different students were enrolled in graduate courses during the summer and fall sessions this past year. Interest continues

to grow in the graduate program and as more students learn about the opportunity at National to prepare themselves to become master teachers, supervisors, or administrators, our College will soon have even greater need for its contemplated new buildings.

In a very real way much credit should go to the students whose pictures and names are to be found in these pages devoted to graduate education. They have worked conscientiously, have made suggestions of value to future graduate students and to the program as a whole. They have demonstrated fully that they intend to represent National's new degree with honor when they work at their various teaching or supervisory assignments.

Faculty members have always given much more than was asked of them. In this instance their tireless activity in planning and carrying out the program was outstanding. To teachers and students who were participants in this new venture at National College of Education goes the commendation of every friend of the College. They have made history at National!

Back Row: M. Briggs, J. Lavicka, V. Gemmel, W. Draper, H. Sloan, F. Schucikle, E. Wright, D. Cornelius, E. Hefley, M. Mitchell, H. Fogo.
Second Row: A. Thomas, C. Bacon, J. Sevlet, A. Abdallah, A. Tolman, L. Leech, B. Barley, B. Cleereman.
Front Row: J. Barrow, R. Kuroda, E. Lippman, W. Thomas, M. Turner, C. Bracco, L. Tellefson, S. Cazalet.





ABLA ABI ABDALLAH
Beirut College for Women
Beirut, Lebanon



CLARISSA BACON
National College of Education
Evanston, Illinois



BERNICE BAILEY
National College of Education
Evanston, Illinois



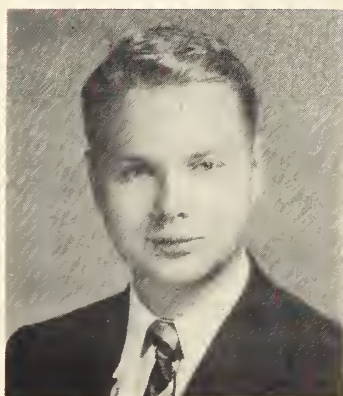
JUANITA BARROW
University of Colorado
Boulder, Colorado



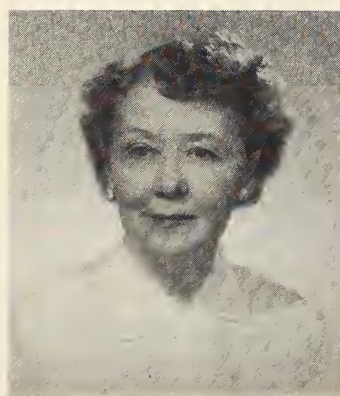
CATHERINE BRACCO
Mount Mary College
Milwaukee, Wisconsin



DOROTHY CORNELIUS
Barnard College
New York City, New York



WALTER DRAPER
Amherst College
Amherst, Massachusetts



HELEN FOGO
National College of Education
Evanston, Illinois



RUTH KURODA
Doshisha University
Tokyo, Japan



LAVERNE LEECH
Western College
Oxford, Ohio



ELINOR LIPPMAN
South West Missouri State College
Springfield, Missouri



MILFORD SHOLUND
Wheaton College
Wheaton, Illinois



WINIFRED THOMAS
Howard University
Washington



ALIDA TOLMAN
Grinnell College
Grinnell, Iowa



MARY ALICE TURNER
Grinnell College
Grinnell, Iowa



VIRGINIA WATSON
University of Colorado
Boulder, Colorado

NOT PICTURED
MARILYN HEINE
Western College
Oxford, Ohio
JUANITA PETERSON
American Conservatory of Music
Presbyterian College of Christian
Religious Education

HELPING
A
N
D
S



Ready for Action!



Our Louise



Ice Box Raid?

Our gal, Friday



"He's a jolly good fellow"

ACTIVITIES





Top Row: Miss Healy, Mrs. Galvarro, B. Alber, Miss Weiler, Miss Adams, J. Shappi, Miss Leifeste.
Second Row: G. Sharp, M. Hefter, Miss McCaslin, T. Ladd, Miss Challand, S. Bennett, A. Hansen,
H. Ellenberger, vice president.
Front Row: R. Beal, D. Denison, B. Shepherd, J. Stott.

College Council



Back Row; M. Griffin, E. Rye, treasurer; Mr. Zukowski, B. Merkel, B. Noren, M. Logsdon.
Second Row; N. Barnes, B. Harrison, secretary; Mrs. Starett, D. Butcher, president; Mrs. Breit.
Front Row: M. Croxton, D. Friedlander, J. Dendrinos, D. Keinigsberg, A. Hawkins.

College Council

Marienthal Hall



Dorm Association



Back Row: M. Thies, secretary; B. Shepherd, vice president; M. Morgan, social chairman; Mrs. Fowler; M. Hrosky, junior transfer representative; S. Drummond, Junior transfer representative; S. Widman, treasurer.
Front Row; Mrs. Vandagriff, Mrs. Starett, J. Dendrinis, president; Mrs. Bovbjerg, Miss Bacon, R. Ricketson, assistant social chairman.

Group singing, fire drills, 10 o'clock coffee, gab sessions, and harmless tom foolery are all a part of our dormitory life. It is here we make lasting friendships, and learn to live happily with others.

We planned many activities during this year which included Hootnanny Night, a Halloween costume party, mixers, P.J. parties, holiday dinners and birthday parties. Christmas time at the dorm was very festive with the halls decked with boughs, Christmas trees and murals. Hall parties and caroling climaxed the week's activities, and our long anticipated vacation began.

In the spring we spent many hours at the beach getting a head start on our tans. Then farewell parties, exams, and suitcases began crowding the halls with last minute packing to go home at the end of another memorable year.

Town Association



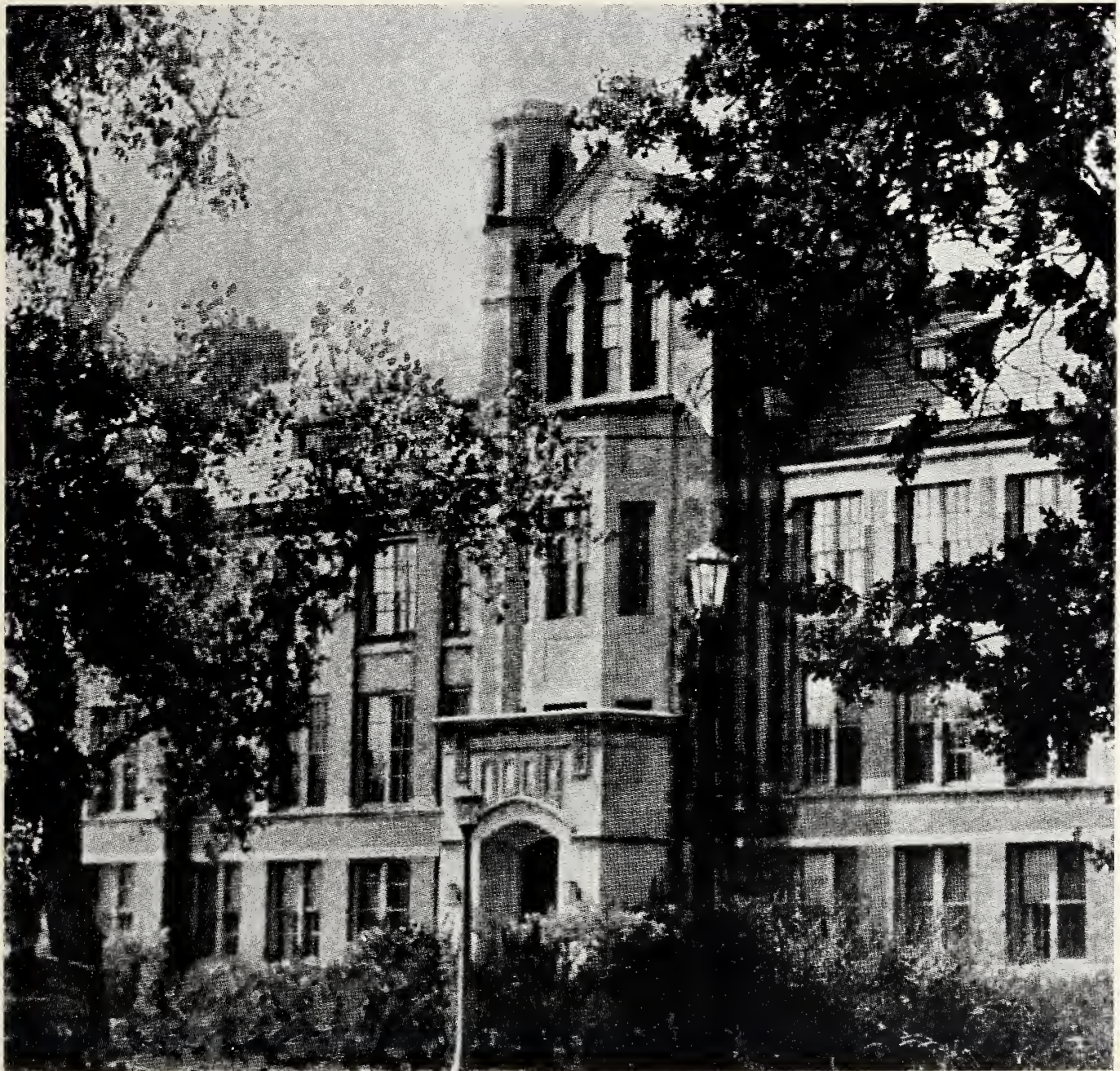
M. MINNECI, Secretary; E. GERSHMAN, Social Chairman; J. SHAPPI, President; B. LANGEFELD, Treasurer. (Not pictured are MISS SPRINGSTUN, Sponsor and B. ALBER, Vice President.

Town girls and the Student Center are companion terms. Expressions like "How about dropping over for a coke?" or "We'll need a fourth" are characteristic of the enthusiasms we have had this year in T.G.A. With the guidance of the officers we held our meetings and planned for parties and luncheons.

The September Swing started the school year out right. This was followed by the Christmas Dinner, Father-Daughter Dinner and Mothers' Luncheon. All of these activities helped to fill up our social calendar for the year.

These are the things we shall remember and from these experiences we have gained an understanding of ourselves and of our friends.

Harrison Hall





"Down, boy, down"



Leaf it to Mac.



"Oh, you kid."

Hoot Nanny Night



"I love you truly"



Hot Stuff on 3A



"What'll you have?"



The Very First Night!



"How's the Cocoa?"



"Lost your Big Sister?"



"Have Some?"

Town and Dorm



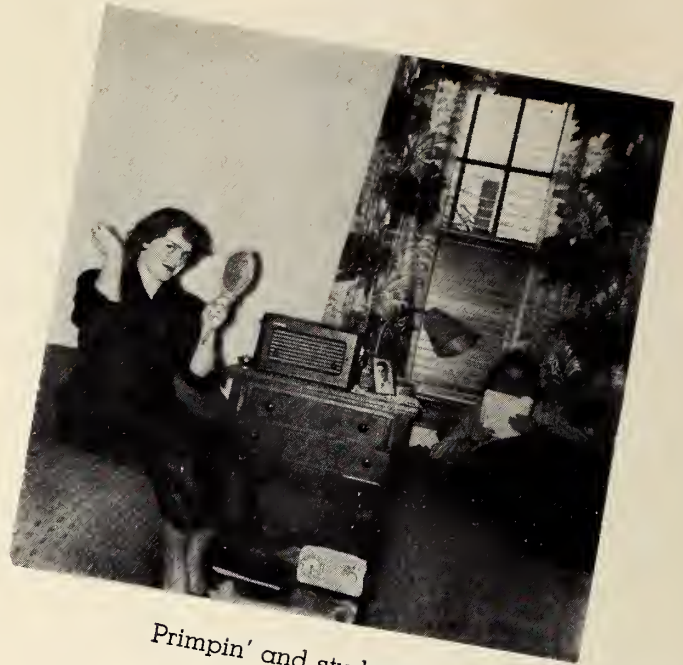
Guests For Dinner

"Hard Night, Girls?"





Those little freshies!



Primpin' and studyin'



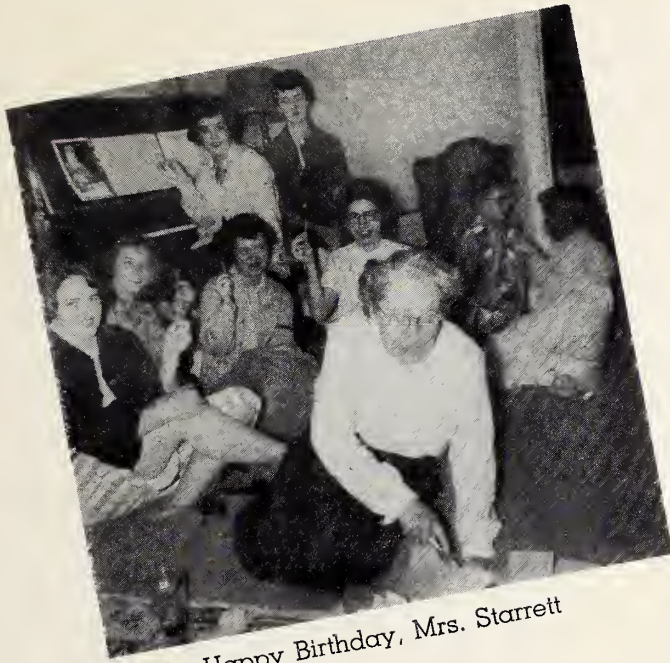
A boy or a girl?



Piles of fun!



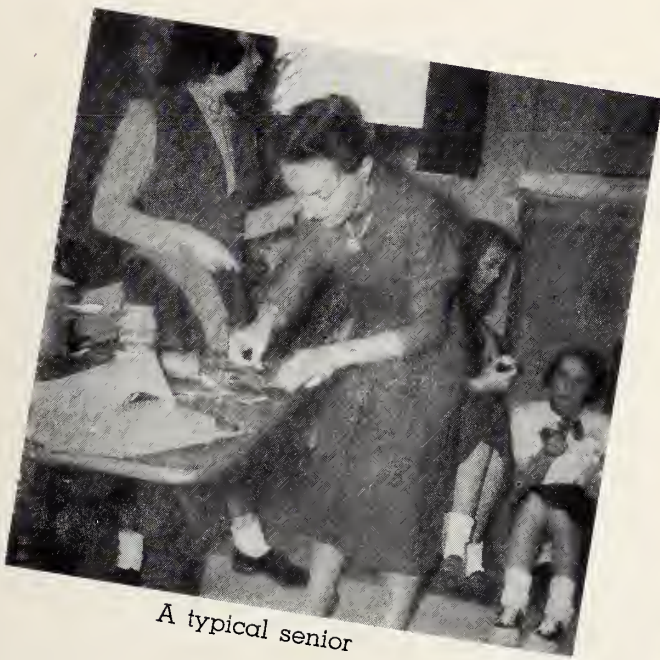
Mom's Day up



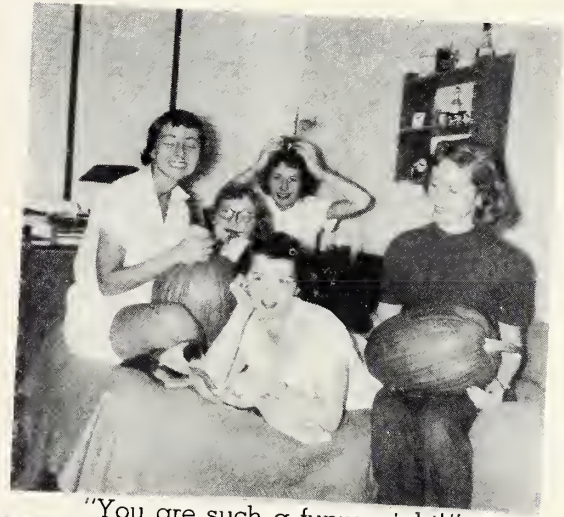
Happy Birthday, Mrs. Starrett



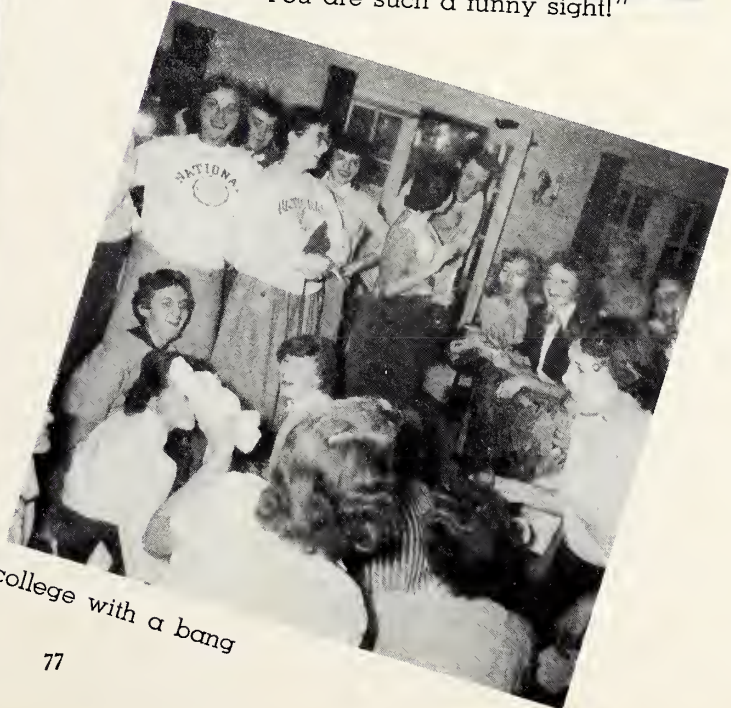
Neat as a pin



A typical senior



"You are such a funny sight!"



Starting college with a bang



Back Row: S. Kocalis, J. Hanson, J. Bjork, B. Noren, M. Thompson, V. Hieronymus, S. Drummond, M. Long, D. Bunn, D. Gallenberger, H. Vogel, L. Wartenberg, B. Potter, N. Leonard, J. Watts, R. Ricketson, P. Rhoten.
 Second Row: M. Minneci, L. Unger, R. Wolz, E. Crosson, Miss Leifeste, sponsor; C. Bacon, M. Hefter, M. Roll, A. Petihakes, G. Popp.
 Front Row: J. Dendrinis, M. Warren, G. Campagna, J. Hartter, G. Kusatsu, G. Knell, M. Reizner.

A. C. E.

We have had a very interesting and profitable year in the Association for Childhood Education. Our aim is to promote a better understanding of modern education.

The combined Christmas meeting of Y.W.C.A. and A.C.E. was devoted to making cards and yarn gifts for children. Our other meetings were inspiring as well as helpful. Of course the biggest event of the year was the convention in Denver, Colorado.

Our sponsor is Dr. Leifeste. Officers for this year were Jill Stott, president; Martha Logsdon, vice president; Judy Hartter, secretary; and Grace Kusatsu, treasurer.



Back Row: B. Handler, R. Gay, M. Lundgren, A. Hansen, G. Hackl, D. Droeger, M. Griffin, S. Binner, D. Fuhrman, N. Barnes, M. Himmelstein, E. Rye, B. Alber, M. Thies, D. Butcher, J. Christensen, A. Hawkins, E. Peterson, M. Croxton.
Second Row: R. Beal, S. Jenci, B. Langefeld, T. Ladd, M. Logsdon, J. Stott, J. Widmark, N. Burnstein, B. Harrison, D. Bjorkman, M. Thayer, W. Delbridge, H. Eilenberger.
Front Row: S. Dale, D. Levis, P. Orr, B. Kaplan, D. Bach, D. Keinigsberg, E. Warner, S. Bennet, C. Berry, A. Pohland.





Y. W. C. A.

The purpose of the Young Women's Christian Association is to strive for a better understanding of ourselves and all that lies in the world around us. In living our lives we desire to be related not only to our college interests, but to national and world affairs. We also strive for a deeper understanding of God in all phases of life.

We began our activities this year with a retreat at Walton Lodge, where we discussed religion in our lives today. In the fall we sponsored the World Student Service Fund Drive Assembly, which was built around the theme of "The Good Samaritan."

Among our achievements this year is the organization of the "Y" choir and the new weekly worship service which is held in the dormitory.

Officers for the year were Robin Beal, president; Sally Bennett, vice president; Charlotte Braun, secretary; Charlotte Berry, treasurer; Joyce Widmark, social service chairman; social chairman, Sandra Bosch; worship chairman, Gene Goller. Our sponsor is Miss Weiler.

Back Row: K. England, M. Himmelstein, G. Montgomery, D. Hoelt.

Third Row: B. Merkel, M. McKenna, J. Affleck, M. Lawrence, E. Gschwend, S. Binner, V. Runge, R. Robinson, M. Mannette, M. Thompson.

Second Row: C. Berry, S. Bosch, K. King, G. Goller, Miss Weiler, R. Beal, C. Braun, L. Freeland, S. Bennett, B. Harrison.

Front Row: L. Meisle, E. Oechsle, B. Langefeld, J. Shappi, H. Harman, C. Rains.





Dance Group

Dance group is an organization of girls who express themselves through creative dance movement. Feelings and emotion are manifested as we respond to words and music.

Early in the fall we made a very effective contribution to the children's play. We performed again at the Thanksgiving assembly by doing a solemn interpretive dance.

The Spring Festival always provides a great challenge for the group for it involves many weeks of continuous rehearsals. We all shall remember the aching muscles we had during those weeks. The festival was a big success and we were glad to be a part of it.

Our sponsor is Mrs. Duffy. Officers for this year were president, Del Keinigsberg; vice president, Eunice Gershman; secretary, Ruth Ricketson; and treasurer, Bernie Alber.

Back Row: N. Wahlen, R. Robinson, M. Montgomery, H. Neleman, R. Ricketson, R. Wolz.
Second Row: R. Beal, C. Rains, E. Gershman, M. Willis, G. Sharp.
Front Row: B. Kaplan, E. Oechsle, Mrs. Duffy, sponsor, D. Keinigsberg, L. Freeland, P. Kelly.



Athletic Association



Top Row: M. Bihlman, junior representative; A. Hawkins, chairman; Miss Challand, sponsor; D. Holmes, freshman representative.
Front Row: P. Harlan, senior representative; T. Adams, sophomore representative.

The athletic association provides time for exercise and fun through competitive play between classes and combined groups. It also provides a time for the girls who enjoy athletic activities to make new friends.

At the all college picnic we were in charge of the games. This year the picnic was held indoors but we all still had a good time.

In the brisk weather we played hockey. During the year we planned basketball and volleyball tournaments between classes.

At the end of the year we had our athletic banquet and awarded the trophies to the winners of the athletic events.

This year students from Hawaii, Guam, Japan, China, Germany, India and the United States have made the International Club's year's activities an enriching experience.

All of the informal gatherings helped us to know each other and the many countries better.

At the beginning of the year we invited Miss Neumann to be our new faculty sponsor. In December she honored all of us at a very lovely Christmas tea.

It seemed that all of us were interested in sampling different countries' foods this year. We planned several trips to foreign restaurants and what savory foods we tasted.

In May we closed a memorable year with our annual International Club dinner. All of the members look forward to this dinner and this year we again thoroughly enjoyed our last meeting.

Officers for this year were president, Dorothy Denison; secretary, Grace Kusatsu; treasurer, Nobuko Yoshida; and social chairman, Layuna Thomas.



International Club

Back Row: E. Gschwend.
Third Row: N. Yoshida, Mrs. Boybjerg.
Center Row: D. Denison, B. Alber, B. Noren, Miss Neumann, G. Kusatsu, S. Lenci, W. Ingenmy,
F. Rolston, R. Kuroda.
Front Row: L. Katsura, M. Toves.



National Staff



Back Row: Mrs. Galvarro, M. Himmelstein, M. Griffin, M. McDougle, N. Barnes, M. Lawrence.
Front Row: J. Widmark, B. Merkel, S. Bakal, P. Stewart.

In preparing for you this yearbook, the National of 1953, we have attempted to relive with you the fun, activities and experiences of your school during the past year.

Our meetings were many and long, but the results are what we have dreamed of. We hope that you will share our enthusiasm and equally enjoy the product of our efforts.

CHAFF

Our staff, which has expanded to twenty-four members this year, has attempted to effectively serve the school by relating news of importance and features of interest to all. It has been our goal to maintain the first class honor rating awarded to last year's staff.

We have initiated a workshop into our monthly meetings. At this time we have speakers who are outstanding in the field of journalism, and in this way help us to improve our paper.

Back Row: R. Wolz, J. Smith, J. Christensen, B. Karnuth, M. McDougale, S. Binner, Mrs. Galvarro, R. Robinson, C. Stinson.
Third Row: G. Goller, M. Croxton, editor, D. Keinigsberg.
Center Row: B. Bronston, D. Butcher, E. Rye, D. Ressler.
Front Row: K. England, A. Hawkins, M. Logsdon, K. King, P. Rhoten.





**CHOIR
TOUR**





Back Row: B. Karnuth, T. Ladd, P. Rhoten, V. Montgomery, D. Laadt, S. Lenci, H. Nesmann, R. McMichael, M. Lawrence, J. Affleck, M. Himmelstein, D. Hoeft, H. Sams, D. Holmes, M. Thompson.

Center Row: M. Willis, G. Sharp, M. Hefer, C. Stinson, R. Beal, H. Harman, B. Merkel, K. King, P. Eddy, E. Gschwend, B. Leon, V. Runge, K. England, L. Scitt, M. McKenna, J. Hartter, T. Adams.

Front Row: B. Taylor, L. Meisle, B. Noren, A. Ribstein.

CHOIR

The choir at National College has grown into a large organization. This year we have two extra groups which are made up of choir members. They are the Sextette and the Madrigal group.

Under the skillful direction of Mr. Cousins we have participated in many of the school activities. Our Christmas concert was outstanding. We all worked very hard to bring to the students a memorable program.

The fourth annual presentation of the "The Messiah" was again given with the Wilmette Methodist Church choir in the Christmas vespers service at the church.

The highlight of the year for us all was the first National College choir tour through the midwestern states. It was an experience that we shall never forget.

We take great pride in the success of our numerous engagements in the Chicago-land area. It was always good to see our picture in one of the newspapers along with a favorable report of our singing.

Officers for this year were president, Betty Noren; vice president, Helen Nesemann; secretary, Thelma Adams; and treasurer, Dorothy Holmes.



Back Row: P. Kelly, H. Reinertsen, B. Kern, L. Freeland, A. Wein, R. Fayer, G. Montgomery, J. Christensen, N. Sustersic, M. Lawrence.
 Fourth Row: E. Kercher, S. Binner, E. Crosson, A. Goldberg, S. Widman, C. Rains, S. Melzer, M. Himmelstein.
 Third Row: B. Kolstoe, A. Ramser, H. Eilenberger, T. Ladd, E. Gershman, M. A. Willis.
 Second Row: N. Barnes, J. Knarr.
 Front Row: M. Schultz, B. Shepherd, J. Dendrinis, J. Renier, J. Widmark.

Drama Club

The Drama Club's objectives are to encourage appreciation of theater arts through participation in productions, varied programs for meetings, and attendance at professional plays. Our group is a large one and we all enjoyed working together.

The activities consist of monthly meetings with guest speakers and programs given by the members. We certainly all worked hard to make the children's play, "The Tailormade Brownie," a success. The play was enjoyed not only at the college but also in Joliet, Mt. Prospect, Glenview and Highland Park. What fun it was to pack up the truck and leave before the sun was up to go on our tours.

In March our production was a bill of three one-act plays, three performances being given in Farrar Auditorium for adult audiences.

During the year we also enjoyed several theater parties.

Our sponsors are Miss McCaslin, Miss Healy and Mr. Zukowski. Officers for this year were president, Muriel Hefter; vice president, Jeannine Renier; secretary, Mimi Lawrence; treasurer, Mary Thies; and publicity chairman, Adrienne Goldberg.



Saints For Sale



"Tailor-made Brownies!"



Super Seamstress dept.



"Look Miss Challend, a froggie!"



"Is He Real?"



Spirit of Christmas



"They Never Had It So Good."



Mood Music



Winner Take All!"



"Cafe' Style"



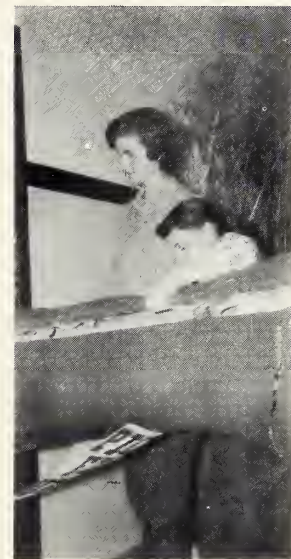
"Tea Anyone?"



Draped Shapel



They didn't need words



Tree Surgeons?



No Garters!



"Home Was Never Like This!"

YULETIDE



It's Turkey-time



An Evening 'round the Tree



She's a sly little Elf



"He's Jolly & Plump"



The Finishing Touches



Admiring a Job Well Done



Going Home Time

ASSEMBLIES



"Roll 'em, Joel!"



"Welcome, Alums"



Our Christmas Play



"From all parts"



"And further more"



Good Old Summer Time



Serious Talk



Rushing the season

Familiar



"Won't you join us?"



"Take it easy"



"Room for mine, too?"



Notes! Here comes more work

Scenes



Room for one more in Butcher's Bus



"The pause that refreshes"



Two great pals



"Have you heard the latest?"

Our



A tough ref!

Faculty



Dressed to kill



"Sittin' pretty"

SOCIAL



fireb r





One to a customer



Takes two to tango



"Conquer we must!"



Half moon & full arms



"Getting to know You"



The fleet's in



"Love Is The Reason For It All"

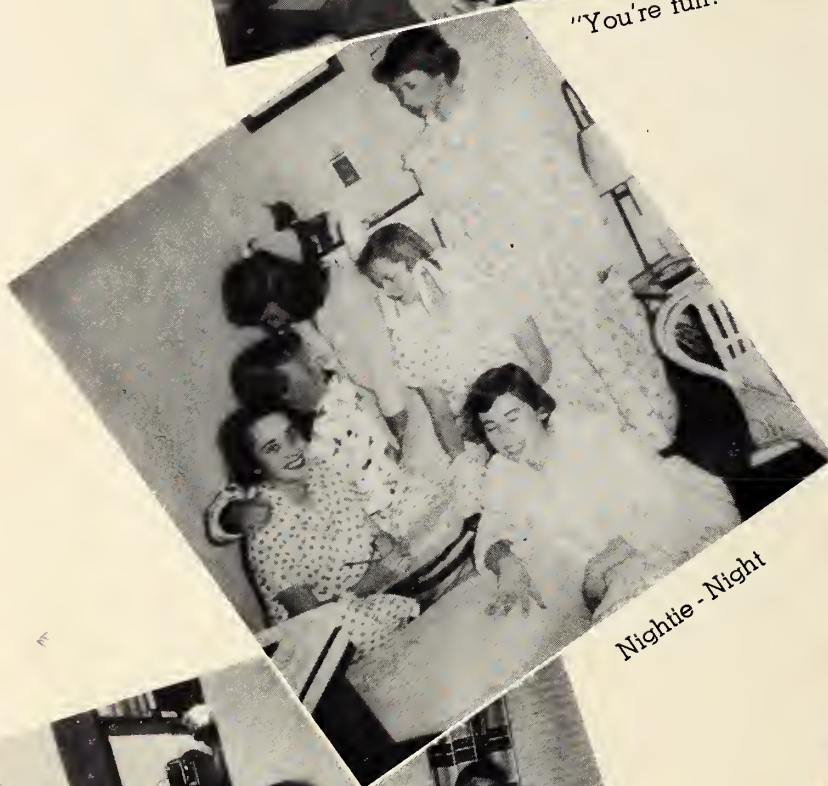
SOCIAL



"You're full?"



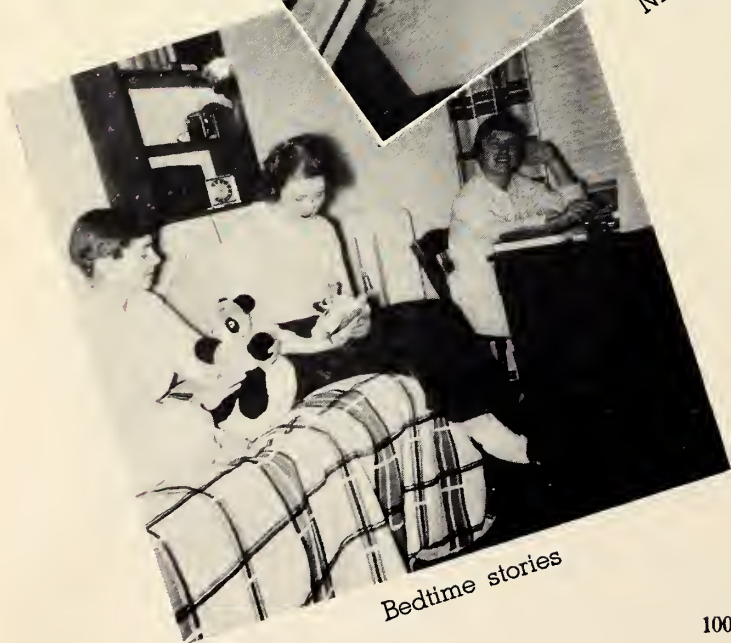
Easy does it!



Nightie - Night



Smiling Teachers



Bedtime stories



Just loafin



Our May Queen

HELEN EILENBERGER



SPRING MUSIC FESTIVAL





L. to R.: Martha Croxton, Barbara Harrison, Thelma Jane Ladd, Doris Butcher, Queen Helen Eilenberger, Jill Stott, Eunice Gershman, Joyce Shappi, Janice Dendrinis.

Our May Queen and Court



"Maybe they'd like . . ."



"Is there one for tonight?"



Posing with the new hall member



"Fourth for bridge?"



"Taka chance on a doll."

Complete school supplies
and textbooks
for all
schools

Chandler's

Fountain Square
Evanston, Illinois

NORTHWESTERN
CO-OP
STUDENT

YOUR

FAVORITE

NATIONAL

COLLEGE

ANIMALS
SWEAT SHIRT
MUG

726 ORRINGTON AVE.
EVANSTON
GR 5-2600



MUMM PRINT SHOP, INC.

Frederick C. Mumm, Pres. Edward H. Holtz, Sec.-Treas.

1033-1035 University Place
EVANSTON, ILLINOIS



Phones:

GRreenleaf 5-6900, 6901

PEACOCK ICE CREAM CO.

2004 Central Street

EVANSTON, ILLINOIS

UN 4-4700

EVANSTON BUS COMPANY

1201 Central Street

DAvis 8-1100

Wilmette 1800

UN 4-0420

NELSON

Laundry ★ Dry Cleaning

SYSTEM

1210 CENTRAL AVENUE
WILMETTE

1014 DAVIS STREET
EVANSTON



Daguerre Studios

Chicago's Leading School Photographer Since 1913

209 SOUTH STATE STREET

CHICAGO 4, ILLINOIS

PHONE WABASH 2-0526

CHICAGO'S
LEADING
SCHOOL
PHOTOGRAPHER

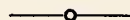
OFFICIAL PHOTOGRAPHERS

1952-1953

NATIONAL COLLEGE OF EDUCATION

***IMPROVED
OFFSET
LITHOGRAPHY**

**Sets New Standards of
PRICE and QUALITY
for YEARBOOKS.**



ESTABLISHED 1893

UNIVERSITY PRINTING COMPANY

★ PUBLISHERS OF DISTINCTIVE YEAR BOOKS ★

1410 EAST 62nd STREET--CHICAGO

COMPLIMENTS OF
**VIRGINIA
CLEANERS and DYERS**

1016 Central Street
4712 Oakton Street
UNiversity 4-4640
Skokie 3881

We Call and Deliver — Same Day Pressing

Summer Storage — Repairing

(Leo's)
CENTRAL "L" PHARMACY

"The Drug Store of Personal Service"

1020 Central Street
Phone GREENleaf 5-0912

WALKER BROS. The Home of
CHUBBY



THE DOUBLE-DECK
HAMBURGER
and Delicious
FOUNTAIN TREATS

2 STORES IN EVANSTON
CONVENIENT TO THE CAMPUS

WALKER BROS.
VICTOR - EVERETT - RICHARD

1945 Central St.
and
1740 Sherman Ave.



**WEILAND
FLOWERS**

MAIN STORE
713 Main St. at Chicago Ave. Evanston, Ill.

UNiversity 4-0878

MATHIAS WEILAND

Compliments of a Friend

"To cultivate kindness is a valuable part of the business of life."

Johnson

KEEFER & TEMPLETON

Pharmacists

2916 Central Street

Evanston, Illinois

Greenleaf 5-2214

Greenleaf 5-1980-1981

Maurice's

Quality Groceries and Meats

1018 Central Street
EVANSTON, ILLINOIS

9:30 a.m. to 5:00 p.m.
Monday thru Saturday

UNiversity 4-7770

The Little Knit Shop

1718 Sherman Ave.—2nd Floor

Evanston, Illinois

DOROTHY S. AKIN

"Say It With Flowers"

OAKTON FLORIST

1600 Oakton Street

Evanston, Illinois

PLANTS, CUT FLOWERS
for all occasions

NORTH
EVANSTON

CAMERA

AND
ART SHOP

Art and Photo Supplies
for "Making Good Pictures"

UN 4-4450

Open to 9 P. M.
Monday and Thursday Evenings

1814 CENTRAL

EVANSTON, ILL.

NELSON JEWELERS

North Shore's Oldest Jewelry Store

Over 45 years in Evanston

WE DO REPAIRING

Phone UNiversity 4-0461
1626 Orrington Ave.
EVANSTON, ILLINOIS

EVANSTON WASHMASTER

1811 CENTRAL STREET

GREENLEAF 5-9556

- Money Saving Prices
- Clothes Washed, Fluff Dried
- Flatwork Finished
- Rugs and Spreads Washed and Fluffed

Prescriptions

FOUNTAIN
COSMETICS

Elizabeth Arden, Revlon, Yardley, Old Spice and
others

Wheeler Pharmacy

1700 CENTRAL ST.

GR 5-4022 GR 5-6070

EVANSTON
GEO. B. WINTER, INC.

526 Davis Street
EVANSTON
UNiversity 4-3900

RAVINIA

WILMETTE

Quality Food Products

GROCERIES

MEATS

BAKERY

UNiversity 4-4272

*Specializing in
Watch, Clock and
Jewelry Repairing*

North Evanston Jewelry

NORMAN LARSEN
Proprietor

1915 Central Street
Evanston, Ill.

Physicians Supplies

Prescriptions Exclusively

D. S. LYMAN

Pharmacist

636 Church Street

Evanston, Illinois

Suite 306-7-8

GRreenleaf 5-3316

Corsages

Cut Flowers

Plants

Center Pieces

Funeral Designs

JIM PRESTON, FLORIST

"Flower Stylist"

Wedding Arrangements

UNiversity 4-1816

1703 Central St.

EVANSTON, ILLINOIS

Compliments of



JOHN W. WEISS, HARDWARE

1910 Central Street

Evanston, Illinois

UNiversity 4-3100

KARNE'S MUSIC SHOP

Complete Service for Musicians

INSTRUMENTS

MUSIC

ACCESSORIES

REPAIRING

INSTRUCTIONS ON

ALL INSTRUMENTS

1718 SHERMAN AVE. EVANSTON

AUTHORIZED FLORISTS

TELEGRAPH DELIVERY

Don W. Saville

LONDON FLOWER SHOP

PHONE: UNIVERSITY 4-0632

1712 SHERMAN AVENUE

EVANSTON, ILL.

Hoos' Drug Store

KEN HOOS, R.Ph.

VERN HOOS, R.Ph.

Sherman Ave. at Clark

Evanston, Illinois

Phone GRreenleaf 5-7458-9781

AUTOGRAPHS





