

1963

## The National, 1963

National College of Education

Follow this and additional works at: <https://digitalcommons.nl.edu/yearbooks>

Part of the [Higher Education Commons](#)

---

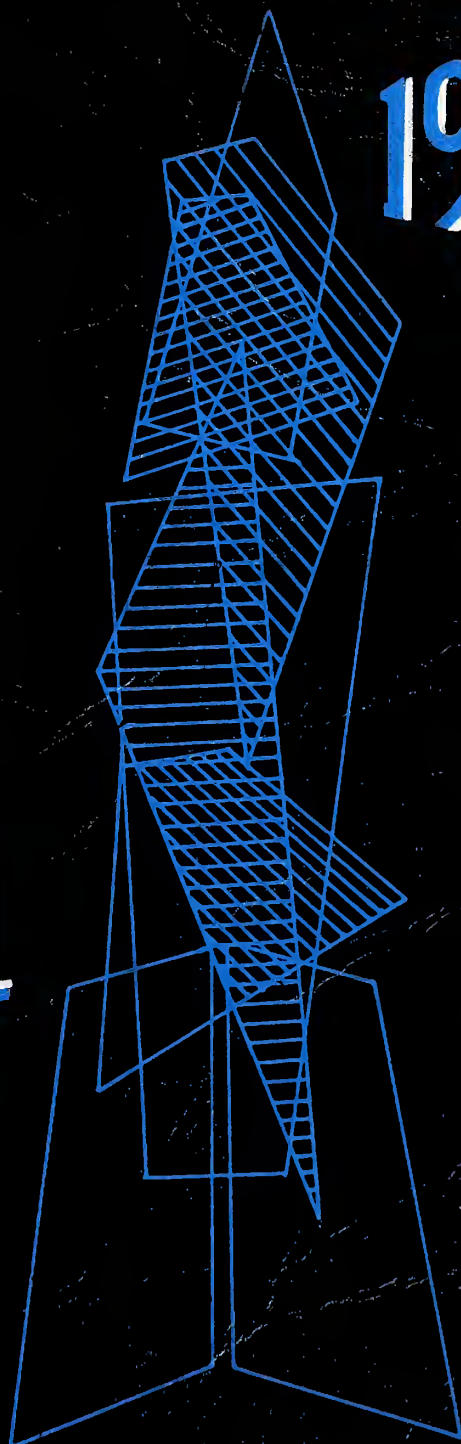
### Recommended Citation

Education, National College of, "The National, 1963" (1963). *Yearbooks*. 35.  
<https://digitalcommons.nl.edu/yearbooks/35>

This Book is brought to you for free and open access by the Archives and Special Collections at Digital Commons@NLU. It has been accepted for inclusion in Yearbooks by an authorized administrator of Digital Commons@NLU. For more information, please contact [digitalcommons@nl.edu](mailto:digitalcommons@nl.edu).

1963

NATIONAL







# FOREWORD

An age of progress, an age of struggle in which man is attempting to conquer the unknown-this is our age-the space age. And each of us is a vital force in it. The yearbook this year will attempt to show the correlation between life at National and the conquering of space.

As you turn to the different sections of the book, you will embark on a journey into space. The center of attention is a three stage rocket to which a space craft is attached. Although you will be viewing it from afar, you will feel intimately related, for somewhere along the course you will find yourself. This rocket is by no means flying aimlessly, for it has a definite destination-the culmination of each student's career.

We have chosen for our theme *in transitu* (on the way), and on the way we are, in every respect. Although the rocket reaches a destination, the destination of an N. C. E. student is unknown, for the possibilities are infinite.



# IN TRANSITU

# THE EDITORS



MARIA DEBELLA  
Editor



JOYCE HERNACKI  
Assistant Editor



GERRY LIO  
Business Editor



JOYCE GREGOR  
Photography Editor



SANDY DONKLE  
Art Editor



NANCY A BAXTER  
Advertising Editor



BEVERLY J PEARSON  
Literary Editor

1963

# CONTENTS

Foreword.....	2
Editors.....	4
Dedication.....	6
Faculty.....	12
Classes.....	22
Clubs.....	36
Special Features and Traditions.....	58
Seniors.....	80
Advertisements.....	109
Index.....	115
Acknowledgments.....	120





# DEDICATION

Because you are the purpose of National, the inspiration for every new idea, the reason for every action, and the perpetuating force behind every tradition;

Because you make life at National a pleasure with your cheerful smiles, understanding attitudes, and ardent spirit;

Because you represent the modern educators who believe in a diligent, never-ending fight for the eradication of ignorance and the maximum development of every child;

Because you believe in high standards and principles and try to lead a life that is an example for others to follow;

Because you are formulating the qualities needed for good citizens and leaders not only in our democratic society but the world as well;

We proudly dedicate to you, the student body of National-the components of our rocket and spacecraft-this yearbook for 1962-63.



North Shore Alumni Board



Alumni Secretaries

## RECOGNITION

# THE ALUMNI ASSOCIATION

We, the editors of National, take great pride in recognizing and honoring the Alumni Association of N.C.E. There are none more praiseworthy than these loyal and dedicated graduates.

From its very beginning in 1891, the Alumni Association has fostered the growth and development of National. By assuming the responsibilities of securing students and contributing financially toward their support, it continues to promote the endeavors of the college.

Each year the Alumni Association presents three honorary scholarships to deserving seniors in the names of Miss Elizabeth Harrison, Mrs. John N. Crouse, and Miss Edna Dean Baker. In addition to this, the alumni's annual gifts are placed in the alumni fund, from which the college ob-

tains additional aid in order to maintain its high standards of education. The alumni have also been very helpful to the college by donating their services as admissions counselors for prospective students everywhere.

There are approximately seventeen chapters in the United States, and over 6,000 active alumni throughout the world. They are a cheerful group that perpetuate a feeling of unity and friendship among themselves through regular meetings and other activities such as teas, luncheons, and dinners.

Once again we take with pleasure this opportunity to salute our wonderful alumni-the stockholders of National.



**IN MEMORIAM**  
**MRS. LOUISE McNAMARA**  
**WHO**  
**DIED SEPTEMBER 24, 1962**

Mrs. Louise McNamara during her eight years of service as secretary for Mrs. Pauline Galvarro, endeared herself to many students as well as the faculty and secretarial staff here at National. Her warm and friendly smile portrayed a nature that knew no selfishness. In her gay and cheerful manner, she welcomed every opportunity in which she could be of assistance. She was admired by all for her determination to persist with her secretarial duties in spite of her illness. Mrs. McNamara can best be described as an understanding friend, a diligent worker, an active civic leader, and a devoted wife.

She is survived by her husband, William E. McNamara, a retired lawyer, and a son, who is studying toward his Ph. D. degree at Massachusetts Institute of Technology. Mrs. Louise McNamara will remain in the minds and hearts of all who knew her.



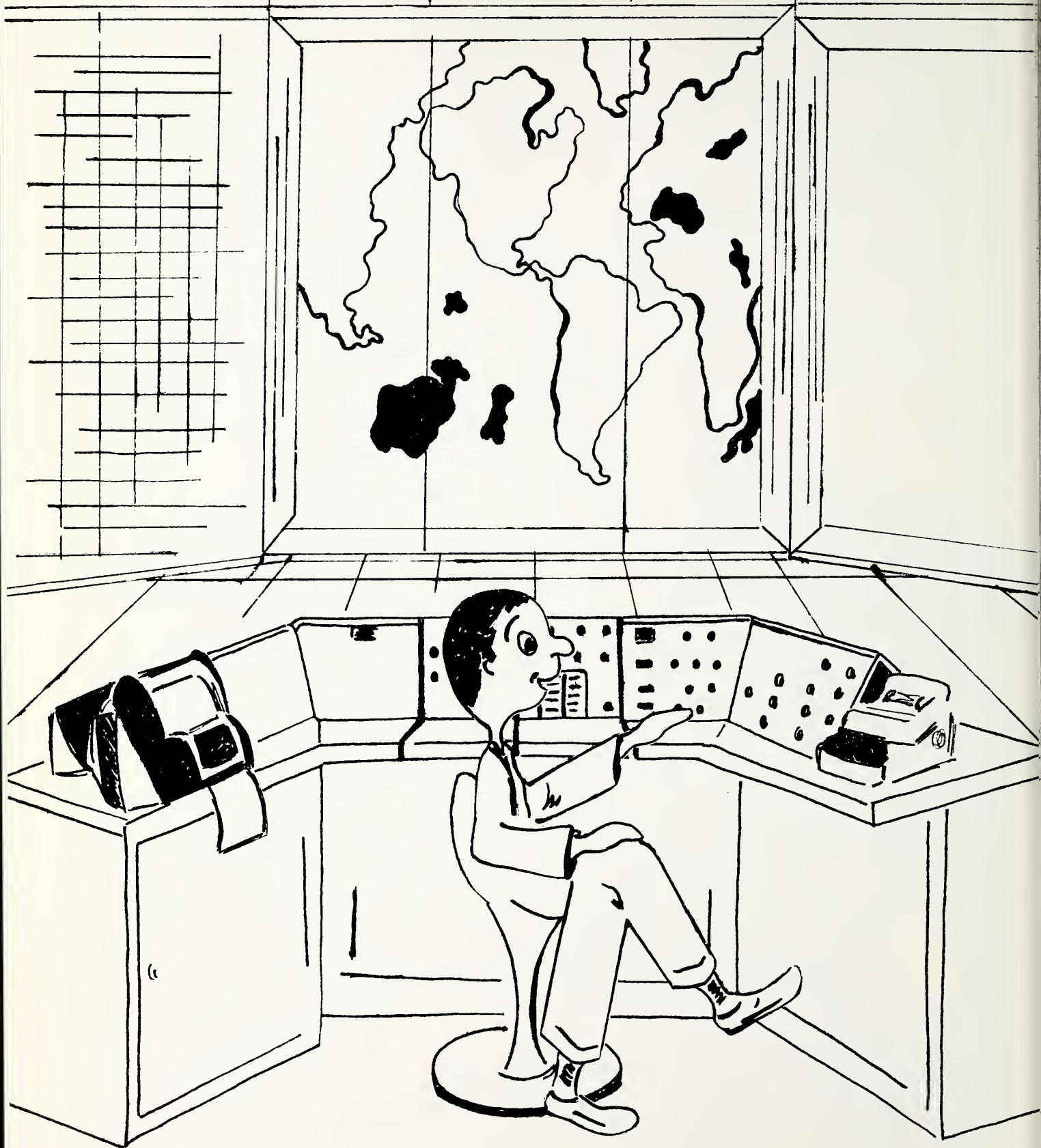
Dear Students:

Another School year is coming to a close. For some it will mean graduation from the college, for some summer school and for others vacations. I hope that your year has been a challenging one and that you have the feeling of accomplishment which comes from a job well done. For you who are graduating, a chapter is being closed in your life, but another one is beginning whether you are entering teaching or home-making. We hope that the years at N.C.E. have been worth while and that you feel a sense of loyalty to your alma mater. You now have become stockholders of our corporation and you join the large body of loyal alumni who cherish the rich heritage that is theirs and who feel that National has become a part of them. We hope that the years here have helped to strengthen your values and to build an inner strength that is basic in living today. National's deep concern for the welfare of each individual must be perpetuated.

To those of you who are not graduating but will be pursuing your college education beyond this year, we give a particular challenge. As members of the student body you have a responsibility to the college and to your parents. We hope that you are giving your best in return for the rich opportunity and privilege that are yours as you complete your preparation for the great profession of teaching. Accept the challenge. By fulfilling your obligation you will help to strengthen the foundation on which our education program is built.

Sincerely yours,

K. Richard Johnson, President





# FACULTY

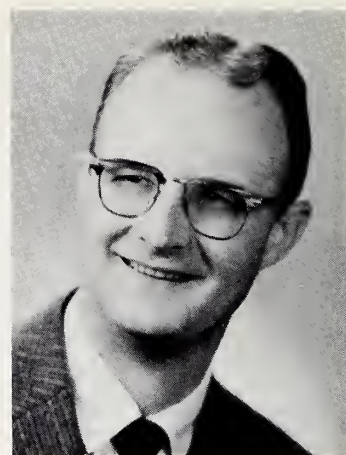
The faculty-the men and women behind the scenes-these are the technicians, engineers, and experts who are making this flight possible. The rocket now stands on the launching pad, and the countdown has begun. The most important work is just starting, for the technicians must now successfully launch this rocket and guide it on the way.





AGNES ADAMS  
M.A., Ph.D.  
Education

ELIZABETH BRANDT  
M.Ed., B.A.

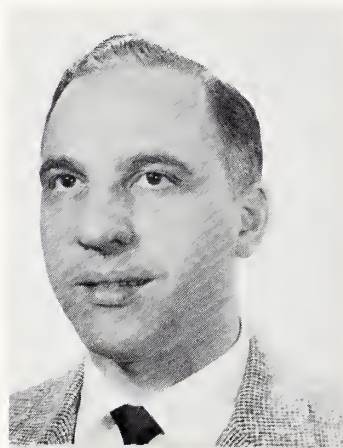


CALVIN CLAUS  
M.S., B.A.  
Psychology



HELEN ASTIN  
Ph.D.  
Psychology

EUGENE CANTELUPE  
Ph.D., M.F.A., B.A.  
Humanities

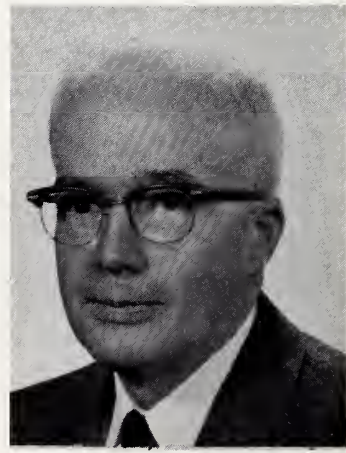


LLOYD COUSINS  
M.Mus., B.Mus.Ed.  
Music



JOSETTE BERKLAND  
French

HELEN CHALLAND  
Ph.D., M.A., B.E.  
Science



JOHN DAUGHERTY  
M.A., Sc. B.  
Science

**IONE DAVLIN**  
A.B.  
Dorm

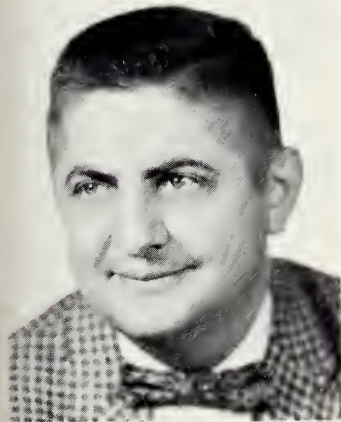


**MARVIN ENGLISH**  
Ph.D., M.S., B.M.  
Education

**DAYTON GRAFMAN**  
M.Mus. B.Mus.  
Director of Admissions



**DON DINKMEYER**  
Ph.D., M.A., B.S., B.P.E.  
Psychology



**PAULINE GALVARRO**  
PhD., M.A., A.B.  
Dean of Students

**DOLORES GRANSTRAND**  
M.Ed., B.E.  
Education

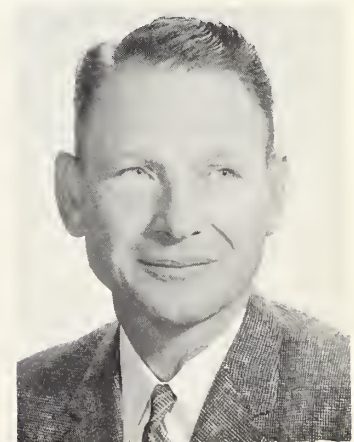


**JEAN DUFFY**  
M.A. B.S.  
Physical Education



**VIRGINIA GORMAN**  
M.A., B.E.  
Education

**EDWARD HARDY, JR.**  
M.A., B.A.  
Physical Education





**ROBERT HARTMAN**  
M.S., B.S.  
Registrar

**ROBERT KIDDER**  
Ph.D., M.A., B.A.  
Speech



**MARGARET LINDMAN**  
M.A., B.E.  
Speech-Drama



**KATHERINE HUDSON**  
Education

**JEAN KRAFT**  
PH.D., M.S., B.S.  
Science



**ETHEL MacINTYRE**  
M.A., B.E.  
Education



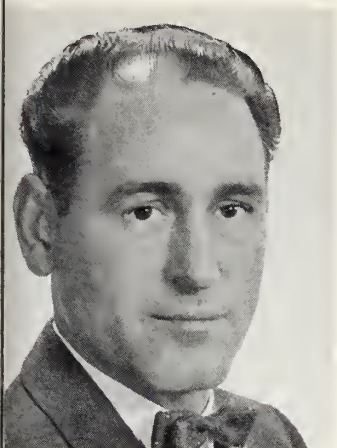
**MAJORIE HUNTER**  
M.Mus., B.Mus.  
Music

**BERTHA LEIFESTE**  
Ph.D., M.A., B.A.  
Education



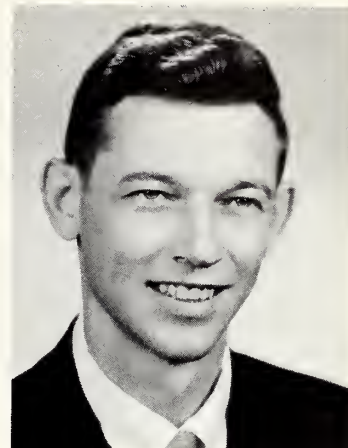
**HELEN MACKINNON**  
M.Ed., B.A.  
Education

**KHEL MARKEN**  
B.S.  
Business Manager



**PHYLLIS NEULIST**  
B.A.  
Social Science

**RICHARD PANEK**  
M.S., B.S.  
Research



**LINFORD MARQUART**  
A.M., A.B.  
Social Science



**MARY-LOUISE NEUMANN**  
B.S. in L.S., B.A.  
Library

**RUTH POWERS**  
B.S. in L.S., B.A.  
Library



**AVIS MOORE**  
M.A., B.A.  
Social Science



**ALBERTINE NOECKER**  
M.S., B.S.  
Education

**JANET REES**  
Ed. D., M.A., B.Ed.  
Education



ELIZABETH SPRINGSTUN  
Ph.D., M.A.  
Education



LEWIS TROYER  
Ph. D., B.D., B.A.  
Dean of the Graduate School

GERTRUDE WEINSTEIN  
B.S. in L.S., A.B.  
Library



WREN STALEY  
Ph.D., M.A., B.A.  
English



RUTH STUHR  
A.M., A.B.  
Social Science

DORWIN ZAPPE  
M.A., B.E.  
Education



MARGARET VAUGHAN  
M.E., B.E.  
Education

# SHUTTER

## SHY

## FACULTY

Frank H. Argelander  
C. Clyde Arnspiger  
Edward Ball  
Robert H. Bauernfeind  
Donald Boyer  
Virginia Byington  
Newton Calhoun  
Robert Christensen  
Martha Clausen  
Cecilia A. Cyrier  
Harold A. Delp  
Irene Drennan  
Lucy Driscoll  
Sara Ewald  
Virginia Field  
Henry Ford  
Edna L. Forrey  
Janet Freund  
Mary Gallagher

Doreen Hanck  
Sylvia Hinshaw  
Lawrence F. Hubbell  
Jean Joboul  
Sylvia Landsman  
Victor Lebow  
Elise Pike Lerman  
John Malach  
Lola May  
William Nichol  
Mary Pietz  
Mary Pope  
Majorie Quimby  
Roslyn Rensch  
Ida Simmons  
Bertha Stavrianos  
Arthur Stunard  
Clifton Witt  
Ellen Zinn



**FUNNY  
FUNNY  
FACULTY**





## THE GRADUATE SCHOOL

In these days when more and more states are requiring five years of preparation for full certification as an elementary teacher, graduates of National College of Education are finding more than ever valuable the fine M.Ed. programs offered at the college.

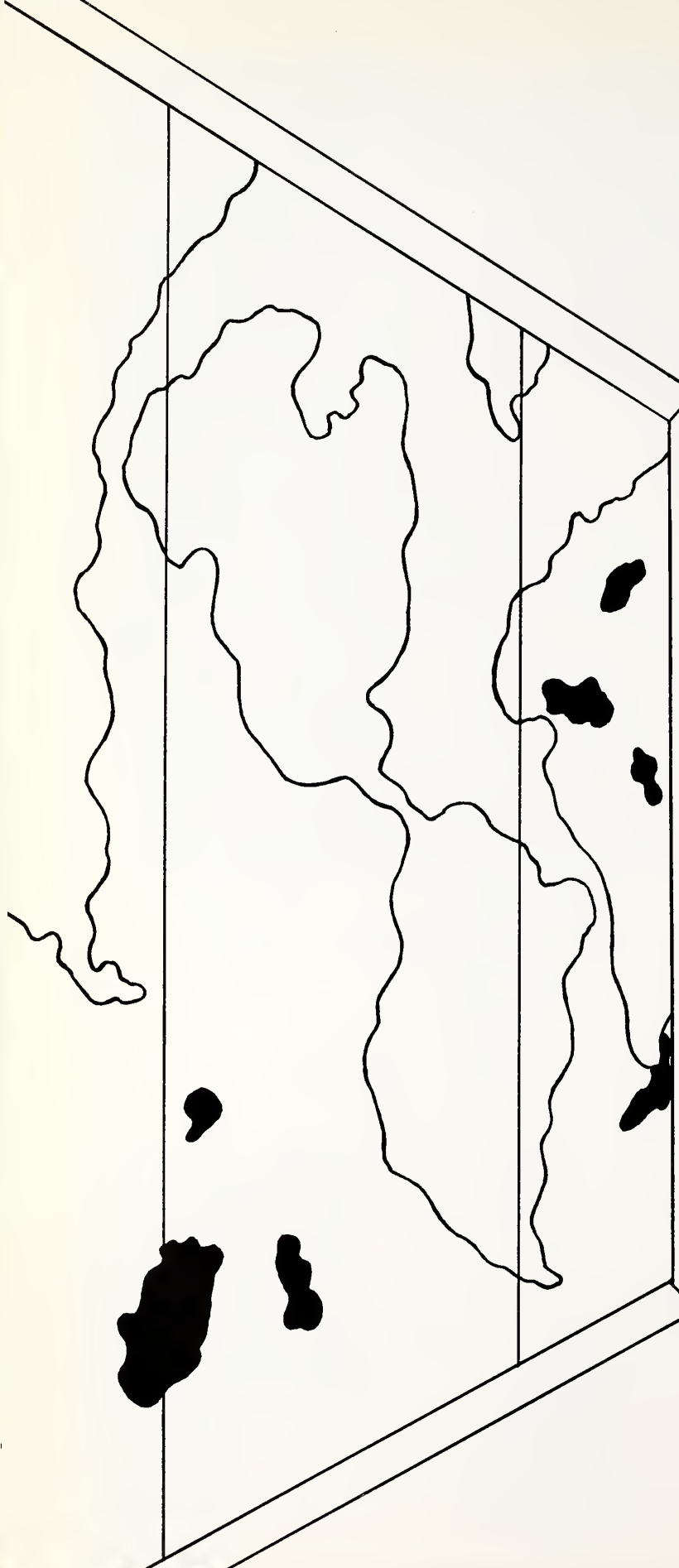
Following the pattern established a few years ago of subdividing the graduate school curriculum according to special areas of concentration, the Graduate Council added a program in guidance and counseling in the elementary school during 1961-62. This brings to seven the number of such specializations possible.

The program in special education for teachers of the mentally retarded is now in its second year. In connection with this program a two-summer curriculum recommended by the State Department of Education to meet certification requirements was introduced in the summer of 1962.

Fifty-eight students received their M.E.d degrees in 1961-62.

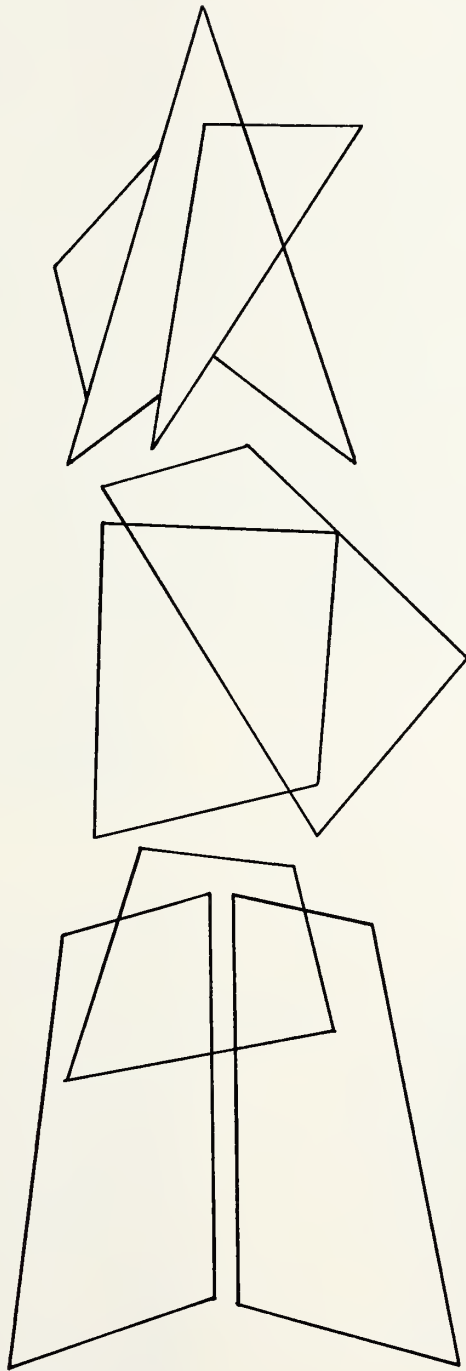
Lewis Troyer  
Dean of The Graduate School





### Classes

The Freshman, Sophomore, and Junior classes compose the three stages of the rocket. As it takes off and begins to gain altitude, certain stages will be released. As each stage is dropped, however, another ignition is begun and an additional boost is given to the remaining stages. With this added assistance the rocket receives the power to continue on the way toward its all-important destination.



U  
L  
A  
N  
S  
U  
S  
U  
S  
U  
S  
U



E. Mensing, social chairman; S. Miller, treasurer; G. Dorsey, vice-president; E. Santucci, president; T. Hart, secretary.



W. Wastcoat, G. Weinstein, M. Pike, D. Sundstrum, K. Mc Govern, T. Hart, S. Cooperman, W. White, R. Silverman

## FRESHMAN CLASS OFFICERS AND CABINET



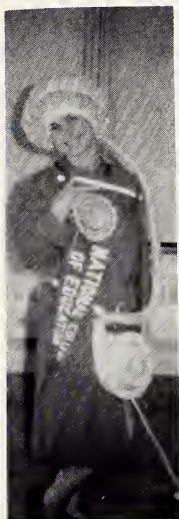
Great way to dress for C. C.



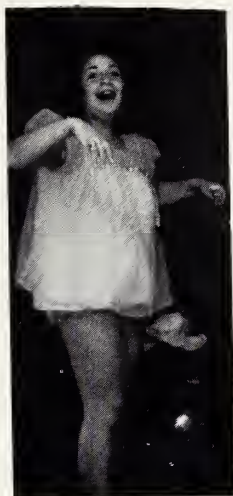
7 Vodka Sours, please!



Does she? What?



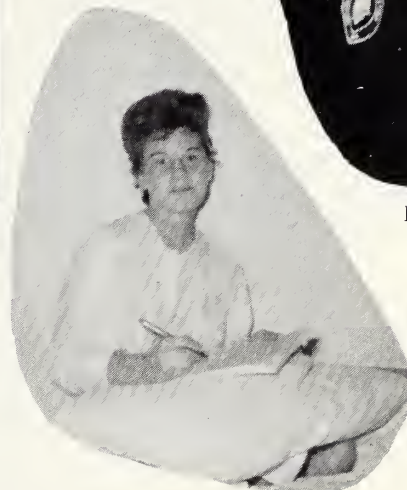
I carry it  
where ever I go.



I should  
have  
danced all  
night.



Hike!!



Take a letter, Miss Jones.



Going baby sitting???



I get the desk  
tomorrow night.



E. Mensing, B. Laubenheimer, S. Greenberg, L. Levine, L. Zwilling, R. Pierce, H. Moore, D. Hahn, J. Strong, D. Tillesch, B. Brauer, L. Manley, D. Sundstrum, C. Gilszmer, M. Goodman, S. Durkin, J. Pearlman, M. Adams, J. Rapperport, G. Dorsey, M. Bromund, C. Stuber, L. Korsh, D. Sitnick, A. Katcher, M. Owens, C. Starr, C. Pawloiwski, C. Kantor, S. Mesengale, K. Dudley, P. Grover, P. Smiley, W. White, G. Weinstein, B. Ames (Top to Bottom)

## CLASS OF 1966



S. Graf, J. Kittsley, C. Cahn, L. McFate, C. Seeley, E. Fisher, K. McGovern, L. Belding, D. Lillie, L. Hannah, G. Kirtpatrick, R. Silverman, J. Super, J. Watkins, S. Goldstein, K. Williams, L. Kabumoto, L. Readaker, G. Farmans, E. Terry, E. Santucci, H. Lee, L. Zabel, T. Hart, D. Houghton, J. Davis, M. Bodie, L. Smejkal, V. Lewis, J. Schmidt, K. Weil, B. Osher, S. Heartland. (Top-Bottom)



J. Wojnicki, G. Cody, R. MacAruther, B. Atkins, S. Dempsey, S. Cooperman, E. Goodman, J. Schroder, S. Miller, J. Tierman, M. Lombardi, B. Gill, L. Marrone, J. Borenman, F. Elliott, E. Cohn, W. Westcoat, M. Reimer, J. Bond, K. Hirota, M. Pike, S. Ruzansky, A. Rowe, T. Dubsky, B. Rotdam, P. Hayna, I. Clements, C. Caparelli (Top to Bottom)

## FRESHMAN CLASS

Under the careful direction of Mr. Claus, class sponsor, and the officers, the freshmen launched into their first year at N.C.E. Activities included the traditional tree-trimming party with the seniors in December and the Freshman Dance in February. Many plans for the future will help to enrich their remaining years at N.C.E. The spirit and enthusiasm they have shown will help them to go to even greater heights.



L. Fisher, secretary; J. Karlin, social chairman; J. Nakamura, treasurer; P. Baker, president; G. Kiffman, vice-president

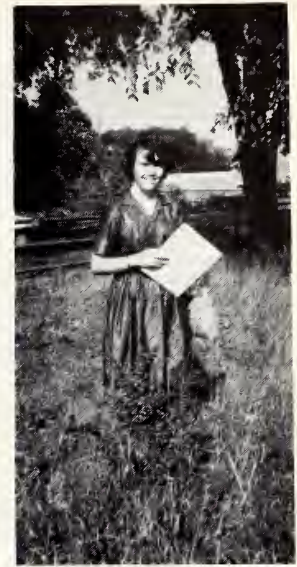


S. Mc Lean, I. Tavai, S. Stoltz, C. Groves, G. Herzau, L. Lotti, G. Sanders

## SOPHOMORE CLASS OFFICERS AND CABINET



My group had 75% fewer . . .



Comin' thru  
the rye!



He didn't?  
Your what?  
Your where?



Maybe I could jump  
over. But then she  
might fall off. Say!



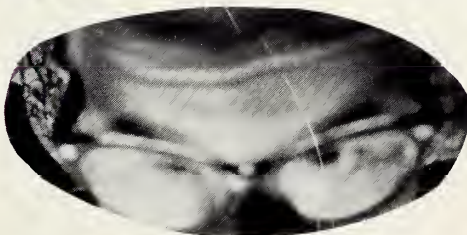
I want a mortar  
board.



Room check?



You have a caller!!



You can't  
have it!!



Ooh! That penicillin  
shot.





J. Kassmer, W. Weinrich, K. Hunter, S. Pearlman, J. Werner, P. Lekas, B. Kree, S. Stoltz, S. Daleo, U. Charla, B. Wittles, M. Testwuide, J. Shenfeld, M. Moore, S. Falo, I. Tavai,

B. Okun, B. Warren, L. Kunihisa, G. Kincaid. (Top to Bottom)

## CLASS OF 1965

F. Nelson, J. Tobor, B. Lissmer, S. Elliott, L. Petrone, E. Lewis, M. Pasch, H. Desatnick, C. Abrahms, B. Pearson, M. Alsover, S. McLean, J. Mehlsak, J. Karlin, J. Ward, M. Wro-

bel, V. Clark, A. Knight, J. Nakamura, C. Groves (Top to Bottom)





A. Freier, P. Baker, P. Jacobson, G. Kiffman, K. Sullivan, L. Fisher, M. Wilson, L. Smith, K. Roock, G. Polovina, G. Sand-

ers, L. Berger, P. Smith, M. Meyer, J. Matavosky, B. Scharf, C Ruland, M. Mabes (Top to Bottom)

## SOPHOMORE CLASS

The Sophomore Class, as the second stage of ignition, forged ahead under the guidance of Dr. English and Pete Baker. The class of "ambition" began National's social program with an "Enchanted Evening", the traditional sophomore mixer. As the rocket continued to make progress, so did the frolicsome class. Their fun-packed agenda included class parties and editing the National directory. Finally the climax of the year was reached as the class participated in the traditional graduation daisy chain. As the second stage of the rocket soared higher, so did the progress of the Sophomore Class.



M. Zlotnick, social chairman; M. Reznick, president; D. Muccianti, secretary; P. Colburn, vice-president; K. Otten, treasurer.



G. Lio, D. Travetto, B. Wasko, B. Soloway, B. Grant, J. Giffith

## JUNIOR CLASS OFFICERS AND CABINET



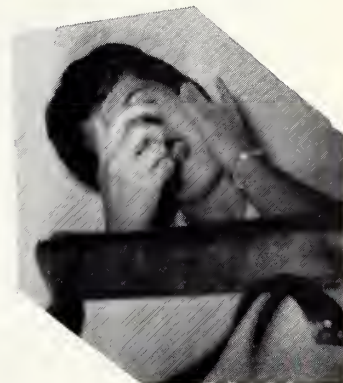
What's Up Doc?



Peek-a-boo!

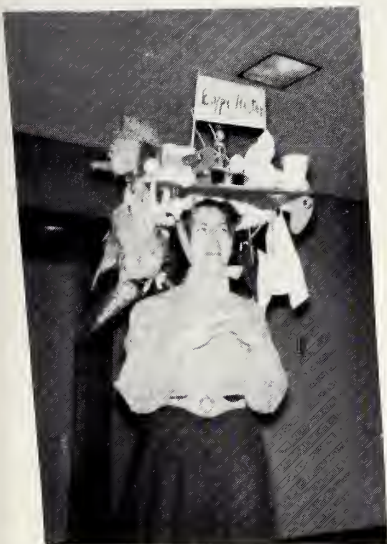


Winkin', Blinkin' en Nod!



Where's that contact??

# JOLLY JOLLY JUNIORS



Isn't it the silliest??



Please don't eat the...



Music Ed. ??



Cheese to Please

Let's TWIST!!!



Afraid of dyes, Fed up. . .



S. Meisenberg, A. Hanchrow, D. Dienner, J. Erickson, P. Snow, A. McCarthy, S. Feinberg, L. Lanoff, T. Sheehan, L. Nahin, B. Snyder, E. Lodeski, M. Wright, C. Abrew, M. Reznick, S. Phillips,

L. Rhines, C. Giraldi, P. Kaonohi, E. Calder, M. DeBella, D. Mucianti, N. Lewis, M. Stafholtz, M. Smith (Top-Bottom)

## CLASS OF 1964

C. Beckerman, C. Naiman, M. Sievers, H. Obenhaus, Y. Bunster, D. Brockman, S. Becker, L. Jentzen, L. Raymond, J. Anderson, G. Shorr, L. Coniser, M. Daniels, C. Czys, J. Lipson, P. Rosen-

berg, D. Steinert, D. Travetto, G. Lio, M. Neuman, L. Holbrook, M. Ward, C. Wortham, J. Hernacki (Top-Bottom)



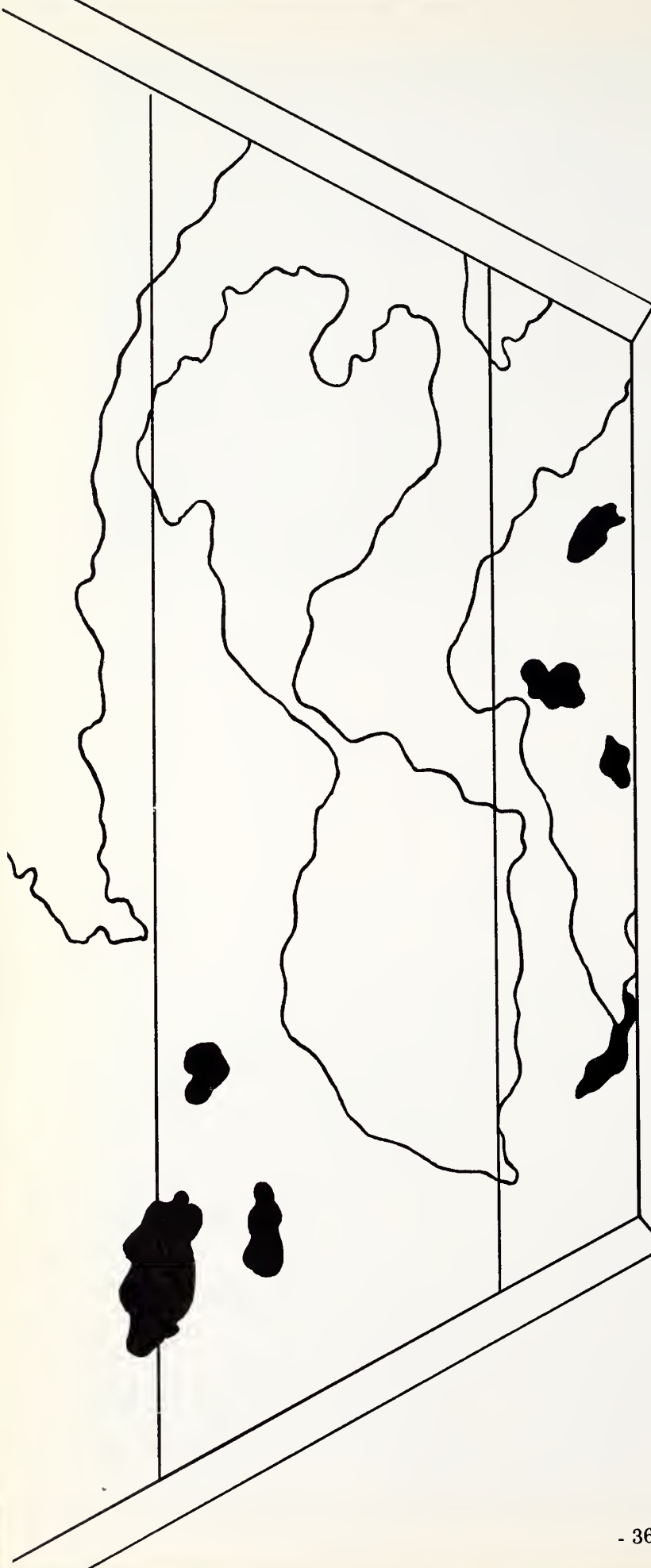


H. Salpeter, J. Gregor, P. Colburn, D. Rea, C. Owen, C. Davies, S. Donkle, G. Poitras, D. Grzybowski, K. Otten, J. Olson, J. Giffiths, J. Hauser, J. Weiss, K. Kreutzig, M. Zlotnick, B. Wasko, G. Schartz, M. Alberts, B. Soloway, M. Margolis, C. Parkhurst, F.

Chapman, K. Fabri, J. Metten, P. Osajda, P. Kjeldsen, G. Gilberts, S. Grindley, B. Grant, L. Rydall, N. Kahn, B. Shaymon, I. Steinberg, G. Madsen (Top-Bottom)

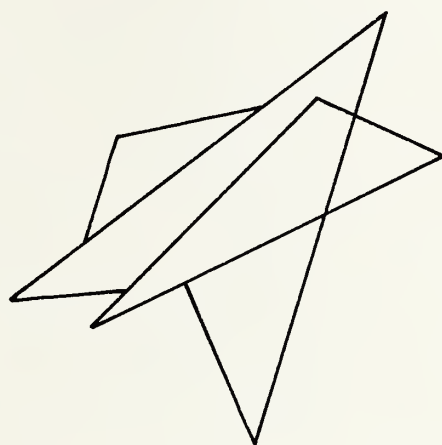
## JUNIOR CLASS

The juniors, or "Motley Crew," as they are often called, are well on the way with money-making projects, their main activities this year. They have sponsored bake sales after Christmas and spring vacation, a taffy apple sale, and also a candy sale. Why so money conscious? They sponsored the Junior-Senior Luncheon and joined with the seniors to present the Junior-Senior Prom in May. Under the direction of Dr. Cantelupe, class sponsor, and Myra Reznick, president, the class zoomed on through the year.



## Clubs

The rocket while on the way requires several course corrections in order to assure perfect orbiting of its spacecraft. Comparable to this are the corrections or guidance that is essential for the complete development of each student. At National the student body is provided with many such aids for improvement, of which social guidance is a significant one. The clubs and organizations with their varied programs furnish the opportunities for this necessary social development.



U J K M S





Back: W. Wastcoat, K. McGovern, P. Baker, Mrs. Galvarro, G. Weinstein  
Seated: M. Daniels-treasurer, M. Karras-president, R. Popielarz-vice-president, L. Sharpe-secretary  
Front: T. Hart, M. Reznick



## COLLEGE COUNCIL



Back: B. Frost, J. Skoglund, J. Hosein, E. Belzer, J. Giffiths, G. Polovina  
Seated: M. DeBella, C. Groves, L. Clayton, M. Lowenfeld, P. Kaonohi  
Front: S. Stoltz, E. Calder

As one of the main course correctors, College Council, the student governing body, has the purpose of directing student activities and promoting faculty and student cooperation in maintaining standards, and insuring understanding of the issues confronting students. Its members are representatives of the graduate school, the four college classes, clubs and organizations, and the faculty. The Council is a training ground for individual growth, responsibility and understanding of both college and international problems. It provides an opportunity for all students to move on the way toward a more democratic way of life.



G. Weiner, M. Daniels, M. Karras, A. Robbin, K. Feldberg, C. Knight, E. Sharpe, E. Belzer, U. Holzrefe.



## KAPPA DELTA PI

The educational honor society, Kappa Delta Pi, of which National's is the Theta Eta Chapter, aims students for higher and better spheres. The purpose of this highly sensitive instrument used for major course accuracy is to encourage high professional, intellectual, and personal standards, and to recognize outstanding contributions to education. The operating members must rank high in scholastic ability and are scientifically selected from junior and senior classes and from the Graduate School. Mr. L. Marquart, faculty adviser, and Ursula Holzgreffe, club president, served the organization in the controlling positions of chief aviators.



K. Haarvig, G. Polovina, P. Baker, J. Gregor, S. Coll, G. Kiffman, L. Fisher, B. Scharf, T. Sheehan, N. Wehrli, M. Lowenfeld, M. Karras, E. Belzer, R. Popielarz, M. Reznick

## AMBASSADORS

Those always ready to meet and greet new members aboard our space ship are the Ambassadors. All present at the new and prospective students' teas, Ambassadors take those interested on guided tours of the campus and answer any questions which they have. Ambassadors also extend their orbital paths to high schools, where they inform students interested in teaching about N.C.E. The chief faculty technician of National's official hostesses is Mr. Grafman.





R. Popielarz, G. Kirtpatrick, J. Super, P. Smiley, J. Strong, L. Levine, Mrs. Galvarro, M. Meyer, S. Greenberg, M. Mabes, M. Owens, J. Weiss, N. Lewis, S. Daleo, L. Marrone, B. Osher, C.

Abrew, J. Willson, B. Grant, M. Pike, S. Smejkal, K. Williams, M. Lombardi, E. Goodman, J. Hernacki, J. Gregor, M. DeBella, N. Baxter, G. Lio

## NATIONAL



Producing the 1962-63 yearbook has been an exciting challenge for the editors and staff of National. In this space age, an age of advancement, an age of speculation in which we are attempting to surmount and overcome the unknown, our challenge has been the presentation of an analogy between life at National and the conquering of space. It is with pleasure and a sense of accomplishment that we, the yearbook staff, present your book full of memories. We have attempted to record in pictures, copy, and art, all of the events of this school year. We hope that it will serve you, the students and faculty, as a pleasant reminder of your fun-filled days at National. It is our sincere wish that this yearbook has been *in transitu* (on the way) to satisfying you.



P. Snow, F. Zelman, S. Grindley, M. Wilson, L. Fisher, M. Mabes, B. Pearson, B. Dorenberg,  
N. Lewis, B. Scharf, Mrs. Zinn, G. Polovina, J. Borneman



## CHAFF

As our rocket moves through its predestined course, Chaff is one of the most effective and influential tools of communication. As the campus newspaper, its purposes include: presenting current news of interest to the student body and faculty, speaking the truths and facts when reporting this news, and challenging readers with new and provocative information and ideas that will stimulate some creative and critical thinking. Through the detailed code work of Georgia Polovina and Mrs. Zinn, the communication is kept free, active, and direct, assisting the rocket while on the way to aim straight and reach its destination.



K. Fabri, B. Butterworth, M. Meyer, P. Colburn, P. Kaonohi, V. Vespa, Mrs. Curtiss, Mrs. Davlin, M. Karras, M. Lowenfeld



## DORM ASSOCIATION

Dorm Association, with housemothers Mrs. Curtis and Mrs. Davlin and president Marti Lowenfeld, offers growth and guidance to the residents of the dormitory through social activities and intellectual stimulation. Social activities began with the Big and Little Sis dinner, mixers were held throughout the year, and the activities culminated with a Hawaiian luau. Intermingled with social functions were lectures, discussion groups and book reviews held in the Rec room.



A. Meimark, C. Beckerman, Miss Springstun, J. Hosein J. Anderson



## TOWN ASSOCIATION

Town Association was off to a flying start this year with a Big-Little Sister picnic soon after school began. In October, the town girls joined those at the dorm for Hoot Nanny Night. Then came the Christmas dinner and the family dinner in the spring. With Miss Springstun as sponsor and Juliette Hosein, president, this club served as the main means of correction for the town students.





E. Gose, M. Pike C. Beckerman, L. McFate, L. Hannah, C. Seeley, D. Brockman, M. Wilson, B. Bauer, B. Laubenheimer, E. Mensing, S. Graf, H. Kendall, B. Johnson, D. Sundstrum, F. Chapman, S. Highstone, J. Gregor, M. Smith, M. Moore, G. Herzau, B. Gill, J. Ward, L. Sharpe, W. Wastcoat, M. Bronmund, S. Heartlein,

M. Daniels, M. Meyer, G. Polovina, B. Ames, F. Elliott, J. Skoglund, S. McLean, B. Warren, M. Ward, S. Stoltz, J. Super, D. Cohen, G. Kirtpatrick, B. Snyder, J. Youngs, B. Miller, P. Kelsen, N. Sears, M. DeBella



## CHOIR

The choir zoomed on the way with a whirl of performances beginning with the Christmas season. For December they presented the "Magnificat" with the choirs of the Wilmette Methodist Church and Bahai Temple. They then sang at the first Baptist Church, Rogers Park Church, and Great Lakes Naval Hospital. Mendelssohn's "Elijah" was presented in the spring and the choir participated in the scholarship assembly in May.



G. Girdali, P. Snow, J. Schmidt, J. Kittsley, B. Soloway, A. Rueckert, C. Davies, Y. Bunster, K. Otten, F. Chapman, C. Hedlin, F.

Zelmar, J. Super, I. Steinberg, E. Maglaya, B. Fisher, M. Lombardi, M. DeBella, E. Calder, M. Binder



## M.E.N.C.

MENC-Music Educators National Conference, with Miss Hunter as sponsor and Elaine Calder as president, is an organization which gives members the opportunity to move on the way in the teaching of music. This is made possible by the actual participation of members in programs, demonstrations and discussions held by MENC.



C. Owen, B. Mensing, G. Cody, R. McArther, D. Plotkin, D. Brockman, L. Jentzen, G. Alberini, N. Wehrli, S. McLean, R. Pierce, M. Daniels, M. Binder, F. Zelman, G. Madson, S. Heartlein, D. Haha, C. Cahn, M. Goodman, M. Lieberman, V. Jones,

Mrs. Lindman, Dr. Kidder, A. Henderson, B. Ames, G. Kincaid, N. Lewis, H. Lee, M. Moore, J. Karlin, C. Pawlowski, T. Dubasky, C. Capparelli, N. Baxter



## DRAMA CLUB

All the dramatic activities and entertainment at N.C.E. are either sponsored by or closely affiliated with Drama Club. The monthly meetings serve as a training ground for the club activities. The club members work together and plan activities for future college events. Each member receives ample experience by performing informal improvisation scenes within each group practice. After much rehearsal the group makes its debut in the annual children's school play. Through this club each individual has the opportunity to learn and practice the basic skills of drama. This course corrector provides a means for self-expression and creativity.



J. Ward, S. Ruzansky, M. Daniels, G. Kirtpatrick, G. Kincaid, G. Alberini, H. Wolfman, L. Clayton, L. Shape, D. Dienner

## DANCE GROUP

Like a rocket, dance group under the direction of Sibyl Shearer, "artist in residence," revolves and takes its position as one of the creative art groups on campus. The guidance of its sponsor, Mrs. Duffy, and club president Eileen Sharpe keeps it on course as the members spend their time perfecting simple as well as complex technical routines. After many rehearsals and various excursions to visiting ballet groups the club's activities reach their peak at the spring choir-dance assembly. Through this group each individual contributes in his own way to the creativity of society.





L. Rosenberg, M. Garfield, T. Castiglioni, P. Smiley, M. Lieberman, M. Owens, J. Schmidt, L. Abrams, Miss Adams, T. Sheehan, P. Snow, C. Gilszmer, J. Metten, K. Resnick, J. Mehlsak, P. Hayna, C. Knight, F. Elliott, E. Maglaya, M. Binder, J. Willson,

J. Werner, B. Pearson, J. Cottier, M. Gosogess, D. Muccianti, C. Giraldi, S. Phillips, M. Karras, B. Cohen, G. Gillman, I. Tavai, G. Gilbert, M. Reznick, P. Kaonohi, B. Huddleston, K. Fabri, E. McGraw, A. McCarthy, N. Wehrli, S. Daleo, M. Debella



## ASSOCIATION FOR CHILDHOOD EDUCATION



P. Colburn, G. Lio, M. Wilson, G. Poitras, S. Donkle, E. Koche-  
fasky, V. Vespa, J. Gregor, M. Meyer, M. Goodman, D. Grzybow-  
ski, D. Sundstrum, S. Highstone, B. Scharf, C. Owen, P. Smith,  
D. Rea, G. Polovina, M. Zlotnick, J. Giffiths, P. Rosenberg, S.

Singer, A. Wolfman, S. Graf, C. Swanson, F. Zelmar, M. Pasch.  
S. Ruland, J. Olson, S. Miller, M. Alberts, M. Czys, J. Houston, R.  
Popielarz, N. Lewis, M. Lombardi, J. Super, B. Kjeldsen, D. Tra-  
vetto, L. Holbrook, S. Stoltz

As part of an international organization, our branch of the Association for Childhood Education is the only professional organization on campus. A.C.E. concerns itself with such ideas as are represented in a democratic way of life. Through membership in this group students are on the way toward deeper insight into the over-all problems and unique demands of each individual child. Discussions, speakers and workshops are provided to help future teachers gain a respect for the profession they are entering. With the help of its sponsor, Miss Adams, the association stresses that to live is to grow in understanding, a process which continues throughout life.



D. Sundstrum, D. Grzybowski, S. Donkle, V. Vespa, D. Rea, C. Owen, P. Colburn, L. Jentzen, J. VanHofen, T. Sheehan, M. Lowenfeld, J. Houston, S. McLean, A. Knight, J. Hosein, M. Neumann, J. Matavosky, K. Roock, F. Desai, P. Snow, M. Karras, R.

Popielarz, J. Karlin, K. Hirota, C. Groves, J. Mehlsak, M. Alsover, J. Nakamura, H. Lee, N. Lewis, I. Tavai, J. Werner, E. Lodeski, L. Kunihiisa, P. Kaonohi

## INTERNATIONAL CLUB



Not only do rockets bring us closer to other planets, but if we were to travel by rockets instead of jet planes, other nations would be minutes, even seconds, away. International Club brings students of different backgrounds and nationalities together here at the college. The goals of the group are fellowship and service. The club helps to develop a better understanding among people of many countries as club members have participated in such activities as making hospital tray favors, folk dancing, taking trips to museums, watching slides of different countries, having speakers from far away lands, and preparing a pot luck supper featuring foods from other lands. Miss Neumann is faculty adviser for the group.



G. Alberini, G. Polovina, W. Wastcoat, J. Houser, K. Haarvig, M. Zlotnik, M. Goodman, N. Kahan, G. Poitras, Mrs. Moore, Mrs. Neulist, M. Wilson, A. Freier, P. Smith, D. Sundstrum, J. Griffiths, M. Alberts, C. Hedlin, K. Roock, M. Mabes, B. Scharf, M. Pasch, N. Wehrli, S. Pearlman, E. Calder, M. Garfield, E. Maglaya, M. Neumann, P. Hayna, K. Kreutzig, A. McCarthy, S. Heartlein, N. Deming, L. Holbrook, J. Matavosky, C. Wortham, D. Travetto, M. Kennedy, W. Weinreich, P. Kjeldsen, C. Gilszmer, G. Gillman, J. Kottler, L. Abrams, D. Muccianti, M. DeBella, S. Stoltz, V. Tinghino, J. Davies, L. Zabel, S. Loeb, M. Ward, J. Werner, B. Pearson, S. Miller, B. Appleman, G. Gilbert, D. Eggers, M. Reznick, S. Phillips

## Human Relations Club



In directing the rocket on course to its final mission, the Human Relations Club uses people as its sensitive instrument for social guidance. With Sandy Miller as chief engineer and Mrs. Moore and Mrs. Neulist as faculty advisers, it plans its programs around the spheres of political, religious, and social issues. The purpose of this organization is to improve relationships among all people through the understanding of various, often widely different, ideas. With expert guides in human relations at the controls, the rocket is on the way toward a bigger and better tomorrow in promoting intergroup activities and respect for all peoples and points of view.





P. Colburn, S. Highstone, H. Salpeter, Miss MacIntire, P. Baker, L. Fisher, G. Polovina, W. Wastcoat, I. Tavai, M Lowenfeld, S. Grindlay, R. Popielarz, C. Abrew, P. Kaonohi, J. Hernacki

## Peace Corps

Our rocket is on its mission of tomorrow. It is entering a stage in our effort as future teachers to aid others and to build a better world with peace. In the spring of 1962, National's committee was formed to handle this aspect of the rocket's course with Marty Lowenfeld as chairman of the control instrument panel and Miss Ethel MacIntyre as faculty adviser. Its purpose as an organization is to keep students informed of Peace Corps activities through wide and expert use of discussion groups, films, posters, and pamphlets provided by the chief ground headquarters, the Peace Corps office in Washington, D. C.

Throughout the year, further meetings were planned to follow closely the rocket's flight and actual operation. They provided opportunities for students and faculty to share with the Peace Corps and other organized crews as well as individuals who have traveled into under-developed countries exploring and contributing their part toward building a better world.





A. Rueckert, P. Colburn, K. Roock, L. Jentzen, S. Donkle, P. Kaonohi, G. Kirkpatrick,  
J. Willson

## Athletic Club

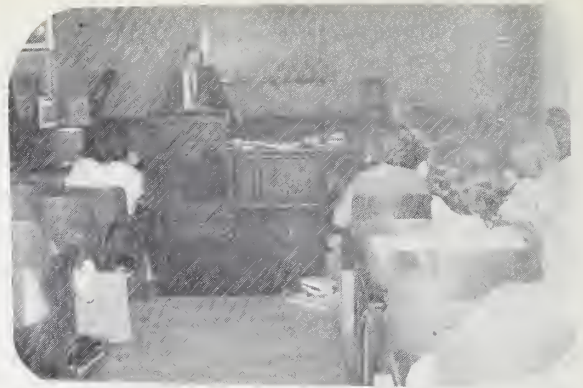


As a course-correction instrument, Athletic Club has had a busy and active schedule this year in deciding the physical structure of the rocket. For the first time, the club, with Mr. Hardy as faculty adviser, became a member group of the Illinois Athletic And Recreation Federation of College Women. Placement in this organization guided National's team into play in tournaments and intercollegiate games throughout the school year. Inter-class tournaments were also held at N. C. E. for the different sports, starting with volleyball. The students in Athletic Club helped guide the rocket into an especially enjoyable and successful year, heading for an even better future.

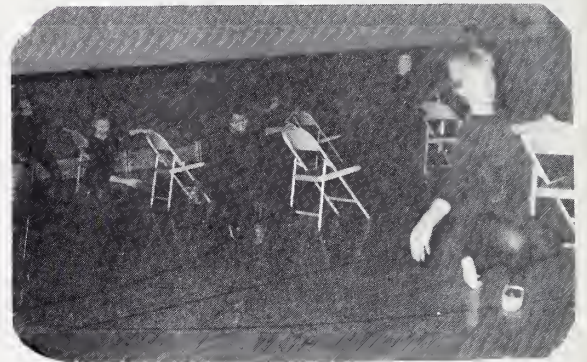
# CLUBS IN ACTION



Yearbook Bake Sale



Dr. Boyer speaks at A. C. E.



Dance Group exercises



Pledges



College Council Meeting



Peace Corps Day on Campus



T.A. Get Acquainted Picnic



Dorm Charm Lessons

# MORE ACTION



MENC meets in Music Hall



Drama Club Plans A Party



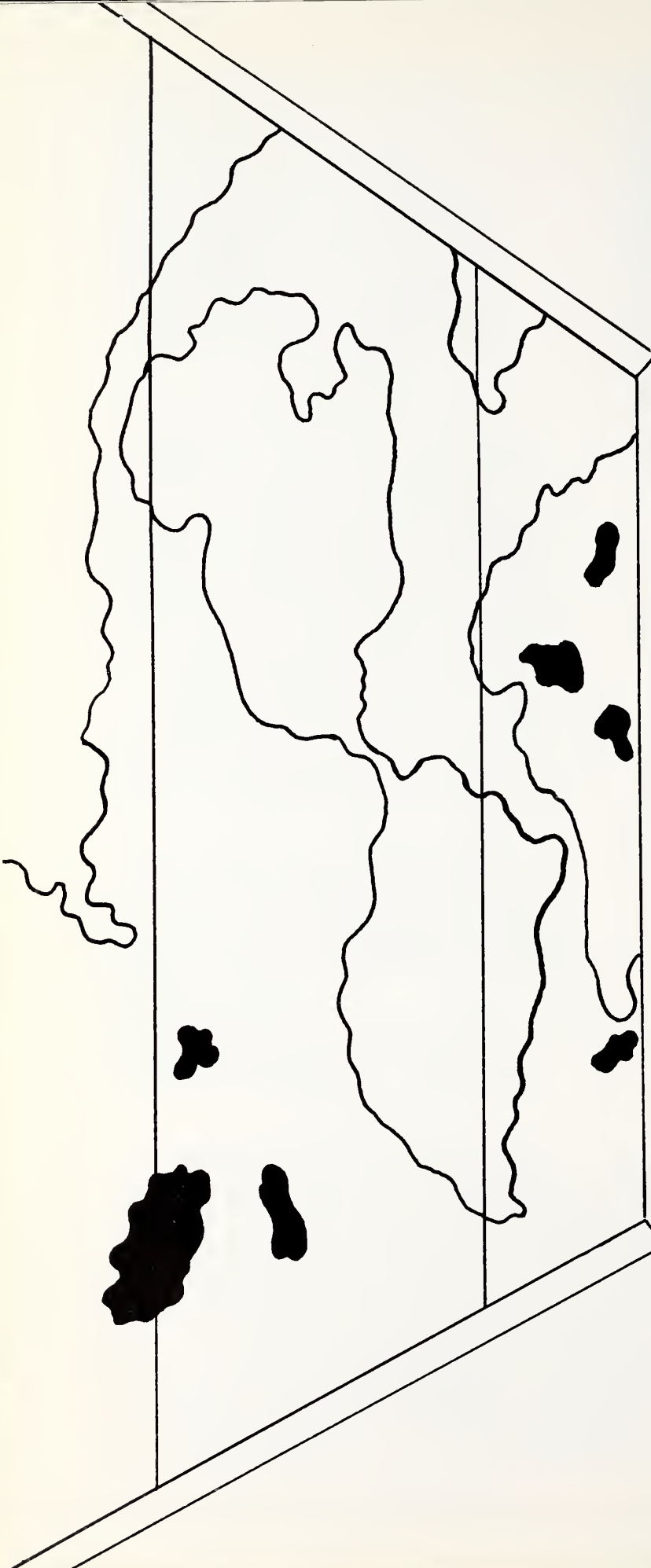
International Club Sees Films



Athletic Club Gives Us Action

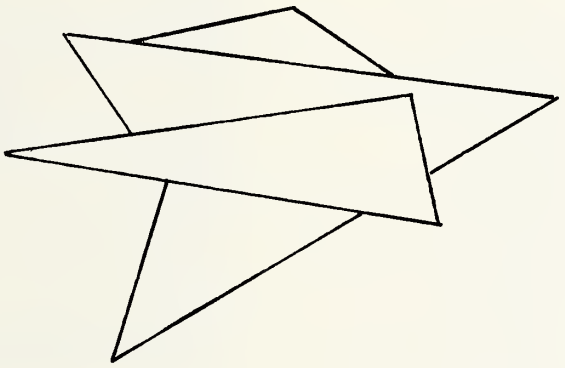


Junior Class Sells Candy



The special features and traditions of National comprise the final course correction for the rocket. This final course correction will assist the rocket, while on the way toward its destination, in perfecting the release and orbiting of its spacecraft. At National these special features and traditions assist the students in perfecting their cultural development, and serve as valuable means for self-improvement.

UNIVERSITY OF MICHIGAN LIBRARY





## COLLEGE COUNCIL INSTALLATION

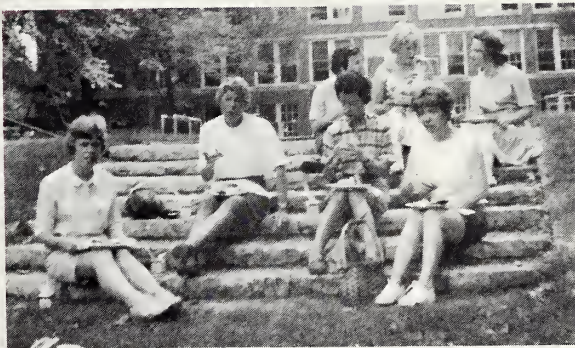
At the College Council Induction on Tuesday, October 16, 1962, Dr. Johnson, as head engineer in the preparation of our rocket, presented the N.C.E. Council members to the student body. The Council flight team is made up of class presidents, class representatives, club presidents, and the elected president and vice-president. This year's chief officers are Mary Karras, President, and Ruth Popielarz, vice-president. With induction ceremony, the 1962-63 College Council, the governing and legislative body of National, started on the way for the year.

Another group on campus activities and problems, the Kitchen Cabinet, was formed from members of the N.C.E. College Council and works closely with Dr. Johnson. It includes the president and vice-president of College Council, the class presidents, and the presidents of the dorm and town associations. It presents a strong connective link between the student body and the administration who inspect and guide our rocket.



## FRESHMAN ORIENTATION

All journeys begin with one step and the freshmen take this step with a warm welcome from National. At the new students' tea the new class begins the school year by getting acquainted. The members are now on their way; the launch was made with picnics, parties and get-togethers. This orientation for new students serves as a reorientation for upper classmen as well. A new school year has begun, a year of progress lies ahead.







## CLUB ORIENTATION WEEK

The purpose of club orientation week, held at the beginning of the year, was to introduce new students to the activities and to reacquaint old students with them. These clubs are valuable in reinforcing college values, supplementing the student's academic life, and providing the necessary opportunities for social maturity.

## THE SENIOR FASHION SHOW

The Senior Class through its November fund raising project has shown us how to move toward more all-school participation in class projects. The Senior Class fashion show held on Tuesday, November 17, utilized members of the junior, sophomore, and freshman classes as models. The show was a success both as a fund-raising project and as a model of school spirit.





The theater-goer in the stratosphere tried to forget his worries when Drama Club presented the children's comedy, "Sleeping Beauty of Loreland." This play brought a great deal of enjoyment to the lab school, college students, and faculty, and people of the community in the two performances at the college in November. The cast also toured to Lake Bluff and Lake Forest, where the play was performed for two large children's audiences.

## CHILDREN'S PLAY





"Toast" the Seniors



Now presenting...



Slip?



Our Faculty Fashions!!!



For the young man!

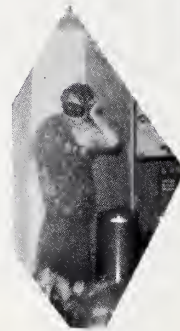


-that special occasion!

# HOOT NANNY 1962



Football!!



Ole



For the Classroom!



Sophomores



Early Elementary Teacher??



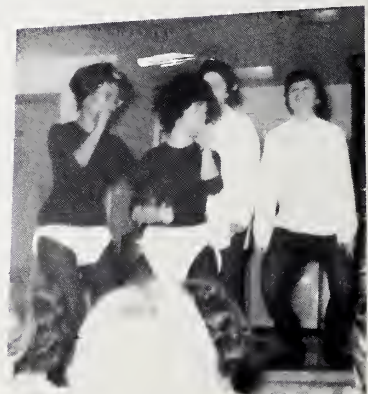
Loungewear



Freshmen



Juniors



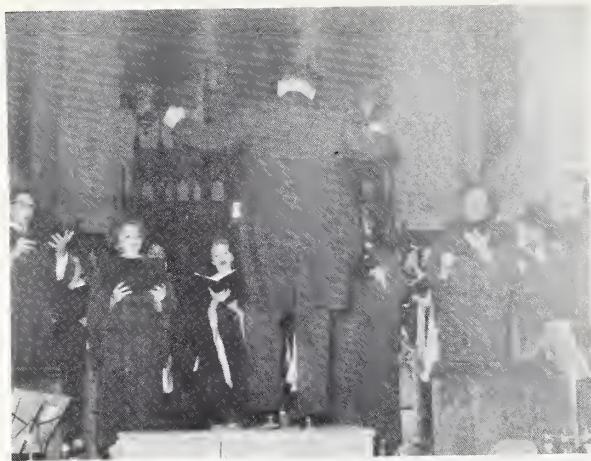
Seniors



## THANKSGIVING PROCESSIONAL

On Tuesday, November 20, the traditional Thanksgiving Assembly was held. This procession of students bearing gifts of food, crayons, etc. to be given to the Mary Crane Nursery School, was established in 1925 by Jane Adams and Edna Dean Baker. The spirit of giving was carried on by the inspiring message given to the college by Rev. Melvin Pearce of the Northminister Presbyterian Church of Evanston.

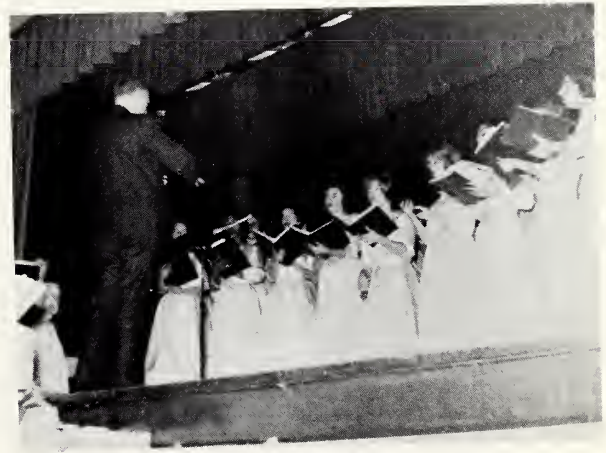




## CHRISTMAS TRADITIONS & ACTIVITIES

As our rocket traveled upward to a bigger, brighter future, it collected and carried with it a starry pattern of Christmas traditions and activities. On the nosecone gathered the star of Christmas activities with the caroling and concerts of National's college choir. One main point was formed by the choir concert, "The Magnificat," followed by the Christmas assembly, which sparkled with the gift processional, the musical performances of the choir, and Miss Rensch, a harp soloist. The stardust wreath of traditions, circling the middle of the rocket, held the freshmen and senior tree trimming party. It also included the dormitory seasonal decorations and open house with the music of the dormitory ensemble, "The Choralettes." The dormitory and town associations' dinners traditionally contribute to the Christmas feeling with its climax in the last school day's early morning senior caroling and Christmas breakfast at the dormitory. They were all joys and memories that added height and quality to our climbing rocket.







## JANUARY GRADUATION ACTIVITIES



The rocket's target was zeroed in upon with each step in the walk of the January graduates. During the final ceremony, the graduates were honored by the singing of the college choir and by the speeches of Dr. Johnson and Dr. Dow Kirkpatrick, pastor of the First Methodist Church. After standing upon the stage as newly launched teachers, the January class of 1963 held a final group gathering at the Graduation Tea. The January graduation activities then removed the final control over our spacecraft, releasing it into its own individual orbit of a brighter and bigger future.



# NEW STUDENTS SECOND SEMESTER



Top Row: Mary Lamszus, Gail Ship, Linda Karlov  
 Middle Row: Barbara Horwitz, Judy Cohen  
 Bottom Row: Sheila Trace, Rita Wurmser, Susan Braverman



Back Row: Joan Anderson, Don Snowhook, Judy Janas, Sheila Wolfe  
 Front Row: Beverly Coleman, Marlene Clapick, Leni Tinkelstine

Just as new recruits must be added to the space team throughout the year, so are new students added to the roll call here at National. These new members come to us from other schools, mainly in the Midwest. The majority have taken work at the University of Illinois (either at Navy Pier or Champaign). These new students are Susan Braverman and Linda Karlov, both of Lincolnwood; Marlene Clapick, Judy Cohen, Beverly Coleman, Gail Ship, Neena Strongin, and Sheila Wolfe, Judy Hanas, all from Chicago. Donald Snowhook of Evanston, formerly of Northwestern University has enhanced the junior class.

Other new students from other leading universities are: Karen Goodman of Highland Park, from Eastern Illinois University; Sheila Trace of Wilmette, from the State University of Iowa; Rita Wurmser of Lincolnwood from Purdue University. From other smaller colleges throughout the United States are Joan Anderson, of Rockford, Illinois, who is transferring from Mt. St. Clair Jr. College, Clinton, Iowa; Leni Finkelstein of Woodmore, New York, who comes to us from Centenary Jr. College in New Jersey; Linda Moline, of Chicago, who is from Wright Jr. College in Chicago. From the far shores of Tokyo, Japan, is Moriko Akiyoshi, who comes to us from Tokyo-Ewia Jr. College in Tokyo. A recent graduate from Senn High School in Chicago is Mary Lamszus. Other new students this semester are Mrs. Walter King of Glencoe, Ill. and Mrs. David Smith of Wilmette.





Twist At The First Mixer Of The Year



Time For Conversation



Refreshments and Chatter At First Mixer



# MIXERS



Sophomore Mixer Atmosphere

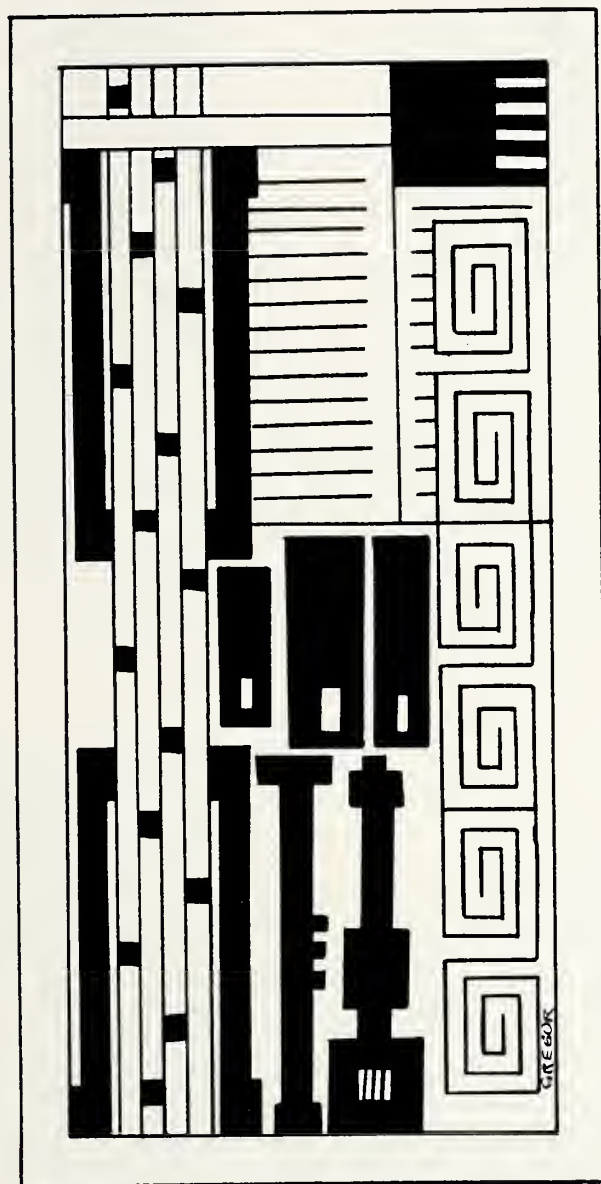


Purdue Men Stay For Dinner



Sophomore Mixer Entertainment

# THE FESTIVAL OF THE ARTS

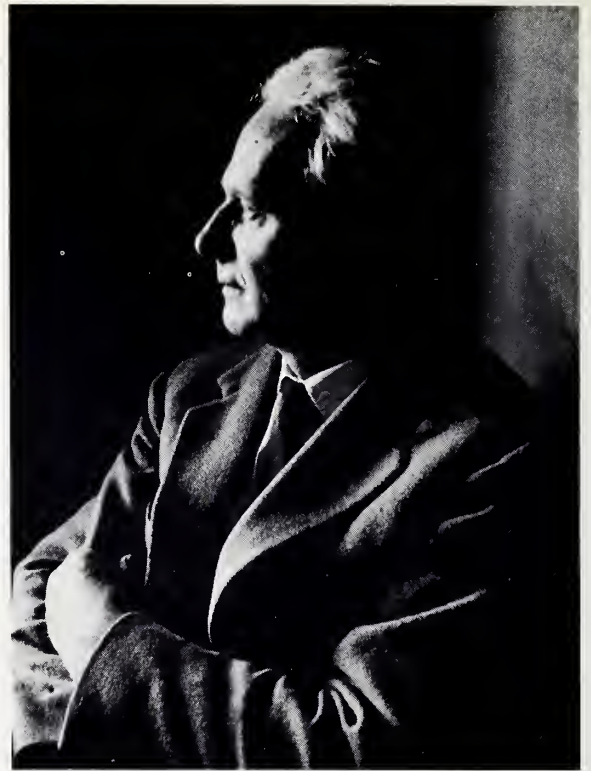


## VISTAS FOR THE FUTURE

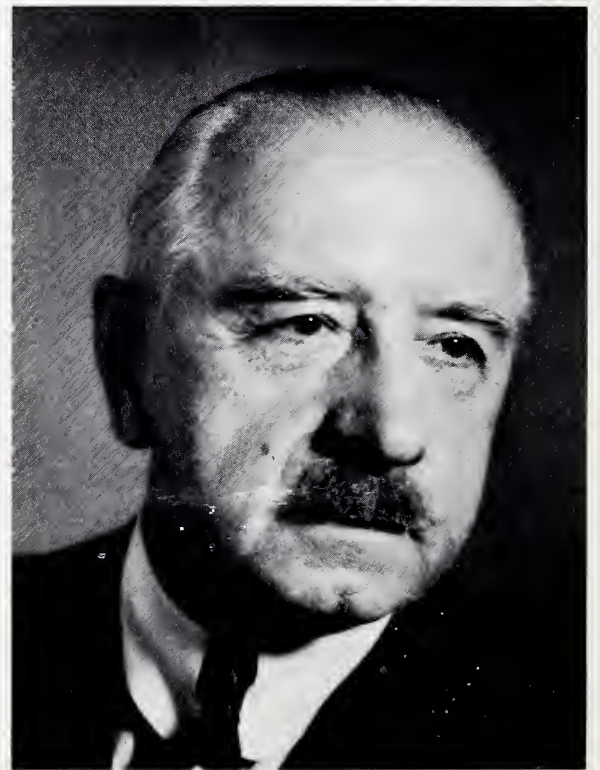
# FESTIVAL OF ARTS

A committee of faculty and students, headed by Mr. Cousins and Dr. Cantelupe, joined forces to present the Fifth Annual Festival of the Arts. Built on the theme Vistas of the Future, events were presented throughout the year.

At a fall assembly two movies, *Guernica*, about the work of Picasso, and *The Making of A Movie*, were shown. The poet Paul Engle spoke to several classes in November. For those interested in the dance, a recital was presented by Sybil Shearer, Artist in Residence at N. C. E. Stephen Spender, the English poet, spoke on the evening of March 2. On March 19 Rudolph Ganz, president emeritus of Chicago Musical College, presented an assembly during which he both spoke and played. The Drama Club, with Dr. Kidder as director, presented *Antigone*, by Jean Anouelle, on March 28. The climax of the Festival came on March 31, when the College Choir presented Mendelssohn's *Elijah*. Soloists for the performance were Louis Sudler, Baritone; Evelyn Reynolds, William Miller, and Miriam Cousins. This concert is National's contribution to the Evanston centennial. During the month of March photographs taken by Arthur L. Edwards on his travels throughout the United States and Europe were on display.



Stephen Spender - March 2



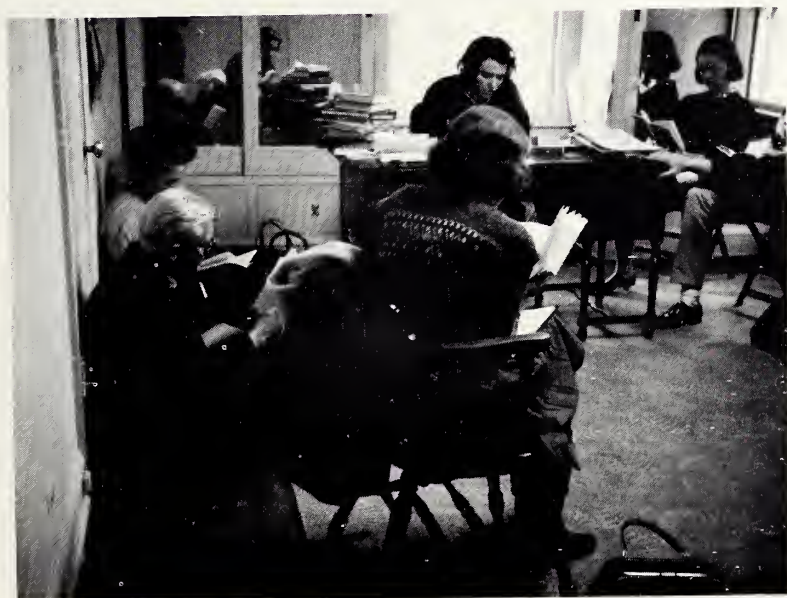
Rudolph Ganz - March 19



Louis Sulder - March 31



Sybil Shearer



Antigone - March 28



## WHO'S WHO AMONG STUDENTS IN AMERICAN UNIVERSITIES AND COLLEGES

On the way to the climax of their college career, outstanding National seniors are recognized for their scholarship, participation and leadership in academic and extracurricular activities. The national publication gives National a quota of members, and Who's Who has become a tradition revealing the promise of future success of college students. The seniors selected will appear in next summer's issue of Who's Who Among Students in American Universities and Colleges.



## SCHOLARSHIPS

Well qualified upperclassmen are eligible for awards of recognition for their last year of basic training. Excellence in Scholarship, character, and teaching ability are the qualifications needed for high ranking juniors to qualify for four honorary scholarships awarded for the senior year. This year:

1 The Elizabeth Harrison Schobarship went to:

Diane Boroviak

2. Mrs. John N. Crouse Scholarship went to:

Arlene Robbin

3. The Eva Grace Long Scholarship went to:

Mary Karras

4. The Edna Dean Baker Scholarship went to:

Juliette Hosein

# MAY QUEEN



Marti

Lowenfeld

Your star, which will shine brightly forever, has guided you to this special day for you and your court. We hail your crowning and proclaim eternal loyalty to you.

# AND COURT



Barbara Frost



Sherry Coll



Diane Boroviak



Susan Loeb



Gail Alberini



Lynn Clayton



Arlene Robbin



Mary Karras



# Daisy Chain Song - 1962

Words by Daisy Chain Committee

Our wish - es we send on this glor - i-ous day. As

each of you trav - els your se - par - ate way.

Now is the time to leave N. C. E.

Stu - dents and friends and fac - ul - ty.

Festivals meetings dances went fast, And now are a part of a memorable-

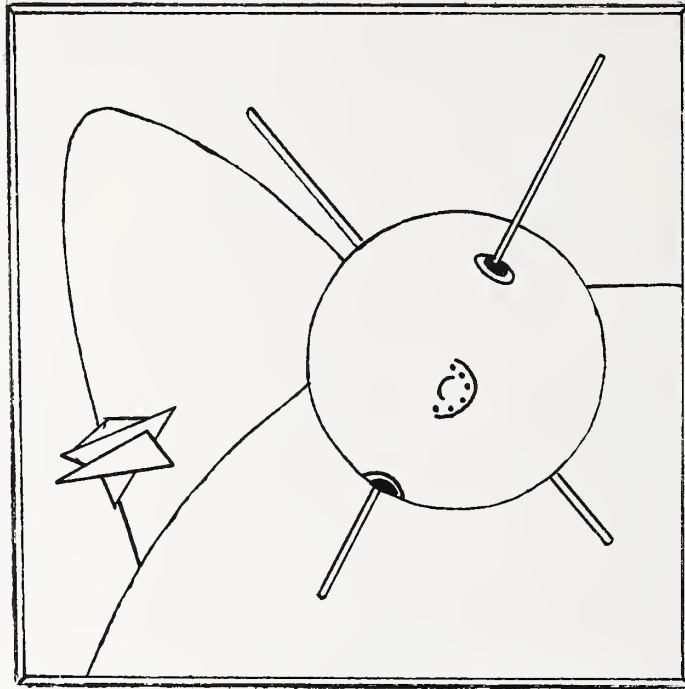
past. Your future a - waits as you pass thru the door. Suc -

cess we wish for ev - ver more.



## DAISY CHAIN

As the last stage of the rocket is launched, the members of the Sophomore class weave the daisy chain through which the seniors march toward their chosen profession. The song which the sophomores sing symbolizes the spirit of National, and leaves in the hearts of the graduates a lasting and final memory.



## SENIORS

Time passed, changes occurred, and progress resulted. This was the story of our rocket and spacecraft-the story of our seniors. Finally they reached the important step of being disengaged from their three stage rocket. The process was long and complicated, but worth it, for now they are prepared to travel independently on the way.



B. Frost-president; L. Clayton-vice-president; Mary Ellen Ruh-secretary; S. Highstone-treasurer



J. Gates, J. Willson, N. Wehrli

## SENIOR CLASS OFFICERS AND CABINET



Abrams, Lynne  
Chicago, Illinois  
Univ. of Illinois  
ACE, 3, 4; Human Relations, 4.  
Lynnie is a real treat.



Alberini, Gail  
Chicago, Illinois  
Choir, 1, 2, 3, 4; Dance, 1, 2, 3, 4; Drama, 1, 2, (Sec.), 3, 4; TA, 1 (Sec.); Human Relations, 2, 3, 4; Yearbook 3 (Literary Ed); Kappa Delta Pi, 3, 4 (Sec.); WHO's WHO.

A deep, thoughtful person who listens and offers much. "Well, from the BA'HAI viewpoint."



Anderson, Linda Marie  
Phoenix, Arizona  
Activities Chairman, 1; Dance, 2; Kappa Delta Pi, 3, 4; MENC, 1.  
An August Grad.



Appleman, Barbara  
Hollywood, California  
St. Lawrence Univ.  
Russel Sage College  
ACE, 3, 4; Drama, 3; Children's Play; Human Relations, 3, 4 (Publicity).

Bobbie-Happy Valentine's Day--October?



Barasch, Carolyn Kozlor  
Skokie, Illinois  
Univ. of Illinois  
ACE, 3, 4; Human Relations, 3; Festival, 2.  
Carole-Marriage and Graduation.



Belzer, Evelyn  
Manhasset, New York  
Activities Chairman, 1; Kappa Delta Pi, 3, 4; Ambassador, 1, 2, 3, 4 (Pres.);  
Dormitory Treasurer, 3.  
Evie-Blushing Bride. "Oh you guys, let's get organized."



Binder, Madeline  
Chicago, Illinois  
Univ. of Wisconsin  
ACE, 2, 3, 4; TA, 2, 4; MENC, 3, 4;  
Drama, 3, 4; Human Relations, 2.  
Maddi-Marriage in April, Graduation in August.



Bjork, Carlotta



Bogolub, Jean  
Chicago, Illinois



Borak, Linda  
Chicago, Illinois



Boroviak, Diane  
Lansing, Illinois  
ACE, 1, 2, 3, 4 (Pres.); Human Relations, 1, 2, 3, 4; VP Junior Class; Kappa Delta Pi, 3, 4; Dorm Counselor, WHO'S WHO  
"Next week, I'm cracking Up."



Brill, Carol A.  
Chicago, Illinois  
Univ. of Illinois  
TA, 2, 3, MENC, 2  
Marriage-Baby-Graduation



Butterworth, Betty  
Swampscott, Massachusetts  
ACE, 1; VP Freshman Class, Drama, 1, 2; Athletic Club, 1; Festival, 1, 2; Dorm, 3 (Sec), 4 (Soc. Chairman).  
Buttsie--"Let's have a Party!"



Childs, Shirley Ann  
Winnetka, Illinois  
Treasurer Freshman Class; ACE, 4;  
Athletic Club, 1, 2 (Pres.), 3; TA, 1, 2,  
3, 4;  
June Bride  
"Lock the car doors or the car won't  
be in the parking lot!!"



Claassen, Joyce Schmidt  
Kansas  
Evanston, Illinois  
Bethel College  
ACE, 4.  
Always ready with a smile.



Clayton, Lynn  
Wilmette, Illinois  
Dance, 1, 2, 4; ACE, 2; Sec. Soph.  
Class; Social Chairman Junior Class;  
VP Senior Class; Athletic Club, 2;  
WHO'S WHO.  
Lynn or Mary Ellen?? "L&M"



Cohen, Bari  
Chicago, Illinois  
Univ. of Illinois  
ACE, 3, 4; TA, 3, 4



Cohen, Nancy H.  
Evanston, Illinois  
Univ. of Illinois  
Human Relations, 2; Kappa Delta Pi,  
4.  
Married--a busy girl in a whirl.





Coll, Sherry  
Alton, Pennsylvania  
Activities Chairman 1; Festival, 1, 2;  
VP Soph. Class; Ambassador, 1, 2, 3,  
4; ACE, 3; Drama, 1, 2, 3 (VP);  
WHO'S WHO.

Collsey--"Anyone want to build an  
atomic reactor?"



Deboer, Judy  
Deerfield, Illinois  
Western Michigan Univ.  
Choir, 3; TA, 3, 4; ACE, 4.

"Hey you guys, I've got a Joke."  
Mabel--Ed.200A went over big--so did  
the cameraman!!



Demas, Lorraine Mary  
Chicago, Illinois  
TA, 1, 2 (Treas.) 3, 4; Festival, 1.

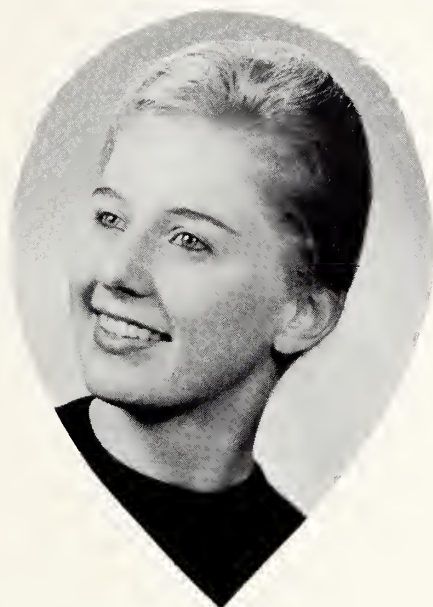
Laurie--Always ready for bridge.



Deming, Nancy L.  
Mt. Prospect, Illinois  
Univ. of Wisconsin  
Human Relations, 4.



Denenholz, Judy  
Chicago, Illinois  
Univ. of Illinois  
ACE, 3, 4; TA, 3, 4; Human Relations,  
3, 4; Internátional, 3  
"Judi--Gee, I'm impressed".



Ewert, Jean Ellen  
Arlington Heights, Illinois  
William Woods  
ACE, 2, 3, 4 (Historian) MENC, 2;  
Dance, 3 (Treasurer) Festival, 2; Ass't  
Social Chairman of Dorm, 2; Publicity  
Dorm, 3.  
Jeannie--Creative and loves parties.  
"Yea! I'll go."



Dyer, Ann  
Pueblo, Colorado  
Colorado State Univ.  
ACE, 3, 4.  
Never does today what she can put  
off until tomorrow.



Feldberg, Karen Robins  
Chicago, Illinois  
TA, 1, 2 (Soc. Chair.) 3, 4; Festival,  
1, 2; ACE, 3, 4; Kappa Delta Pi, 3, 4  
(Treas.)  
Blonde... Bright... Busy...



Fefferman, Eileen



Fisher, Betty Joan  
Evanston, Illinois  
Kendall College  
TA, 3, 4; MENC, 4.  
Still water runs deep.



Fox, Judith  
Skokie, Illinois  
Univ. of Wisconsin  
Judy--always talking--mostly with  
her hands.



Frost, Barbara  
Chicago, Illinois  
TA, 1, 2 (Pub.) 3 (Treas ), 4; Festival,  
1, 2; Activities Chair., 3; Children's  
Play; Senior Class President; WHO'S  
WHO.

Barb--friend, humorist and bridge  
player.



Garfield, Myrna Fox  
University Heights, Ohio  
Ohio State Univ.  
ACE, 4; Human Relations, 4; Senior  
Fashion Show, 4; Children's Play.

As smooth as mayonnaise. Myrna  
meets situations. Marriage and Grad-  
uation.



Gates, Janet  
Wheaton, Illinois  
Univ. of Wisconsin  
ACE, 4; Activities Chair. 4.  
Jan--"How bout a mischief!"



Gertz, Margery  
Chicago, Illinois  
Univ. of Wisconsin  
ACE, 3, 4.  
Midge--Cute, perky, on the ball...



Gillman, Geraldine  
Chicago, Illinois  
Univ. of Wisconsin  
TA, 3, 4; ACE, 3, 4;  
Human Relations, 4.  
Geri



Gorodess, Marilyn

Goldstein, Sandra  
Skokie, Illinois  
Univ. of Illinois  
ACE, 3, 4; Human Relations, 3  
Sandy



Gladstone, Trudy



Harloff, Sharon



Haarvig, Karen Elizabeth  
Des Plaines, Illinois  
Soc. Chair., 1; Human Relations, 2;  
Ambassador 1, 2, 3, 4.

Loves nature--especially the lake!  
August Grad.



Holzgreffe, Ursula  
Chicago, Illinois  
Dance, 1; Drama, 1; Festival, 1; Inter-  
national, 1, 2, 3; TA, 1, 2, 3, 4; Human  
Relations, 3; Kappa Delta Pi, 3, 4  
(Pres.); Yearbook, 3 (Photographer).

Marriage in August.  
Sweet... Conscientious.



Highstone, Susan A.  
Chicago, Illinois  
Univ. of Colorado  
ACE, 4; Choir, 4; Treas. Senior Class;  
Peace Corps 4.



Hosein, Juliette Kathleen  
Tunapuna, Trinidad  
International, 1, 2, (Sec.) 3 (Pub.), 4;  
TA, 1, 2, 3, (VP), 4 (Pres.); Choir, 2,  
3, 4; Human Relations, 3, 4; WHO'S  
WHO; Edna Dean Bake Award, 4.

Our ambassador from Trinidad. Delightful personality--a friend to all



Huddleston, Betty Lou  
Ambridge, Pennsylvania  
Drama, 1, 2, 3, 4; Human Relations, 1;  
ACE, 2, 3, 4; Athletic, 2; Chaff, 2,  
(Ass't Ed) 3 (Editor); MENC, 3; Year-  
book, 4.

"... May I ask you something?"



Kahlenberg, Leone  
Two Rivers, Wisconsin  
ACE, 2, 3, 4; Human Relations, 2;  
Children's Play.

Leone found Rhett Butler at an NCE mixer!



Kaplan, Janice  
Chicago, Illinois  
Univ. of Illinois  
ACE, 3, 4; TA, 3, 4; Human Relations,  
4.

Janie--always ready for fun. "Don't; you're embarrassing me."



Karras, Mary Faye  
South Bend, Indiana  
International, 1, 2, 3 (Treas.), 4; ACE,  
1, 2, 3, 4; Chaff, 1; Ambassador, 1, 2, 3,  
4; Human Relations, 2, 3; Pres. Soph.  
Class; Fire Marshall, 3; Kappa Delta  
Pi, 3, 4; President of College Dorm  
Counselor, 4; WHO'S WHO. Eva Grace  
Long Scholarship.  
"Se Gnorizo aps tin opsi"  
"I know I just flunked that test."



Kennedy, Mary  
Chicago, Illinois  
Wright Jr. College  
International, 3; Human Relations, 3;  
ACE, 3; MENC, 4.  
"We'd better discuss our studying  
before we actually do it."



Kottler, Joan  
Chicago, Illinois  
Univ. of Illinois  
ACE, 3, 4; TA, 3; Human Relations, 3.  
Joanie... Blond... Petite.



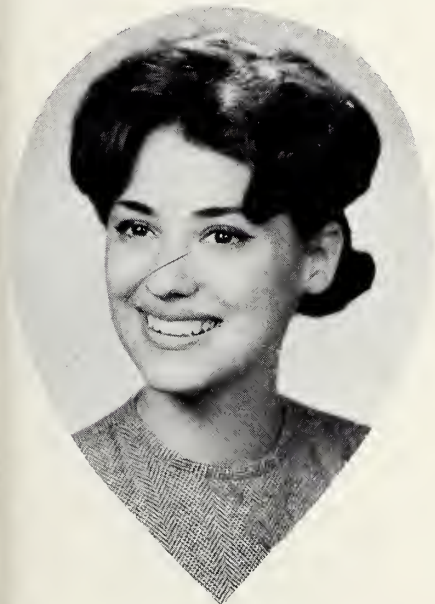
Kochevsky, Estelle R.  
Chicago, Illinois  
Univ. of Illinois  
Senior Fashion Show 3; ACE, 3.  
Tall... "Girls, what do you think?"



Knight, Cheryle Lynne Clicquennoi  
Sheboygan, Wisconsin  
Baptist Missionary Training School  
Choir, 3; ACE, 3, 4; Human Relations,  
3; MENC, 3; Kappa Delta Pi, 3, 4.  
A young bride who is friendly and  
conscientious.



Leipzig, Ellen J.  
Chicago, Illinois  
Univ. of Iowa  
Points and Revisions, 4.



Leshin, Gerie  
Chicago, Illinois  
Univ. of Wisconsin  
ACE, 2, 3; Human Relations, 2, 3; Kap-  
pa Delta Pi, 3, 4; Junior Class Presi-  
dent.  
"Bridge, anyone!"



Levine, Devra Rose  
Chicago, Illinois  
Univ. of Indiana  
Kappa Delta Pi, 4.  
"Always in a hurry, getting the job  
done. Balancing her life with work and  
fun."





Lieberman, Myrna  
Chicago, Illinois  
Wright Jr. College  
Roosevelt Univ.  
ACE, 4; TA, 4; Drama, 4 (VP)  
Wedding Bell!



Loeb, Susan  
Whitefish Bay, Wisconsin  
Univ. of Wisconsin  
International, 2; Festival, 2; ACE, 2,  
4; Human Relations, 2, 3 (VP), 4 (VP);  
Pub., 3; Children's Play 3, Soc. Chair.,  
4.

Sukie--three jobs and seeking em-  
ployment. California, open those gold-  
en gates.



Lowenfeld, Martha  
New York City, New York  
President Freshman Class; ACE, 1, 2,  
3, 4; Ambassador, 1, 2, 3, 4; Festival, 1,  
2; Human Relations, 2 (VP); Peace  
Corps 3, (Chair.), 4; International, 3;  
Pres. of Dorm; WHO'S WHO.

Marti--A friend to all. "Guys, let's  
do something exciting!"



Mc Cann, Suzanne



Maglaya, Estrella  
Chicago, Illinois  
Univ. of Illinois  
MENC, 4 (Pub.); ACE, 4; Human Re-  
lations, 4.

Este--"Let today embrace the past  
with remembrance and the future with  
longing."



McGraw, Emma Ann  
 Wabeno, Wisconsin  
 Univ. of Wisconsin  
 ACE, 2, 3, 4 (VP); Yearbook, 2.  
 Emmy--girl with the winning wardrobe.



Meadows, Sharon  
 Skokie, Illinois  
 Univ. of Illinois  
 Human Relations, 3; ACE, 3, 4.  
 "Travel? Anywhere!"



Miller, Sandra  
 Marshfield, Wisconsin  
 Univ. of Wisconsin  
 Kendall College  
 Human Relations, 3, 4 (Pres.) ACE,  
 3, 4.  
 Sandye--social pressure organizer.  
 "Now was that nice!"



Oelerich, Philomene  
 Wilmette, Illinois  
 Maryville College  
 TA, 3, 4; ACE, 3.  
 Phil--a wonderful friend with a great sense of humor.



Olsher, Gail  
 Skokie, Illinois



Pinkus, Diana  
Chicago, Illinois  
Univ. of Illinois  
ACE, 3, 4.

Gay and bouncy... Ready to go!



Popielarz, Ruth Elizabeth  
Palos Park, Illinois  
Ambassador, 1, 2, 3, 4; Festival, 1, 2;  
Human Relations, 1; TA, 2, 3, 4; Chil-  
dren's Play; International, 2, 3, 4; ACE,  
2, 3, 4; Yearbook, 4; Kappa Delta Pi  
3, 4; Vice President College Council.

Ruth E.--A loss to the Motley Crew,  
a gain to the Seniors. A responsible  
worker and sincere friend. "Listen!"  
August Grad.



Pinto, Sheila  
Wilmette, Illinois  
Univ. of Illinois



Pritikin, Lee  
Chicago, Illinois  
Univ. of Illinois  
TA, 3, 4; ACE, 3, 4;

Sophisticated and sweet...



Radde, Elsie  
Sandusky, Ohio  
MENC, 3 (Pres.).

Quiet, friendly hard worker.



Ransburg, Mary Catherine  
Wayzata, Minnesota  
Ambassador, 1, 2, 3, 4; Festival, 1, 2;  
ACE, 2, 3, 4; Yearbook, 2 (Literary Ed);  
Sec. Junior Class.  
"Oh! those Minnesota Ministers."



Resnick, Karen



Roberts, Janis  
Evanston, Illinois  
TA, 1, 2, 3, 4; Dance, 1; Activities  
Chairman, 2  
Jan--good sense of humor.



Robbin, Arlene  
Chicago, Illinois  
TA, 1, 2, 3, (Soc. Chair.), 4; Festival, 1,  
2; ACE, 2, 3; Kappa Delta Pi, 3, 4  
(VP) Citizenship Com., 3.  
Full of fun and work.



Rosenberg, Leslie



Rueckert, Ann  
Kansas City, Missouri  
Kansas City Jr. College  
Choir, 3; Athletic 3, 4 (Pres); MENC,  
4.



Ruggles, Alice Elaine  
Three Rivers, Michigan  
Dance, 1, 2, 3 (VP), 4; ACE, 1, 2, 3, 4;  
Festival, 1, 3; Chaff, 3 (Art Ed); MENC,  
3.

"Any news from old NU, MSU, or  
Purdue?"



Ruh, Mary Ellen  
Chicago, Illinois  
Dance, 1; TA, 1, 2, 3, 4; Festival, 1,  
2; Citizenship Com. 2; Sec. of Senior  
Class.

MaryEllen or Lynn??? Neat, pert,  
efficient, always dependable.



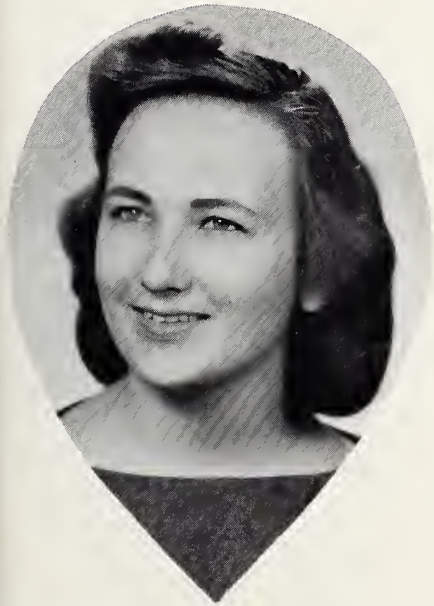
Saxon, Iris



Sandman, Penny  
Lincolnwood, Illinois  
Univ. of Illinois  
TA, 2, 3; ACE, 3.



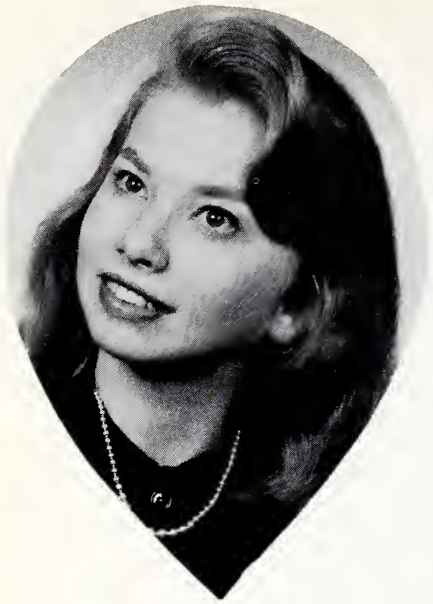
Schwartz, Vicki  
Chicago, Illinois  
Univ. of Wisconsin  
ACE, 3, 4; Points and Revision 3; Kap-  
pa Delta Pi, 4.  
Cute and always miling.



Schwiedergoll, Dorothy  
Villa Park, Illinois  
Choir, 1, 2, 3, 4; TA, 1, 2, 3, 4; Human  
Relations, 1, 2, 3, 4  
Dottie-deeply sensitive and relig-  
ious. "Hi, Buddy!"



Shapiro, Carol  
Evanston, Illinois  
Univ. of Illinois  
ACE, 3; Human Relations, 3; TA, 4;  
MENC, 4.  
A friendly smile for everyone. Ready  
to help all.



Sharpe, Phyllis Eileen  
Riverside, Ill, Osterville, Mass.  
Dance, 1, 2, 3 (Pres.), 4 (Pres.); Choir,  
1, 2, 3, 4; MENC, 1, 2 (VP); ACE, 1,  
2, 3, 4; Citizenship Com., 1; Rotary  
Club Scholarship 2; Kappa Delta Pi,  
3, 4; College Council Secretary.  
Lolly--heart in the dance.



Sherman, Roberta  
Chicago, Illinois  
Ohio State Univ.  
TA, 2, 3.  
Bobbi--cute as a button.



Singer, Sandra  
Skokie, Illinois  
TA, 1, 2, 3, 4; ACE, 2, 3, 4; Drama, 1;  
Chaff. 1.  
Sandy--quiet and shy, but a deep  
thinker.



Snyder, Phyllis



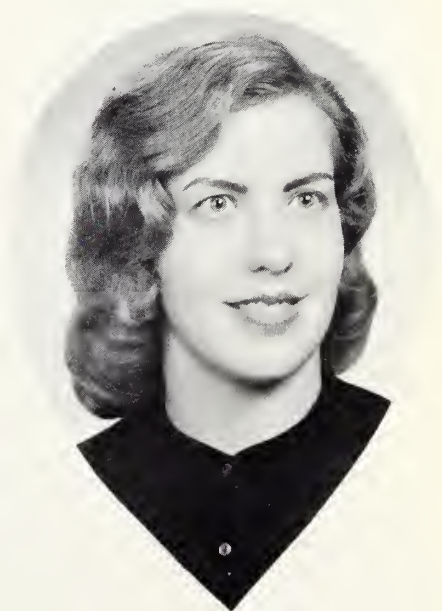
Tnuy, Patricia Ann  
Lincolnwood, Illinois  
International, 1, 2, 3, 4; Chaff, 1;  
Dance, 1, 2, 3.  
Pat--everybody's friend.  
"OH! Crumb, haven't done my work."



Vespa, Vicki Ann  
Marseilles, Illinois  
International, 1, 2, 3, (VP) 4; Chaff,  
1, 2, 3, 4; ACE, 1, 2, 3, 4; Human Re-  
lations, 2, 3, (Pub.) 4; Athletic, 1, 2;  
USNSA Rep., 1; Treas. Soph. Class;  
VP of Dorm; WHO'S WHO.  
Vic--always smiling???  
"All right you guys, knock it off!!!"



Wehrli, Naacy  
Naperville, Illinois  
Drama, 1, 2, 3, 4; Human Relations, 1,  
3, 4; Children's Play; Peace Corps, 2,  
3, 4; ACE, 1, 2, (Treas.) State Student  
Chairman, 3, 4; Pres. Freshman Class;  
VP Soph. Class. USNSA Senior Rep.  
Wehrlibyrd--a fighter to the finish.  
August Grad.



Vidmar, Marilyn  
Joliet, Illinois  
Joliet Jr. College  
ACE, 4; MENC, 4.  
"I don't believe it."





Weiner, Virginia Anne  
Oak Park, Illinois  
Univ. of Illinois  
Festival, 2, March Play 2; Yearbook 3  
(Art Ed.); Chaff, 3, 4; Kappa Delta Pi,  
3, 4; USNSA Coordinator, 4; National  
Poetry Association, 3

Ginny--always smiling and enthusias-  
tic.



Wolfman, Harriet  
Skokie, Illinois  
ACE, 1, 2, 3, 4; TA, 1, 2, 3; Drama, 1,  
2; Dance, 1, 2, 3, 4; Chaff, 1.  
A friendly personality... now Mrs.



Willson, Jean Marie  
Grayslake, Illinois  
Festival, 1; ACE, 1, 2, 3, 4; Children's  
Play; International, 2, 3, 4; Yearbook,  
1, 4; Athletic Club, 3, 4; Citizenship  
Com. 4.

Tillson--a friendly person "Willson  
with two l's, Please" August Grad-  
Nov. Bride.



Youssi, Sharon Ann  
Morton Grove, Illinois  
Dance, 1, 2; TA, 1, 2, 4; Chaff, 2, 3;  
ACE, 3, 4.

"Oh, I don't agree!" Model type....



Zelmar, Fern  
Chicago, Illinois  
Univ. of Wisconsin  
MENC, 4; ACE, 4; Drama, 4; Chaff, 4.  
A willing listener. "Let me tell you..."

# THE GRAND OLD SENIORS



Now we don't need to worry about cleaning the fish bowl!!



That last final was a "lulu" !!!



Just peepin' in



Senior  
Action



Inaction



Home Soon



Funniest thing happened . . .



"3 more days 'til gradua-a"

# MISSION ACCOMPLISHED

The destination has been reached. The spacecraft that was launched, guided, and finally orbited, is now ready to transmit information back to earth. Just as the spacecraft is now prepared to serve society as one of its useful products, the graduates of N. C.E. are likewise prepared to serve as educators for the world's citizens.

The goal of National-the climax of each student's life-a competent, efficient teacher, well trained and qualified to accept the challenge of the modern age, of the modern classroom. Our mission is accomplished, but this is not the end, for each graduate must now embark upon a new journey of his own, and continue on the way to even greater heights, achievements, and accomplishments.

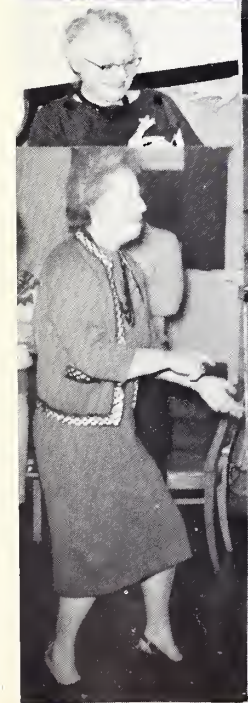
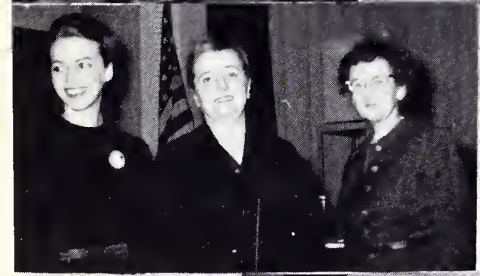


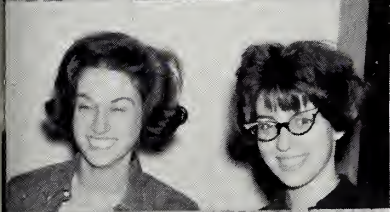
I believe in boys and girls, the men and women of a great tomorrow; that whatsoever the boy soweth the man shall reap. I believe in the curse of ignorance; in the efficacy of schools; in the dignity of teaching; and in the joy of serving others.

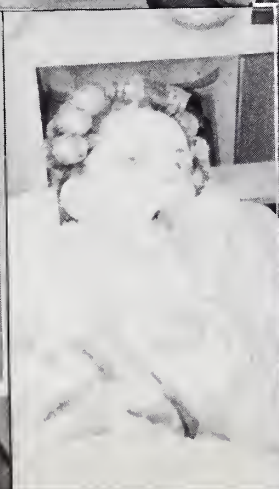
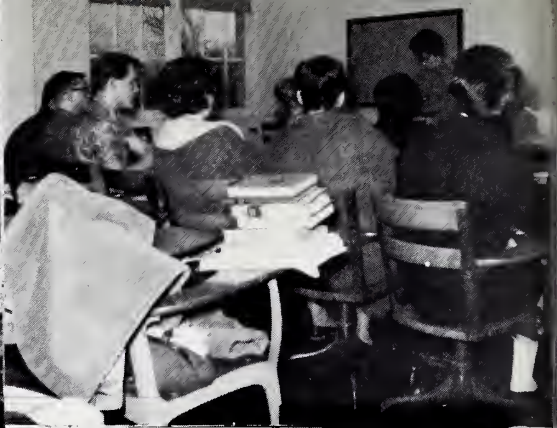
I believe in wisdom as revealed in human lives as well as in the pages of the printed book; in lessons taught, not so much by precept as by example; in ability to work with the hands as well as to think with the head; in everything that makes life large and lovely.

I believe in beauty in the schoolroom, in the home, in daily life, and out-of-doors. I believe in laughter; in love; in faith; in all ideals and distant hopes that lure us on. I believe that every hour of every day we receive a just reward for all we are and all we do. I believe in the present and its opportunities; in the future and its promises; and in the divine joy of living.

Edwin Osgood Grover







*The Family Bank of the North Shore is a Full Service Bank*

## State Bank in Evanston . . .

the bank  
where decades  
of experience  
and stability  
give customers  
that inner sense  
of confidence  
and pride

**Our 90th year  
of continuous  
service**

Evanston's oldest bank and Fountain Square's original Fountain

**STATE BANK** AND TRUST COMPANY • EVANSTON

Member Federal Deposit Insurance Corporation • Federal Reserve System • Chicago Clearing House Association



CONGRATULATIONS

Yearbook Editors

of

1963

Lenna Jewelers inc.

Authorized Agents

OMEGA

Tissot watches

Expert Repairing and Remodeling of  
All Jewelry Clocks and Watches  
Oriental and Cultured Pearls Restrung  
Engraving Done While You Wait

APPRAISERS

Greenleaf 5-4440

1716 Sherman Ave., Evanston, Ill.

2008 Central Street

Evanston, Illinois

DAvis 8-1200

Tag's Bakery

"Finest In Pastry"

517 Fourth Street

Wilmette, Illinois

ALpine 1-0759

CHRISTIE

NICK

**The Evanston Restaurant**

BREAKFAST LUNCH DINNER

COMPLETE CARRY OUT SERVICE

1714 CENTRAL STREET  
EVANSTON, ILLINOIS

TELEPHONE  
GREENLEAF 5-9732

Saville's Flower Shops

Floral Artistry

1712 Sherman 317 Ridge Road

Evanston, Ill. Wilmette, Ill.

... flowers telegraphed  
everywhere

Thompson

Pharmacy

P. I. Thompson, R. Ph. M. L. Thompson, R. Ph.

2000 Central St. Evanston, Ill.

DA. 8-1717

CONGRATULATIONS

on your 1963 edition

from the  
sponsor, editors, and  
staff of

Chaff

Santucci Food Shop

1704 Central Street

Evanston, Illinois

Open Sundays

Evenings until 8:00

We feature Swift's Ice Cream

# LABAHN'S



Stationery ★ Desk and Office Supplies

ADDING MACHINES & TYPEWRITERS  
Rented — Repaired — Bought — Sold

1939 CENTRAL STREET — UN 4-4880  
EVANSTON, ILLINOIS

DAVIS 8-2903

## *Lou's Restaurant*

LOU GELDERMAN

1850 SHERMAN AVE.  
EVANSTON, ILL.

## Evanston Bus Company

1201 Central Street

DAvis 8-1100

## The Motley Crew

Class of 1964

## Chandler's

Four Stores to Serve You

630 Davis St.    Evanston    GR 5-7200

315 Howard St.    Evanston    DA 8-3030

645 Central Ave.    Highland Park    ID 3-0230

512 No. Milwaukee Ave.    Libertyville    EM 2-1991

Compliments of

## Virginia Cleaners and Dyers

1017 Central St.

UNiversity 4-4640

4712 Oakton St.

ORchard 3-3881

We Operate our own Plant

Summer Storage--Repairing

We Call and Deliver

*The Hotel of Distinction*



*Where Graciousness Is a Tradition*

# The Orrington Hotel

*Church Street and Orrington Avenue*

**For Your Convenience—There are 692 Offstreet Parking Spaces Within One Block**

## FOR COURTEOUS SERVICE CALL



**SWIFT TV SALES & SERVICE**

*"The North Shore's Finest Service"*

1016 CENTRAL STREET

EVANSTON, ILLINOIS

PHONES UNiversity 4 3787 — Hillcrest 6 2717



Join us on our  
Annual European Tours  
and Round the World Tours  
  
Your Personal Representative  
For All Forms of Travel

.Airline Tickets

.Tour

.Cruises

.Steamships

.Resorts

.Hotels

## Cousins Tours & Travel, Inc.

DAvis 8-8344

2108 Central St.

- Phones -

BRoadway 3-2344

Evanston, Ill.



The most unusual  
gifts are from...

### THE RED DOOR

1814 Central St., Evanston  
839 Elm Street, Winnetka

### OLYMPIA

Precision Typewriters

Guaranteed for Life!!

"Ask Any Student"

**Russ Brown**

**Office Machines Inc.**

1720 Sherman Ave.      DAVIS 8-2549

YOUR LOVELINESS IS OUR RESPONSIBILITY

*My Fair Lady*

HAIRDRESSERS

DAVIS 8-1770

1710 CENTRAL STREET  
EVANSTON, ILLINOIS

### THE TINT SHOPPE

PROMPT SERVICE —

SHOE REPAIRS —

STUDENTS WELCOME

**1710 Sherman Ave.**

**Golf Rd. & Skokie Hwy., Old Orchard**

**GRGreenleaf 5-6477**

**ORchard 4-4121**

*Mom's*

**Restaurant  
and  
Pizzeria**

2614 GREEN BAY ROAD  
EVANSTON, ILLINOIS

**CARRY-OUT SERVICE**

**CALL**

**UN 9-3477**

complimentary

*Marshall*

PHOTOGRAPHERS

162 N. State St., Chicago 1, Ill.

Anthony J. Communale

STate 2-2462

Compliments

**The Class of 1966**

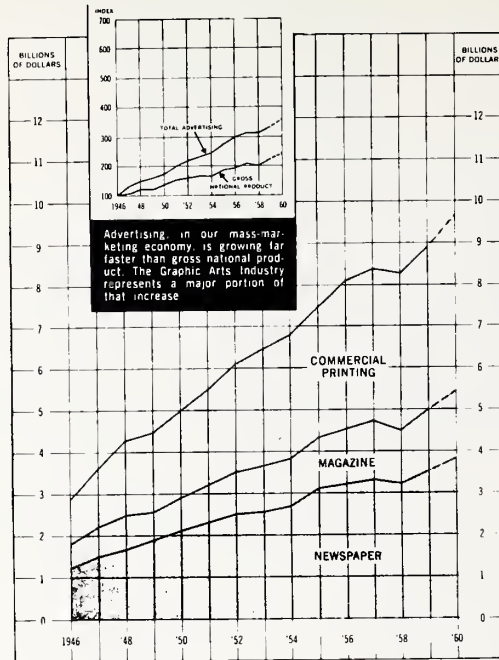
*Meilleurs vœux!*

*Best Wishes!*

*Con Nuestros Mejores Deseos!*

*Viel Gluck!*

**International Club**



## chart your future in this “INDUSTRY OF IDEAS”

The Graphic Arts Industry today is one of the ten largest industries in the United States . . . and still “busting its britches!” We expect to see more technical changes in the next ten years than in the past 500.

This means exciting careers for *you* in this vital business of idea communication . . . where salaries are well above the average pay of industry. Assignments are challenging. Responsibilities interesting. Advancement opportunities unlimited.

For information about career opportunities and scholarships offered by the printing, publishing and allied industries write to:



## EDUCATION COUNCIL

*of The Graphic Arts Industry, Inc.*

5728 Connecticut Avenue, N.W. • Washington 15, D.C.



*Furnished in the interest of vocational information by Artmaster Yearbooks, Inc.  
4700 West 52nd  
Mission, Kansas*

Abrahams, Carol	30	Calder, Elaine	34, 39, 47, 53
Abrams, Lynne	50, 53, 82	Capparelli, Carole	27, 48
Abrew, Carol	34, 42, 54	Castiglioni, Therese	50
A.C.E.	50, 51	CHAFF	43
Adams, Martha	26	Chapman, Fern	35, 46, 47
Alberini, Gail	48, 49, 53, 82	Charla, Ursula	30
Alberts, Marilyn	35, 51, 53	Childs, Shirley	85
Alsover, Marie	30, 51	CHOIR	46
AMBASSADORS	41	Claassen, Joyce	85
Ames, Barbara	26, 46, 48	Clark, Victoria	30
Anderson, Joyce	34, 45	Clayton, Lynn	39, 49, 81, 85
Anderson, Linda	82	Clements, Ida	27
Appleman, Barbara	53, 82	Cody, Gerald	27, 48
ATHLETIC CLUB	55	Cohen, Bari	50, 85
Atkins, William	27	Cohen, Elaine	27
Baker, Peter	28, 31, 38, 41, 54	Cohen, Malvina	46
Barasch, Carolyn Kozlor	83	Cohen, Nancy	85
Baxter, Nancy	4, 42, 48	Colburn, Pamela	32, 35, 44, 51, 52, 54, 55
Becker, Susan	34	Coll, Sherry	41, 86
Beckerman, Carol	34, 45, 46	COLLEGE COUNCIL	38, 39
Belding, Lindsay	26	Conviser, Linda	34
Belzer, Evie	39, 40, 41, 81	Cooperman, Sharen	24, 27
Berger, Lyna	31	Czys, Carol	34, 51
Binder, Madeline	47, 48, 50, 83	Daleo, Suzanne	30, 42, 50
Bjork, Carlotta	83	DANCE GROUP	49
Bodie, Melanie	26	Daniels, Merhi	34, 38, 40, 46, 48, 49
Bogolub, Jean	83	Davies, Carol	35, 47
Bond, Jo Ellen	27	Davies, Jane	26, 53
Borak, Linda	84	De Bella, Maria	4, 34, 39, 42, 46, 47, 50, 53
Bornerman, Janet	27, 43	Deboer, Judith	86
Boroviak, Diane	75, 84	Demas, Lorraine	86
Brauer, Barbara	26, 46	Deming, Nancy	53, 86
Brill, Carol	84	Dempsey, Sue	27
Brockman, Diane	34, 46, 48	Denenholz, Judith	87
Bromurnd, Marylee	26, 46	Desai, Pushpa	52
Brenster, Yolouda	34, 47	Desatnik, Harriet	30
Butterworth, Betty	44, 84	Dienner, Diane	34, 49
Cahn, Carol	26, 48	Dorenberg, Barbara	43

Donkle, Sandra . . . . .	4, 35, 51, 52, 55	Goodman, Marilyn . . . . .	26, 48, 51, 53
DORM ASSOCIATION . . . . .	44	Gorodess, Madelyn . . . . .	50, 89
Dorsey, Gloria . . . . .	24, 26	Gose, Elaine . . . . .	46
DRAMA CLUB . . . . .	48	Graf, Susan . . . . .	26, 46, 51
Dubiel, Mary Anne . . . . .	27	Grant, Bonnie . . . . .	32, 35, 42
Dubsky, Antionette . . . . .	48	Greenberg, Rochelle . . . . .	26, 42
Dudley, Kathleen . . . . .	26	Gregor, Joyce . . . . .	4, 35, 41, 42, 46, 51
Durkin, Suzanne . . . . .	26	Griffiths, Joan . . . . .	32, 35, 39, 51, 53
Dyer, Ann . . . . .	87	Grindly, Sara . . . . .	35, 42, 54
Eggers, Diane . . . . .	53	Grover, Pamela . . . . .	26
Elliott, Frances . . . . .	27, 46, 50	Groves, Crol . . . . .	28, 30, 39, 52
Elliott, Sharen . . . . .	30	Grzybowski, Diane . . . . .	35, 51, 52
Erickson, Joyce . . . . .	34	Haarvig, Karen . . . . .	41, 53, 90
Ewert, Jeannie . . . . .	87	Hahn, Darlene . . . . .	26, 48
Fabri, Kathleen . . . . .	35, 44, 50	Hauchrow, Jean . . . . .	34
Falb, Sharen . . . . .	36	Hannah, Linda . . . . .	26, 46
Farmans, Georgene . . . . .	26	Harloff, Sharen . . . . .	90
Fefferman, Eileen . . . . .	87	Hart, Terrie-Jayne . . . . .	24, 26, 38
Feinberg, Susan . . . . .	34, 40	Hauser, Judith . . . . .	35, 53
Feldberg, Karen Robins . . . . .	87	Hayna, Pamela . . . . .	27, 50, 53
Fisher, Betty . . . . .	47, 88	Heartline, Sally . . . . .	26, 46, 48, 53
Fisher, Ellen . . . . .	26	Hedlin, Caryl . . . . .	47, 53
Fisher, Linda . . . . .	28, 31, 41, 43, 54	Henderson, Andrea . . . . .	48
Fox, Judith . . . . .	88	Hernacki, Joyce . . . . .	4, 34, 42, 54
Freier, Alice . . . . .	31, 53	Herzau, Geri . . . . .	28, 46
FRESHMAN CLASS . . . . .	26, 27	Highstone, Susan . . . . .	46, 51, 81, 90
Frost, Barbara . . . . .	39, 81, 88	Hirota, Karen . . . . .	27, 52
Garfield, M. . . . .	50, 53, 88	Holbrook, Lucia . . . . .	34, 51, 53
Gates, Janet . . . . .	81, 89	Holzgreffe, Ursula . . . . .	40, 90
Gertz, Margery . . . . .	89	Hosein, Juliette . . . . .	39, 45, 52, 75, 91
Gilbert, Geraldine . . . . .	35, 50, 53	Houghton, Denise . . . . .	26
Gill, Barbara . . . . .	27, 46	Houston, Jean . . . . .	51, 52
Gillman, Geraldine . . . . .	50, 53, 89	Huddleston, Betty Lou . . . . .	50, 91
Gilzmer, Carol . . . . .	26, 50, 53	HUMAN RELATIONS . . . . .	53
Giraldi, Carotla . . . . .	34, 47, 50	Hunter Francis . . . . .	30
Gladstone, Trudi . . . . .	90	INTERNATIONAL CLUB . . . . .	52
Goldstein, Sandra . . . . .	26, 89	Jacobson, Phyllis . . . . .	31
Goodman, Elaine . . . . .	27, 42	Jentzen, Leigh . . . . .	34, 38, 52, 55

Johnson, Barbara .....	46	Lewis, Victoria .....	26
Jones, Vivian .....	48	Lieberman, Myrna .....	48, 50, 94
JUNIOR CLASS .....	34, 35	Lillie, Dana .....	26
Kabumoto, Linda .....	26	Lio, Geraldine .....	4, 32, 42, 51
Kahlenberg, Leone .....	91	Lypson, Justine .....	34
Kahn, Norma .....	35, 53	Lissner, Barbara .....	30
Kantor, Cheryl .....	26	Lodeski, Eleanor .....	34, 52
Kaonohi, Patricia .....	34, 39, 44, 50, 52, 54, 55	Loeb, Susan .....	53, 94
KAPPA DELTA PI .....	40	Lombardi, Maria .....	27, 42, 47, 51
Karlin, Joan .....	28, 30, 48, 52	Lotti, Linda .....	28
Karas, Mary .....	38, 40, 41, 44, 50, 52, 72, 92	Lowenfeld, Martha .....	39, 41, 44, 52, 54, 74
Kassmer, Jean .....	30	Mabes, Myra .....	31, 42, 43, 53
Katcher, Anita .....	26	Mac Fate, Mary .....	26, 46
Leipzig, Ellen .....	93	Madson, Geraldine .....	35, 48
Kendall, Helen .....	46	Maglaya, Estrella .....	47, 50, 53, 94
Kennedy, Mary .....	53, 92	Margolis, Marlene .....	35
Kiffman, Gerlinda .....	28, 31, 41	Marrone, Linda .....	27, 42
Kincaid, Marion .....	30, 48, 49	Masengale, Sandra .....	26
Kirkpatrick, Gloriann .....	26, 42, 46, 49, 55	Matavosky, Joan .....	31, 51, 53
Kittsley, Janice .....	26, 47	Mc Carthy, Ann .....	34, 50, 53
Kjeldeen, Patti .....	35, 46, 51, 53	Mc Graw, Emma .....	50, 95
Knight, Ann .....	30, 50, 52	Mc Lean, Sandra .....	28, 30, 46, 48, 52
Knight, Cheryl .....	40, 93	Mc Arthur, Richard .....	27, 48
Kochevsky, Estelle .....	51, 92	Mc Govern, Kathleen .....	24, 26, 38
Korsh, Lesile .....	26	Meadows, Sharon .....	95
Kottler, Joan .....	50, 53, 92	Mehlsak, Joy .....	30, 50, 52
Kree, B. ....	30	Meisenberg, Sharon .....	34
Kreutzig, Karen .....	35, 53	Mensing, Elizabeth .....	24, 26, 46, 48
Kunihisa, Louise .....	30, 52	Metten, Joan .....	35, 50
Lauoff, Linda .....	34	Meyer, Mary .....	31, 44, 46, 50
Laubenheimer, Mary .....	26, 46	M.E.N.C. ....	47
Lee, Helen .....	26, 48, 52	Miller, Barbara .....	46
Lekas, Pauline .....	30	Miller, Sandy .....	24, 27, 51, 95
Leskin, Geire .....	93	Miller, Sharon .....	53
Levine, Devra .....	93	Moon, Marjorie .....	30
Levine, Linda .....	26, 42	Moore, Harriet .....	26, 48
Lewis, Eileen .....	30	Moore, Marilyn .....	46
Lewis, Natalie .....	30, 34, 42, 43, 48, 51, 52	Muccianti, Denise .....	32, 34, 50, 53



Nahin, Lois .....	34	Rea, Diana .....	35, 51, 52
Naiman, Cynthia .....	34	Readeker, Lynda .....	26
Nakamura, Jonni .....	28, 30, 52	Reimer, Mary Lou .....	27
NATIONAL .....	42	Resnick, Karen .....	50, 97
Neimark, Arlene .....	45	Resnick, Myra .....	32, 34, 38, 41, 50, 53
Nelson, Frances .....	30	Rhines, Linda .....	34
Neumann, Marilyn .....	34, 52	Robbin, Arlene .....	40, 75, 97
Oelerich, Phelomene .....	95	Roberts, Janis .....	97
Olser, Gail .....	95	Roe, Anne .....	27
Olson, June .....	35, 51	Roock, Karen .....	31, 51, 53, 55
Obenhaus, Helen .....	34	Rosenberg, Leslie .....	50, 98
Osajda, Pat .....	35	Rosenberg, Pearl .....	34, 51
Osher, Barbara .....	26, 42	Rotdam, B. ....	30
Otten, Karen .....	32, 35, 47	Rueckert, Ann .....	47, 55, 98
Owen, Carolyn .....	35, 48, 51, 52	Ruggles, Alice .....	98
Owens, Mary .....	26, 42, 50	Ruh, Mary Ellen .....	81, 98
Parkhurst, Carolyn .....	35	Ruland, Cheryl .....	31, 51
Pasch, Miriam .....	36, 51, 53	Ruzansky, Susan .....	27, 49
Pawlowski, Carole .....	26, 48	Rydl, Lynn .....	35
PEACE CORP .....	54	Salpeter, Helen .....	35, 54
Pearlman, Sharon .....	30, 53	Sanders, Gail .....	28, 31
Pearson, Beverly .....	4, 30, 43, 50, 53	Sandman, Penny .....	99
Perlman, Judith .....	26	Santucci, Ernestine .....	24, 26
Petrone, Lucia .....	30	Saxon, Iris .....	98
Phillips, Sandra .....	34, 50, 53	Scharf, Barbara .....	31, 41, 43, 51, 53
Pierce, Rosaland .....	26, 48	Schmidt, JoAnne .....	26, 47, 56
Pike, Mary .....	24, 27, 42, 46	Schroeder, Janis .....	27
Pinkus, Diana .....	96	Schwartz, Gail .....	35
Pinto, Sheila .....	96	Schwartz, Vicki .....	99
Plotkin, David .....	48	Schwiederjoll, Dorothy .....	99
Polovina, Georgia .....	31, 39, 41, 43, 46, 51, 53, 54	Sears, Nancy .....	46
Poitrass, Gail .....	35, 51, 53	Seeley, Charlene .....	26, 46
Popielarz, Ruth .....	38, 41, 42, 51, 52, 54, 96	Shapiro, Carol .....	99
Pritikin, Lee .....	96	Sharpe, Eileen .....	40, 46, 49, 100
Radde, Elsie .....	96	Shayman, Barbara .....	35
Ransburg, Mary .....	97	Sheehan, Terrie .....	34, 41, 50, 52
Rapperport, Judith .....	26	Shenfeld, Judy .....	30
Raymond, Lynne .....	34	Sherman, Roberta .....	100

Shorr, Gloria .....	34	Travetto, Darlene .....	32, 34, 51, 53
Sievers, Marilyn .....	34	Tustwuide, Mary .....	30
Silverman, Roberta .....	24, 26	VanHofTen, Adriaantije .....	52
Singer, Sandra .....	51, 100	Vespa, Vicki .....	44, 51, 52, 101
Sitnick, Diane .....	26	Vidmar, Marilyn .....	101
Skoglund, Joyce .....	39, 46	Ward, Marilyn .....	30, 34, 46, 49, 53
Simejkal, Lee .....	26, 42	Warren, Barbara .....	30, 46
Similey, Margaret .....	26, 42, 50	Wasko, Elizabeth .....	32, 35
Smith, L. ....	31	Wastcoat, Wendy .....	24, 27, 38, 46, 52, 53
Smith, Mary Susan .....	34, 46	Watkins, Janet .....	26
Smith, Priscilla .....	31, 51, 53	Wehrli, Nancy .....	41, 48, 50, 53, 81, 101
Snow, Phyllis .....	34, 43, 47, 50, 52	Weil, Kathryn .....	26
Snydacker, Betsy .....	34, 46	Weiner, Virginia .....	40, 102
Synder, Phyllis .....	100	Weinreich, Wendy .....	30, 53
Solway, Barbara .....	32, 35, 47	Weinstein, Gail .....	24, 26, 38
Stafsholt, Mary .....	34	Weiss, JoLee .....	35, 42
Steinberg, Inis .....	34, 47	Weiner, Joan .....	30, 50, 52, 53
Steinert, Dona Marie .....	34	White, Wendy .....	24, 26
Stoltz, Sheryl .....	28, 30, 39, 46, 51, 53	Williams, Katherine .....	26, 42
Strong, Julie .....	26	Willison, Jean .....	42, 50, 55, 81, 102
Stuber, Carol .....	26	Wilson, Margot .....	31, 43, 51, 53
Sullivan, Kathy .....	31	Wittkes, Barbar .....	30
Sundstrom, Dana .....	24, 26, 46, 51, 52, 53	Wolfman, Harriet .....	49, 51, 102
Super, Joan .....	26, 42, 46, 47, 51	Wortham, Carol .....	34, 53
Tavai, Iutita .....	28, 30, 50, 52, 54	Wright, Martha Jane .....	34
Terry, Elizabeth .....	26	Wrobel, Margaret .....	30
Thuy, Patricia .....	101	Youngs, Judith .....	46
Tillisih, Dagmar .....	26	Youssi, Sharon .....	102
Tinghino, Virginia .....	53	Zabel, Lynn .....	26, 53
Tirman, Jacquelyn .....	27	Zelmar, Fern .....	43, 47, 48, 51, 102
Tobor, Joyce .....	36	Zlotnick, Marianne .....	32, 35, 51
TOWN ASSOCIATION .....	45	Zwilling, Lynn .....	26

# ACKNOWLEDGEMENTS

Our sincere thanks and appreciation go to these people, who have helped to make this yearbook a reality:

Lt. Col. R. J. Johnson, CAP, Executive Officer, Civil Air Patrol, Auxiliary United States Air Force, an aereo space expert who was the source of our technical information and an invaluable assistant to the art and literary editors in depicting our theme;

Mrs. Pauline Galvarro, sponsor and adviser, whose patience and guidance have been instrumental in the production of this yearbook;

Mr. Joseph Vogel, representative of Artmaster Yearbook Company, who taught and advised us in the making of our yearbook; and helped us through the maze of technical details;

Mr. Anthony Communale, of Marshal Studios, whose cooperation in taking and printing our photographs contributed so much to our yearbook;

Our faithful staff who worked so diligently with editors in composing this yearbook;

The college faculty, who have shown much interest and given valuable assistance to the yearbook staff;

Our fellow students, who have supported us by working with staff members on various sections of the yearbook.









*Artmaster Yearbooks, Inc.*

